

Jan - June 2014

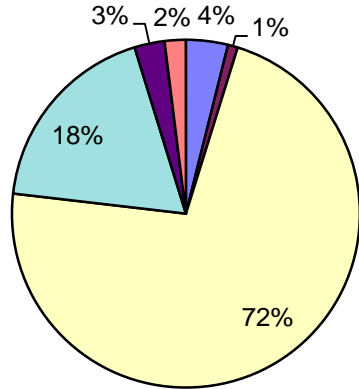
NH CORE Energy Efficiency Program - 2014 Expenditures

(see Note 1)

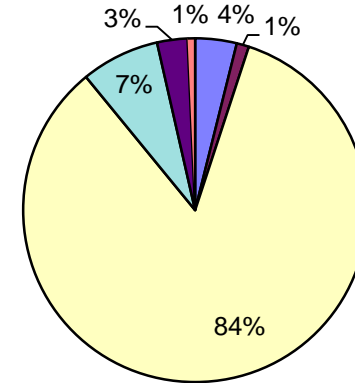
	<u>Internal Adm</u>	<u>External Adm</u>	<u>Cust Rebts/Services</u>	<u>Internal Impl.</u>	<u>Marketing</u>	<u>Evaluation</u>	<u>Total</u>
ENERGY STAR Homes	\$ 24,307	\$ 534	\$ 225,555	\$ 89,322	\$ 7,415	\$ 5,874	\$ 353,006
Liberty Utilities	1,154	-	2,152	1,534	602	575	6,018
NHEC	1,200	110	11,642	15,289	194	167	28,603
PSNH	17,174	-	178,552	62,726	4,863	4,783	268,098
Unitil	4,778	424	33,209	9,772	1,756	349	50,287
Home Performance w/Energy Star	\$ 49,858	\$ 11,878	\$ 922,421	\$ 235,561	\$ 35,822	\$ 25,220	\$ 1,280,759
Liberty Utilities	257	-	69,284	13,458	355	1,150	84,503
NHEC	3,800	1,595	47,141	28,593	614	1,581	83,325
PSNH	38,577	56	720,014	169,879	31,256	22,140	981,922
Unitil	7,224	10,227	85,982	23,631	3,597	349	131,009
Energy Star Appliances	\$ 51,451	\$ 15,367	\$ 1,109,742	\$ 97,267	\$ 37,736	\$ 9,291	\$ 1,320,854
Liberty Utilities	1,888	-	21,200	5,087	5,298	1,722	35,195
NHEC	8,318	763	125,655	24,174	2,871	1,155	162,935
PSNH	33,441	-	910,339	47,576	24,224	5,884	1,021,463
Unitil	7,804	14,604	52,548	20,430	5,343	530	101,260
Home Energy Assistance	\$ 79,700	\$ 11,320	\$ 1,733,142	\$ 157,034	\$ 5,144	\$ 28,139	\$ 2,014,479
Liberty Utilities	1,183	-	99,414	6,809	212	2,867	110,484
NHEC	15,524	1,753	237,853	41,198	2,509	3,209	302,047
PSNH	50,511	-	1,309,136	77,233	970	21,278	1,459,128
Unitil	12,482	9,567	86,739	31,795	1,453	785	142,820
ENERGY STAR Lighting	\$ 29,441	\$ 19,650	\$ 1,067,946	\$ 99,131	\$ 209,361	\$ 6,295	\$ 1,431,824
Liberty Utilities	220	-	51,298	1,602	16,716	1,146	70,981
NHEC	6,141	563	86,902	26,043	3,726	853	124,226
PSNH	16,366	-	871,892	52,901	180,459	3,905	1,125,522
Unitil	6,715	19,087	57,854	18,586	8,461	392	111,095
Other Residential Programs	\$ 9,910	\$ 3,933	\$ 103,476	\$ 46,992	\$ 3	\$ 2,013	\$ 166,327
Liberty Utilities	-	-	-	-	-	-	-
NHEC	19	2	0	664	3	3	691
PSNH	9,429	-	103,476	43,712	-	2,010	158,627
Unitil (Home Energy Suite)	462	3,931	-	2,616	-	-	7,009
Total Residential Programs	\$244,667	\$62,682	\$5,162,282	\$725,306	\$295,480	\$76,831	\$6,567,249
Large Business Energy Solutions	\$ 118,741	\$ 45,647	\$ 1,533,957	\$ 473,132	\$ 34,300	\$ 37,425	\$ 2,243,201
Liberty Utilities	5,443	-	69,079	39,622	10,484	5,737	130,365
NHEC	4,260	391	62,345	19,910	952	948	88,806
PSNH	93,950	-	1,149,547	377,854	16,859	26,884	1,665,095
Unitil	15,088	45,256	252,985	35,746	6,004	3,856	358,935
Small Business Energy Solutions	\$ 63,712	\$ 2,376	\$ 1,170,921	\$ 363,654	\$ 52,352	\$ 22,501	\$ 1,675,516
Liberty Utilities	3,217	-	66,473	9,924	16,425	3,050	99,088
NHEC	6,891	632	89,676	54,817	1,541	1,533	155,089
PSNH	42,698	-	744,182	273,884	32,426	15,719	1,108,910
Unitil	10,906	1,745	270,590	25,029	1,961	2,199	312,429
Municipal Program	\$ 29,859	\$ 365	\$ 317,683	\$ 29,606	\$ 1,311	\$ 1,833	\$ 380,656
Liberty Utilities	8	-	1,415	2	1,015	1,029	3,469
NHEC	515	47	4,124	9,423	115	115	14,339
PSNH	25,895	-	258,012	13,660	113	184	297,864
Unitil	3,441	318	54,131	6,521	68	505	64,983
Other C&I Programs	\$ 10,203	\$ 469	\$ 88,196	\$ 43,482	\$ 10,877	\$ 2,576	\$ 155,803
Liberty Utilities	-	-	370	178	-	-	548
NHEC	404	37	5,714	2,264	90	90	8,599
PSNH (Education, RFP, Smart Start)	9,799	-	82,111	41,040	10,787	2,487	146,224
Unitil (Education, C&I Energy Suite)	-	432	-	-	-	-	432
Total Non-Residential Programs	\$222,514	\$48,858	\$3,110,756	\$909,875	\$98,839	\$64,335	\$4,455,177
TOTAL (Both Sectors)	\$467,181	\$111,539	\$8,273,039	\$1,635,181	\$394,319	\$141,167	\$11,022,426

Note 1: Evaluation amounts are based on 5% of total budgets. Actual program expenses will vary from numbers shown.

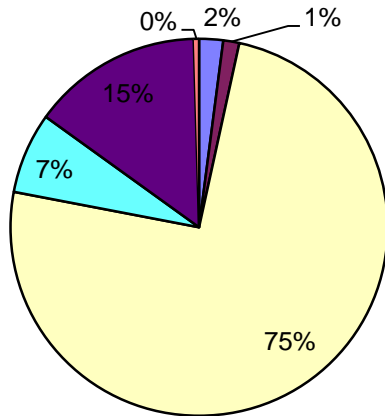
Home Performance w/Energy Star



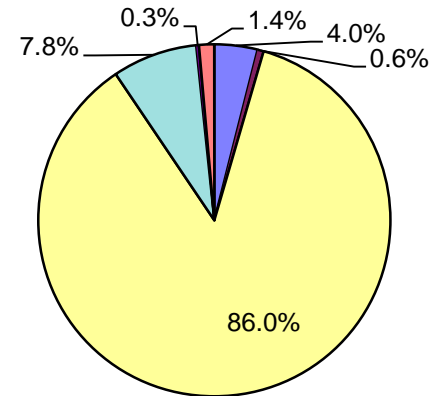
Energy Star Appliances



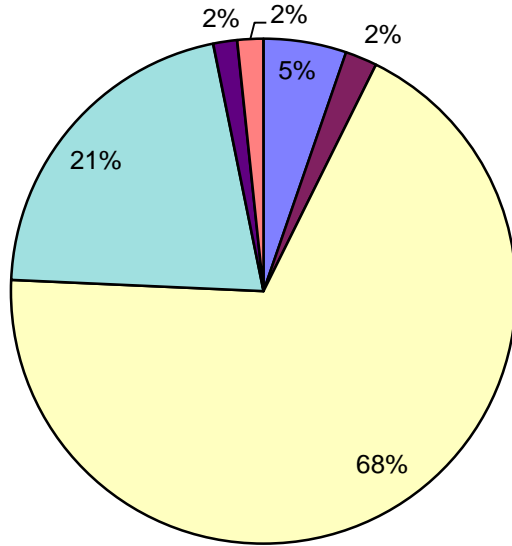
Energy Star Lighting



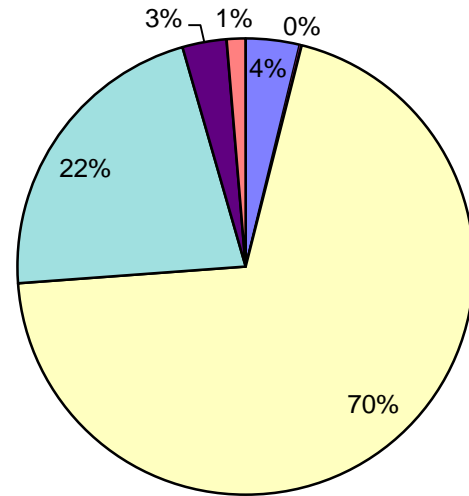
Home Energy Assistance



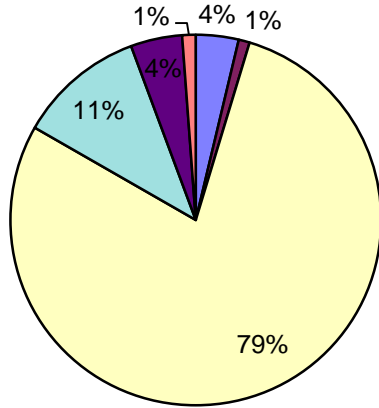
Large Business Energy Solutions



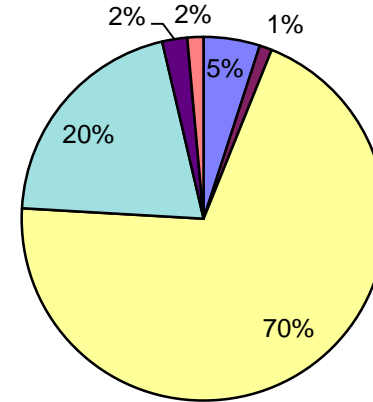
Small Business Energy Solutions



Total Residential Programs



Total Non-Residential Programs



Total Residential and Non-Residential Programs

