

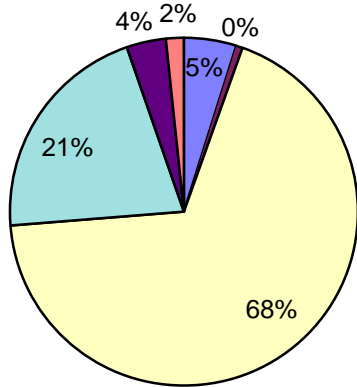
Jan-Mar 2014

NH CORE Energy Efficiency Program - 2014 Expenditures

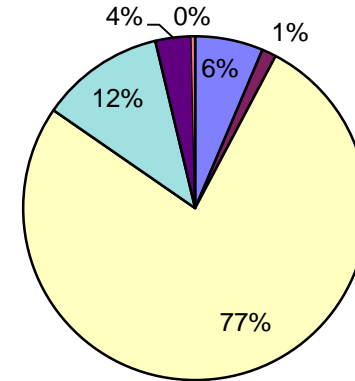
		(see Note 1)						
		<u>Internal Adm</u>	<u>External Adm</u>	<u>Cust Rebts/Services</u>	<u>Internal Impl.</u>	<u>Marketing</u>	<u>Evaluation</u>	<u>Total</u>
ENERGY STAR Homes		\$ 12,334	\$ 454	\$ 81,927	\$ 42,986	\$ 1,117	\$ 1,202	\$ 140,020
	Liberty Utilities	175	-	52	1,142	22	6	1,397
	NHEC	766	114	5,155	10,488	201	16	16,739
	PSNH	9,164		72,394	26,270	705	972	109,506
	Unitil	2,229	340	4,326	5,086	189	208	12,378
Home Performance w/Energy Star		\$ 25,646	\$ 3,211	\$ 359,421	\$ 110,367	\$ 19,307	\$ 8,701	\$ 526,654
	Liberty Utilities	65	-	25,274	7,425	40	11	32,816
	NHEC	1,290	191	12,816	11,217	339	448	26,302
	PSNH	20,894	28	296,037	80,025	18,655	8,034	423,673
	Unitil	3,397	2,992	25,294	11,700	273	208	43,864
Energy Star Appliances		\$ 25,392	\$ 5,300	\$ 305,114	\$ 46,192	\$ 13,524	\$ 1,281	\$ 396,804
	Liberty Utilities	1,102	-	120	2,055	1,744	13	5,034
	NHEC	2,430	360	31,301	10,742	890	50	45,774
	PSNH	18,050		263,643	22,182	10,418	880	315,173
	Unitil	3,810	4,940	10,050	11,212	473	337	30,822
Home Energy Assistance		\$ 38,705	\$ 2,705	\$ 647,333	\$ 79,400	\$ 1,253	\$ 8,800	\$ 778,195
	Liberty Utilities	637	-	20,346	5,153	12	19	26,167
	NHEC	4,719	700	64,443	14,836	1,241	519	86,458
	PSNH	26,954		549,669	40,155		7,793	624,570
	Unitil	6,395	2,005	12,875	19,255	0	469	40,999
ENERGY STAR Lighting		\$ 15,803	\$ 6,995	\$ 553,443	\$ 50,643	\$ 179,145	\$ 1,472	\$ 807,501
	Liberty Utilities	34	-	442	852	5,040	7	6,374
	NHEC	3,647	541	49,087	11,244	2,132	76	66,726
	PSNH	8,733		486,820	27,831	167,412	1,155	691,952
	Unitil	3,390	6,454	17,094	10,717	4,561	234	42,450
Other Residential Programs		\$ 5,281	\$ 3,156	\$ 30,200	\$ 31,754	\$ 5	\$ 949	\$ 71,345
	Liberty Utilities		-		-			-
	NHEC	21	3	-	535	5	0	564
	PSNH	5,031		30,200	29,922		949	66,102
	Unitil (Home Energy Suite)	229	3,153		1,297			4,679
Total Residential Programs		\$ 123,162	\$ 21,821	\$ 1,977,438	\$ 361,341	\$ 214,352	\$ 22,405	\$ 2,720,520
Large Business Energy Solutions		\$ 63,435	\$ 24,497	\$ 468,978	\$ 259,405	\$ 21,271	\$ 6,406	\$ 843,993
	Liberty Utilities	2,832	-	21,974	20,690	6,458	42	51,995
	NHEC	2,804	416	38,167	9,922	1,132	58	52,499
	PSNH	50,134		262,071	207,054	13,492	3,848	536,599
	Unitil	7,666	24,081	146,766	21,740	189	2,458	202,900
Small Business Energy Solutions		\$ 31,267	\$ 1,856	\$ 432,883	\$ 176,245	\$ 36,280	\$ 5,205	\$ 683,735
	Liberty Utilities	1,978	-	19,901	5,181	4,724	22	31,806
	NHEC	1,976	293	18,413	20,775	798	41	42,296
	PSNH	22,785		258,952	140,675	29,215	3,729	455,357
	Unitil	4,527	1,563	135,617	9,615	1,542	1,413	154,277
Municipal Program		\$ 15,792	\$ 311	\$ 60,401	\$ 7,233	\$ 1,117	\$ 174	\$ 85,028
	Liberty Utilities	-	-	90	-	851	10	951
	NHEC	378	56	3,598	3,847	153	8	8,040
	PSNH	13,818		53,144		113		67,075
	Unitil	1,596	255	3,569	3,386		156	8,962
Other C&I Programs		\$ 5,377	\$ 22	\$ 6,113	\$ 18,666	\$ 3,555	\$ 689	\$ 34,421
	Liberty Utilities	-	-					-
	NHEC	148	22	1,803	857	60	3	2,893
	PSNH (Education, RFP, Smart Start)	5,229		4,310	17,808	3,495	686	31,529
	Unitil (Education, C&I Energy Suite)							-
Total Non-Residential Programs		\$ 115,871	\$ 26,686	\$ 968,375	\$ 461,549	\$ 62,222	\$ 12,475	\$ 1,647,178
TOTAL (Both Sectors)		\$ 239,033	\$ 48,507	\$ 2,945,813	\$ 822,891	\$ 276,574	\$ 34,879	\$ 4,367,697

Note 1: Evaluation amounts are based on 5% of total budgets. Actual program expenses will vary from numbers shown.

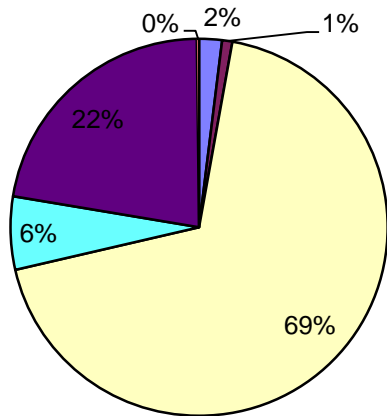
Home Performance w/Energy Star



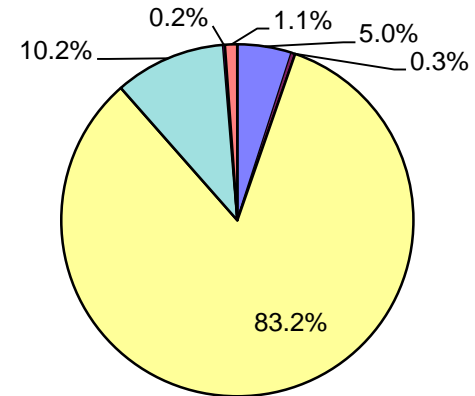
Energy Star Appliances



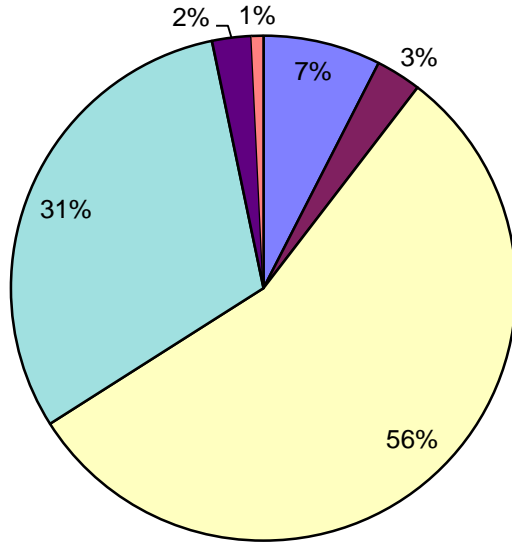
Energy Star Lighting



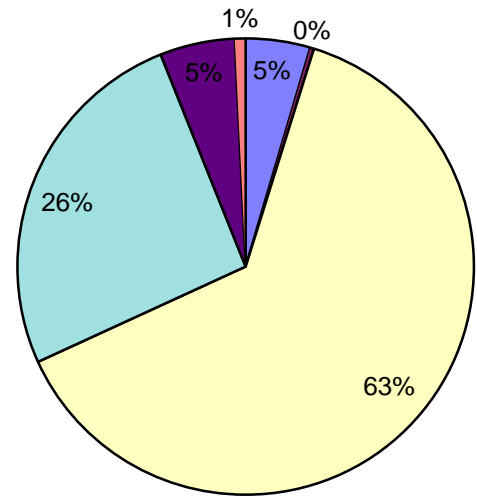
Home Energy Assistance



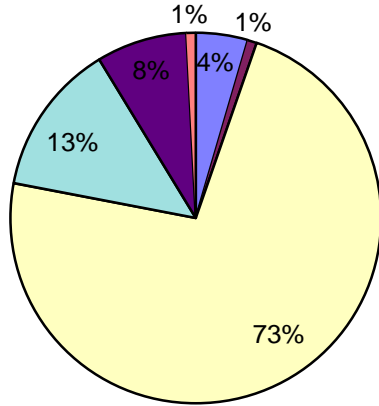
Large Business Energy Solutions



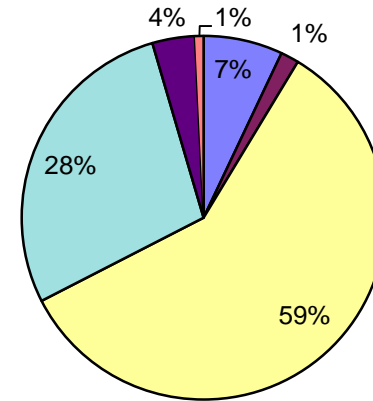
Small Business Energy Solutions



Total Residential Programs



Total Non-Residential Programs



Total Residential and Non-Residential Programs

