

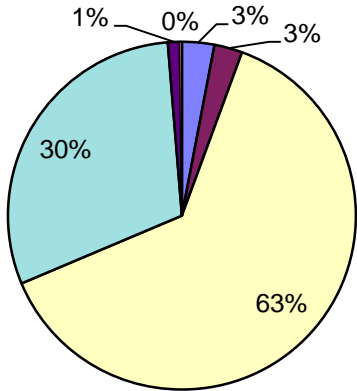
Jan-Mar 2014

NH CORE Energy Efficiency Program - 2014 Expenditures - GAS

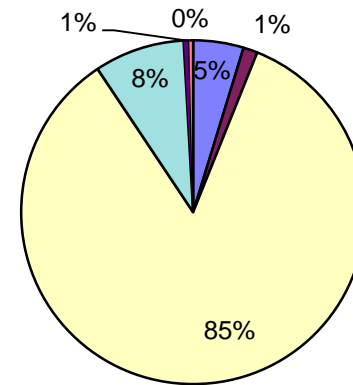
	(see Note 1)						
	<u>Internal Adm</u>	<u>External Adm</u>	<u>Cust Rebts/Services</u>	<u>Internal Impl.</u>	<u>Marketing</u>	<u>Evaluation</u>	<u>Total</u>
ENERGY STAR Homes	\$ 1,570	\$ 293	\$ 6,393	\$ 8,169	\$ 585	\$ 125	\$ 17,135
Liberty Gas	466	-	4,109	5,723	392	6	10,696
Unitil Gas	1,104	293	2,284	2,446	193	119	6,439
Home Performance w/Energy Star	\$ 2,695	\$ 2,359	\$ 56,606	\$ 27,019	\$ 1,006	\$ 165	\$ 89,850
Liberty Gas	1,229	-	37,649	22,518	728	46	62,170
Unitil Gas	1,466	2,359	18,957	4,501	278	119	27,680
Energy Star Appliances	\$ 6,230	\$ 1,757	\$ 111,350	\$ 11,164	\$ 691	\$ 470	\$ 131,662
Liberty Gas	2,919	-	63,675	6,007	305	46	72,952
Unitil Gas	3,311	1,757	47,675	5,157	386	424	58,710
Home Energy Assistance	\$ 5,496	\$ 1,082	\$ 228,309	\$ 19,130	\$ 27	\$ 344	\$ 254,388
Liberty Gas	2,647	-	228,309	12,237	27	56	243,276
Unitil Gas	2,849	1,082	-	6,893	-	288	11,112
Other Residential Programs	\$ -	\$ 1,286	\$ 419	\$ (26)	\$ 39	\$ (10)	\$ 1,708
Liberty Gas	-	-	419	(26)	39	(10)	422
Unitil Gas (Home Energy Suite)	-	1,286	-	-	-	-	1,286
<u>Total Residential Programs</u>	\$ 15,992	\$ 6,777	\$ 403,078	\$ 65,455	\$ 2,348	\$ 1,094	\$ 494,743
Large Business Energy Solutions	\$ 11,691	\$ 6,428	\$ 242,309	\$ 27,313	\$ 3,088	\$ 1,343	\$ 292,172
Liberty Gas	7,329	-	240,859	15,650	2,895	200	266,933
Unitil Gas	4,362	6,428	1,450	11,663	193	1,143	25,239
Small Business Energy Solutions	\$ 9,652	\$ 838	\$ 129,208	\$ 34,492	\$ 4,526	\$ 400	\$ 179,116
Liberty Gas	6,737	-	124,684	28,853	4,526	60	164,860
Unitil Gas	2,915	838	4,524	5,639	-	340	14,256
Other C&I Programs	\$ 90	\$ -	\$ -	\$ (90)	\$ -	\$ -	\$ -
Liberty Gas	90	-	-	(90)	-	-	-
Unitil Gas	-	-	-	-	-	-	-
<u>Total Non-Residential Programs</u>	\$ 21,433	\$ 7,266	\$ 371,517	\$ 61,715	\$ 7,614	\$ 1,743	\$ 471,288
TOTAL (Both Sectors)	\$ 37,425	\$ 14,043	\$ 774,595	\$ 127,170	\$ 9,962	\$ 2,837	\$ 966,031

Note 1: Evaluation amounts are based on 5% of total budgets. Actual program expenses will vary from numbers shown.

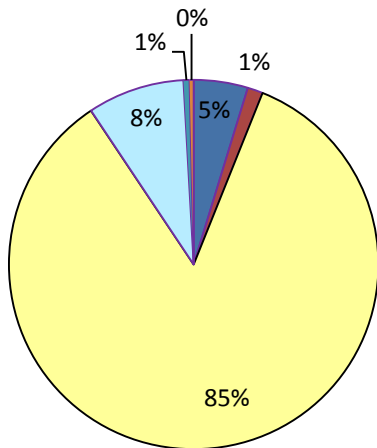
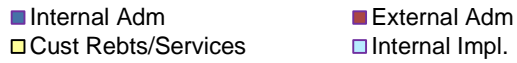
Home Performance w/Energy Star



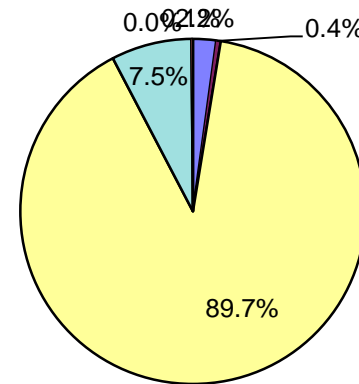
Energy Star Appliances



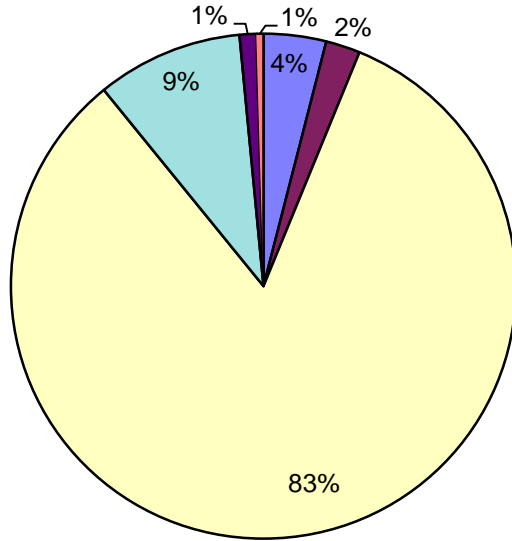
Energy Star Lighting



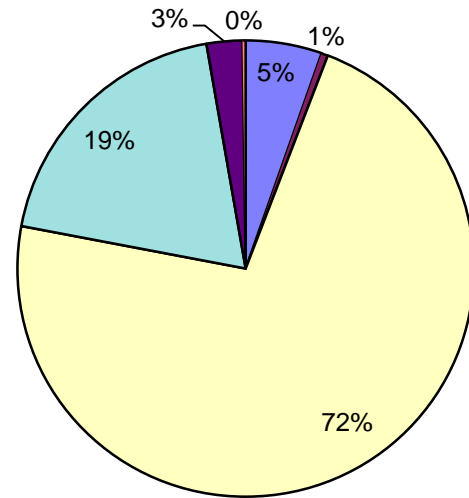
Home Energy Assistance



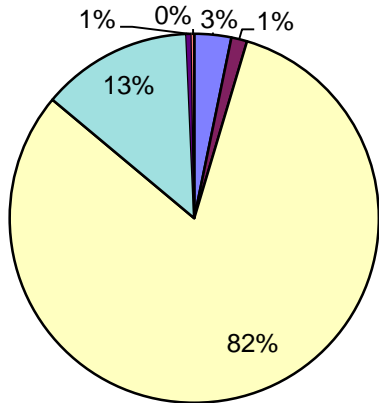
Large Business Energy Solutions



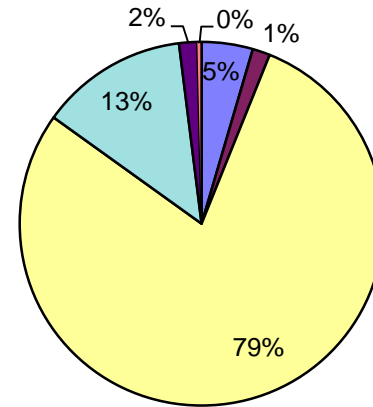
Small Business Energy Solutions



Total Residential Programs



Total Non-Residential Programs



Total Residential and Non-Residential Programs

