

Granite State Electric Company
d/b/a Liberty Utilities
Storm Fund Report for Calendar Year 2012

May 31, 2013

**Granite State Electric Company
d/b/a Liberty Utilities
Annual Storm Fund Report
Calendar Year 2012**

1. Introduction

Granite State Electric Company d/b/a Liberty Utilities (“Liberty Utilities” or “Company”) is submitting the following Annual Storm Fund Recovery Report for 2012, in compliance with the requirements set forth in Exhibit GSE-7 of the Company’s Rate Plan Settlement in Docket No. DG 06-107. This report addresses the requirements found in § 5 of Exhibit GSE-7, namely: (1) provide a description of the storm; (2) provide a summary of the extent of the damage to the distribution system, including the number of outages and length of outages; (3) detail the collections credited to the storm fund; and (4) provide the details of any qualifying storm costs that were charged to the fund during the preceding calendar year. Effective July 3, 2012, Granite State Electric was acquired by Liberty Utilities from National Grid. Consequently, details related to the Storm Fund calculation and supporting information have been provided by National Grid for the pre-July 3, 2012 period and by Liberty Utilities for period July 3, 2012 and beyond.

In 2012, there was one qualifying “major storm,” which was the Hurricane Sandy storm (“Hurricane Sandy”) that occurred on October 29, 2012. Hurricane Sandy affected approximately 13,142 customers, causing interruptions in 14 of the 21 New Hampshire communities served by the Company. Although the storm created significant interruptions in the Company’s service territory, all customers were restored by October 31, 2012. In addition, as reflected in this report, the Company incurred additional charges in 2012 related to the August 2011 Hurricane Irene storm event and the October 29, 2011 snow storm which occurred while Granite State Electric was owned by National Grid.

2. Annual Report of Storm Fund Activity

Attachment 1 reflects a preliminary report of the annual storm fund activity, pending final accounting of storm costs incurred during the calendar year period. This report shows the opening balance of the storm fund, monthly collections, including those in base rates and the Storm Recovery Adjustment Factor, monthly interest applied, preliminary qualifying storm costs charged to the storm fund, and the closing balance of the storm fund.

Attachment 2 represents the monthly detail of the preliminary storm-related charges applied to the storm fund during calendar year 2012 by individual storm event. Detailed descriptions and costs related to these qualifying storm fund storm events are provided in Attachments 3 through 5, as listed below.

Attachment 3: Tropical Storm Irene – August 2011

Attachment 4: Snow Storm – October 2011

Attachment 5: Hurricane Sandy – October 2012

**Granite State Electric Company 3/
d/b/a Liberty Utilities**

Annual Report of Storm Fund Activity
For the Year Ended December 31, 2012

Line	Month	Beginning Balance (a)	Base Rate Contribution (b)	SRA Factor Contribution 1/ (c)	Monthly Interest (d)	Storm Charges 2/ (e)	Ending Balance (f)
1	January-12	\$ (6,722,965)	\$ 10,000	\$ 92,788	\$ (18,809)	\$ (546,433)	\$ (7,185,420)
2	February	(7,185,420)	10,000	159,935	(19,399)	(124,791)	(7,159,675)
3	March	(7,159,675)	10,000	168,658	(18,779)	272,837	(6,726,959)
4	April	(6,726,959)	10,000	149,823	(18,003)	(581)	(6,585,719)
5	May	(6,585,719)	10,000	152,144	(17,617)	-	(6,441,192)
6	June	(6,441,192)	10,000	167,195	(17,231)	(19,079)	(6,300,307)
7	July	(6,300,307)	10,000	182,187	(16,803)	-	(6,124,923)
8	August	(6,124,923)	10,000	212,681	(16,287)	-	(5,918,529)
9	September	(5,918,529)	10,000	190,412	(15,758)	-	(5,733,876)
10	October	(5,733,876)	10,000	147,464	(15,677)	(266,670)	(5,858,758)
11	November	(5,858,758)	10,000	158,734	(15,879)	(177,496)	(5,883,399)
12	December	(5,883,399)	10,000	166,694	(17,299)	(1,184,286)	(6,908,290)
13	Year Ended 12/31/12	\$ (6,722,965)	\$ 120,000	\$ 1,948,715	\$ (207,541)	\$ (2,046,499)	\$ (6,908,290)

- Per Commission Order in DE 11-221, the SRA factor increases from \$0.00040 per kilowatt hour (kWh) to \$0.00223 per kWh for a period of five years from January 1, 2012 through December 31, 2016. Effective with service rendered on and after January 1, 2017, the SRA Factor be reduced to \$0.00127 per kWh
- 2/ See Attachment 2
- 3/ Effective July 3, 2012, Granite State Electric was acquired by Liberty Utilities from National Grid. Consequently, details related to the Storm Fund calculation and supporting information have been provided by National Grid for the pre-July 3, 2012 period and by Liberty Utilities for period July 3, 2012 and beyond.

Granite State Electric Company
d/b/a Liberty Utilities
Annual Report of Storm Fund Activity
For the Year Ended December 31, 2012

Line	Month	Tropical Storm Irene August-11 Storm Event (a)	Snow Storm October-11 Storm Event (b)	Hurricane Sandy October-12 Storm Event (c)	Total (d)
1	January-12	\$ 43,869	\$ 502,564	\$ -	\$ 546,433
2	February	35,151	89,640		124,791
3	March	(192,281)	(80,556)		(272,837)
4	April		581		581
5	May				-
6	June	19,079			19,079
7	July				-
8	August				-
9	September				-
10	October			266,670	266,670
11	November			177,496	177,496
12	December			1,184,286	1,184,286
13	Year Ended 12/31/12	\$ (94,182)	\$ 512,229	\$ 1,628,452	\$ 2,046,499

**Granite State Electric Company
d/b/a Liberty Utilities
Annual Storm Fund Report
Tropical Storm Irene – August 28, 2011**

The Company is providing the following description of the August 28, 2011 Tropical Storm Irene storm event as Attachment 3 to its Annual Storm Fund Report for calendar year 2012 activity. Per the operational reporting requirements found in § 5 of Exhibit GSE-7 of the Company's Rate Plan Settlement in Docket No. DG 06-107, this Attachment will: (1) provide a description of the storm and (2) provide a summary of the extent of the damage to the distribution system, including the number of outages and length of outages. It should be noted that the August 28, 2011 Tropical Storm Irene storm event occurred while Granite State Electric Company was owned by National Grid. This report and the accompanying Exhibits have therefore been prepared by National Grid.

1. Description of the Storm

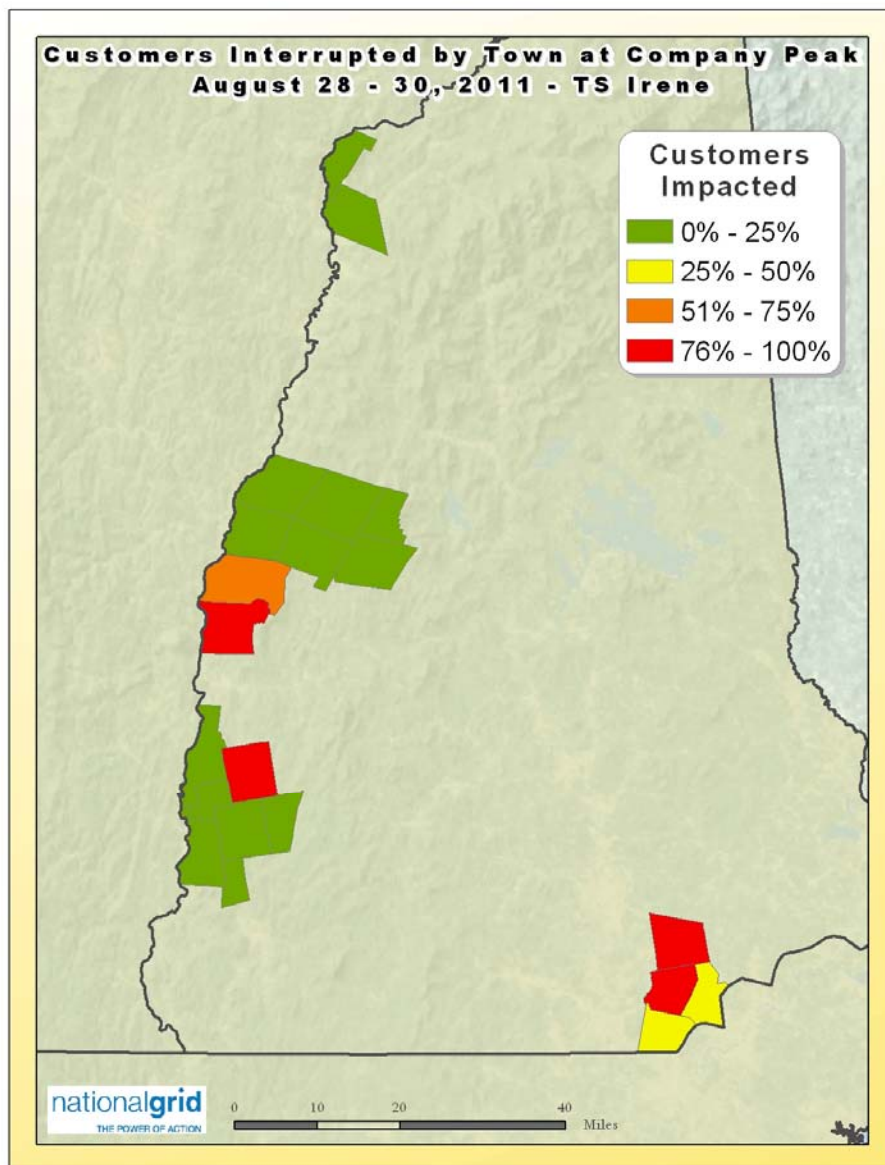
In the normal course of managing system operations, National Grid continually monitors the weather. On August 23, 2011 when it became apparent that there was a risk of a hurricane coming to New England, National Grid began planning for Irene's impact. Leadership analyzed storm plans and reviewed preparedness with suppliers and employees in anticipation of the storm. Formal reviews of hurricane preparation checklists were undertaken to ensure National Grid was positioned to protect public safety, properly assess damage, and restore power as safely and efficiently as possible. This phase of emergency preparedness is referred to as the Anticipation Phase. During this phase, weather forecasts for New England predicted that a strong or low category 1 hurricane would take a very wide path through the region with the center going over the Berkshire Mountains in Massachusetts.

Hurricane Irene moved up the eastern seaboard on the United States during the week of August 22nd causing an estimated \$7 billion in damages and interrupting electric service to over 6 million customers. Irene impacted New England on August 28th as a strong tropical storm, bringing strong winds and significant rainfall.

2. **Summary of the Extent of the Storm Damage**

Due to the severe wind and downed trees, a number of National Grid's customers were without power from Sunday, August 28, 2011 until Wednesday, August 30, 2011. See Figure 1 for peak outages by town.

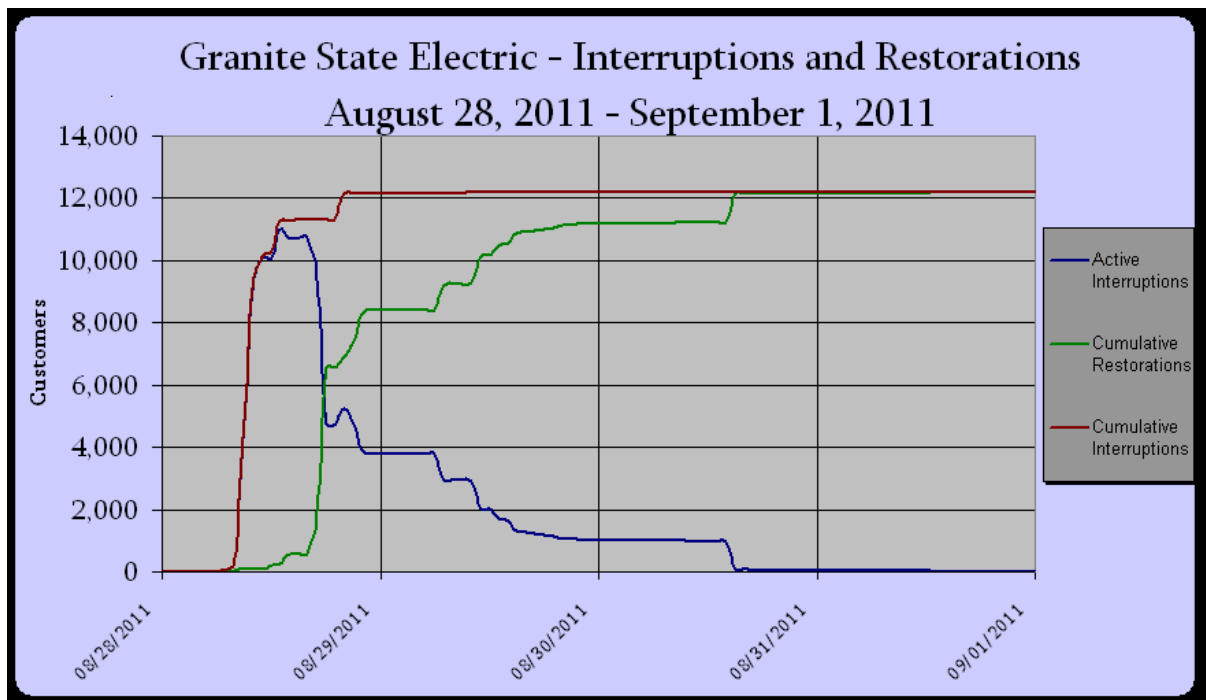
Figure 1
Tropical Storm Irene
Customers Impacted



At the peak, on August 28, 2011, approximately 11,400 customers were interrupted. In response to these peak outages, crews for New Hampshire were comprised of eight internal distribution line crews and a peak of 24 contractor crews. All of the 24 contractor crews were mobilized by the morning of August 29th. For tree crews, National Grid mobilized a peak of 19 contractor tree crews. On August 28th, seven tree crews were working in New Hampshire. By the morning of August 29th, the total number of tree crews had increased to 19. In addition to utilizing National Grid employees, National Grid mobilized a total of 5 wires down personnel.

Ninety percent (90%) of those peak customers were restored by August 29th, at approximately 11 a.m. All remaining customers were restored by August 30th. A total of approximately 15,300 of National Grid’s customers were impacted at different times over the course of the Tropical Storm Irene storm event as shown in Figure 2, which reflects the cumulative interruptions and restorations experienced by customers throughout the event.

Figure 2
Tropical Storm Irene
Customers Without Power



In all, National Grid experienced 128 events, with approximately 15,300 total customers interrupted during the August 28, 2011 storm. See Exhibit 1, attached to this document, which is a table that details the event log for the storm and observed damage to National Grid’s distribution system by feeder.

After the storm, National Grid reviewed the interruption data stored in the Interruption and Disturbance System. National Grid determined that the August 28, 2011 Tropical Storm Irene event qualified as a major storm based on the criteria established in National Grid's Storm Contingency Fund as approved by the New Hampshire Public Utilities Commission.

Date	Troubles (Events)	Customers Interrupted	Customer Minutes Interrupted	Major Storm Qualification
08/28/2011	90	14,690	6,791,557	>45 Events
08/29/2011	37	654	231,244	----
08/30/2011	1	1	41	----

3. Details of Qualifying Costs Charged to the Storm Fund in 2012

Attachment 3: Exhibit 2 details the preliminary costs associated with the August 28, 2011 Tropical Storm Irene storm event charged to the storm fund during calendar year 2012.

**Granite State Electric Company
d/b/a Liberty Utilities
Annual Storm Fund Report
Tropical Storm Irene – August 28, 2011**

Exhibit 1 is a table that details the event log for the August 28, 2011 Tropical Storm Irene storm event and observed damage to National Grid’s distribution system by feeder.

Event Log

Event ID	Feeder(s)	Time Off	Weather	Cause	Classification	CI	Duration
7650108	42-14L1	08/28/2011 07:04	Rain - heavy	Tree - Broken Limb	Fused branch - overhead	20	80
7635509	42-14L1	08/28/2011 07:08	Rain - heavy	Animal	Fused branch - overhead	49	112
7628847	42-14L1	08/28/2011 07:12	Rain - heavy	Tree - Broken Limb	Transformer	2	77
7635510	42-14L2	08/28/2011 07:14	Rain - heavy	Tree Fell	Transformer	1	2,131
7650105	43-12L1	08/28/2011 07:39	Rain - heavy	Tree Fell	Fused branch - overhead	16	92
7628989	42-13L3	08/28/2011 08:20	Rain - heavy	Tree - Broken Limb	Fused branch - overhead	111	87
7635337	42-14L2	08/28/2011 08:54	Rain - heavy	Tree Fell	Secondary/Service - overhead	1	2,924
7650538	42-14L2	08/28/2011 08:56	Rain - heavy	Tree - Broken Limb	Fused branch - overhead	75	1,669
7650321	42-13L3	08/28/2011 09:19	Rain - heavy	Tree - Broken Limb	Main line - overhead	647	230
7631478	42-14L1	08/28/2011 09:22	Rain - heavy	Tree Fell	Fused branch - overhead	26	1,843
7650354	42-13L2	08/28/2011 09:53	Rain - heavy	Tree Fell	Main line - overhead	392	835
7650559	42-14L1	08/28/2011 10:03	Rain - heavy	Tree - Broken Limb	Fused branch - overhead	43	1,657
7650299	43-12L1	08/28/2011 10:13	Rain - heavy	Tree Fell	Fused branch - overhead	150	182
7635317	42-9L3	08/28/2011 10:17	Rain - heavy	Tree Fell	Fused branch - overhead	79	1,754
7635315	42-9L3	08/28/2011 10:24	Rain - heavy	Tree - Broken Limb	Fused branch - overhead	130	575
7643153	42-14L3	08/28/2011 10:28	Rain - heavy	Tree Fell	Fused branch - overhead	114	1,352
7630109	42-14L3	08/28/2011 10:29	Rain - heavy	Tree Fell	Fused branch - overhead	78	479
7650278	41-6L2	08/28/2011 10:31	Rain - heavy	Tree - Broken Limb	Secondary/Service - overhead	1	77
7650352	42-13L1	08/28/2011	Rain - heavy	Tree Fell	Main line - overhead		

Event ID	Feeder(s)	Time Off	Weather	Cause	Classification	CI	Duration
		10:33				2,094	455
7635320	42-14L2	08/28/2011 10:34	Rain - heavy	Tree Fell	Secondary/Service - overhead	1	2,762
7650513	42-14L2	08/28/2011 10:34	Rain - heavy	Tree - Broken Limb	Fused branch - overhead	240	1,481
7635436	42-9L3	08/28/2011 10:40	Rain - heavy	Tree Fell	Fused branch - overhead	137	763
7650288	43-12L1	08/28/2011 10:46	Rain - heavy	Tree Fell	Fused branch - overhead	6	84
7650355	42-13L3	08/28/2011 10:49	Rain - heavy	Tree Fell	Main line - overhead	1,995	436
7635767	42-18L2	08/28/2011 10:54	Rain - heavy	Tree Fell	Secondary/Service - overhead	116	1,716
7630997	42-14L3	08/28/2011 10:56	Rain - heavy	Tree - Broken Limb	Fused branch - overhead	263	1,443
7635370	42-13L2	08/28/2011 10:58	Rain - heavy	Tree - Broken Limb	Main line - overhead	697	530
7632086	42-9L2	08/28/2011 11:03	Rain - heavy	Tree Fell	Secondary/Service - overhead	1	1,951
7650306	43-12L2	08/28/2011 11:03	Rain - heavy	Tree Fell	Fused branch - overhead	1	147
7631597	42-13L1	08/28/2011 11:11	Rain - heavy	Tree Fell	Main line - overhead	2,094	404
7650309	43-12L2	08/28/2011 11:18	Rain - heavy	Tree Fell	Fused branch - overhead	1	132
7635393	42-14L1	08/28/2011 11:21	Rain - heavy	Tree Fell	Secondary/Service - overhead	2	1,710
7650314	41-7L1	08/28/2011 11:23	Rain - heavy	Tree Fell	Fused branch - overhead	74	141
7631751	42-14L2	08/28/2011 11:24	Rain - heavy	Tree Fell	Fused branch - overhead	11	1,806
7635314	42-14L3	08/28/2011 11:26	Rain - heavy	Tree - Broken Limb	Fused branch - overhead	59	1,354
7650290	41-1L1	08/28/2011 11:27	Rain - heavy	Tree Fell	Fused branch - overhead	23	63
7635333	42-14L3	08/28/2011 11:33	Rain - heavy	Tree Fell	Fused branch - overhead	148	1,407
7650313	43-8L1	08/28/2011 11:34	Rain - heavy	Tree - Broken Limb	Fused branch - overhead	298	163
7643140	42-14L3	08/28/2011 11:37	Rain - heavy	Tree Fell	Fused branch - overhead	53	1,403
7629310	41-1L2	08/28/2011 11:38	Rain - heavy	Tree Fell	Fused branch - overhead	105	39
7643150	42-14L3	08/28/2011 11:45	Rain - heavy	Tree Fell	Fused branch - overhead	60	1,365
7650399	42-14L1	08/28/2011 11:46	Rain - heavy	Tree Fell	Fused branch - overhead	233	603
7650336	41-7L1	08/28/2011 12:02	Rain - heavy	Tree - Broken Limb	Fused branch - overhead	40	280

Event ID	Feeder(s)	Time Off	Weather	Cause	Classification	CI	Duration
7635405	42-10L1	08/28/2011 12:14	Rain - heavy	Tree - Broken Limb	Fused branch - overhead	23	1,575
7635313	42-14L2	08/28/2011 12:20	Rain - light / moderate	Tree Fell	Transformer	9	1,821
7635338	42-14L3	08/28/2011 12:44	Rain - heavy	Tree - Broken Limb	Fused branch - overhead	37	1,395
7632654	42-9L3	08/28/2011 12:47	Rain - heavy	Tree Fell	Main line - overhead	476	460
7650621	42-18L3	08/28/2011 13:03	Rain - heavy	Unknown	Secondary/Service - overhead	1	1,596
7650324	41-1L2	08/28/2011 13:38	Rain - heavy	Tree - Broken Limb	Main line - overhead	969	113
7650359	43-12L1	08/28/2011 13:38	Rain - heavy	Tree Fell	Secondary/Service - overhead	1	270
7650343	43-12L1	08/28/2011 13:52	Rain - heavy	Tree Fell	Fused branch - overhead	150	191
7629633	43-12L2	08/28/2011 14:05	Rain - heavy	Tree Fell	Secondary/Service - overhead	1	129
7650340	43-8L1	08/28/2011 14:24	Rain - heavy	Tree Fell	Fused branch - overhead	7	112
7650391	41-39L2	08/28/2011 14:56	Rain - heavy	Tree Fell	Fused branch - overhead	1	224
7650373	41-7L1	08/28/2011 14:57	Rain - heavy	Tree Fell	Fused branch - overhead	4	291
7650371	41-7L1	08/28/2011 15:25	Rain - heavy	Tree Fell	Fused branch - overhead	40	19
7650370	43-12L1	08/28/2011 15:44	Rain - heavy	Tree Fell	Fused branch - overhead	1	135
7650360	41-16L1	08/28/2011 15:46	Rain - heavy	Tree - Broken Limb	Fused branch - overhead	1	143
7635522	42-10L2	08/28/2011 15:52	Rain - heavy	Unknown	Secondary/Service - overhead	1	1,710
7630587	41-11L2	08/28/2011 15:58	Rain - heavy	Unknown	Fused branch - overhead	1	809
7635339	42-14L1	08/28/2011 16:02	Rain - heavy	Unknown	Fused branch - overhead	6	1,680
7650358	41-1L2	08/28/2011 16:20	Rain - heavy	Tree Fell	Main line - overhead	969	48
7650368	43-12L1	08/28/2011 16:33	Rain - heavy	Tree Fell	Fused branch - overhead	1	86
7632106	42-14L2	08/28/2011 16:44	Rain - heavy	Tree Fell	Fused branch - overhead	1	1,562
7650364	43-12L1	08/28/2011 17:01	Rain - heavy	Tree Fell	Secondary/Service - overhead	1	88
7650375	41-1L2	08/28/2011 17:24	Rain - heavy	Tree Fell	Fused branch - overhead	1	151
7650388	43-12L1	08/28/2011 17:27	Rain - heavy	Tree Fell	Fused branch - overhead	72	1

Event ID	Feeder(s)	Time Off	Weather	Cause	Classification	CI	Duration
7650749	42-13L1	08/28/2011 17:30	Rain - heavy	Unknown	Secondary/Service - overhead	10	1,486
7650641	42-13L1	08/28/2011 17:36	Rain - heavy	Unknown	Secondary/Service - overhead	1	1,350
7650570	42-13L1	08/28/2011 17:40	Rain - heavy	Tree - Broken Limb	Fused branch - overhead	50	21
7650630	42-13L1	08/28/2011 17:40	Rain - heavy	Tree - Broken Limb	Fused branch - overhead	25	1,295
7650748	42-13L1	08/28/2011 17:43	Rain - heavy	Tree Fell	Fused branch - overhead	21	1,257
7635528	42-14L1	08/28/2011 17:43	Rain - heavy	Tree - Broken Limb	Secondary/Service - overhead	1	1,478
7650637	42-13L1	08/28/2011 17:49	Rain - heavy	Unknown	Secondary/Service - overhead	1	1,333
7650394	41-6L3	08/28/2011 18:21	Rain - heavy	Unknown	Customer Equipment	1	158
7650409	41-6L3	08/28/2011 18:21	Rain - heavy	Unknown	Customer Equipment	1	250
7650519	42-14L3	08/28/2011 18:41	Rain - heavy	Tree Fell	Fused branch - overhead	78	1,024
7650398	41-7L1	08/28/2011 18:50	Rain - heavy	Tree Fell	Fused branch - overhead	40	180
7650750	42-14L1	08/28/2011 18:53	Fog	Contamination	Main line - U/G in duct	1	2,260
7635552	42-14L1	08/28/2011 19:01	Rain - heavy	Unknown	Transformer	3	1,314
7632081	42-9L3	08/28/2011 20:13	Rain - heavy	Tree Fell	Secondary/Service - overhead	1	1,393
7650412	41-1L2	08/28/2011 20:17	Rain - heavy	Tree Fell	Main line - overhead	856	159
7650410	41-7L1	08/28/2011 20:54	Rain - heavy	Tree Fell	Fused branch - overhead	1	50
7650446	41-6L2	08/28/2011 21:24	Rain - heavy	Tree Fell	Fused branch - overhead	1	449
7650449	41-1L2	08/28/2011 21:43	Rain - heavy	Tree Fell	Main line - overhead	132	72
7650414	41-1L2	08/28/2011 21:54	Rain - heavy	Tree - Broken Limb	Main line - overhead	1	1
7630592	41-6L3	08/28/2011 22:14	Rain - heavy	Tree Fell	Secondary/Service - overhead	1	420
7630269	41-1L2	08/28/2011 22:26	Rain - heavy	Tree Fell	Secondary/Service - overhead	1	28
7630630	41-16L1	08/28/2011 22:29	Rain - heavy	Tree Fell	Secondary/Service - overhead	1	453
7650445	41-1L2	08/28/2011 22:51	Rain - heavy	Tree Fell	Fused branch - overhead	1	361
7650476	41-1L1	08/29/2011 01:24	Rain - heavy	Tree Fell	Fused branch - overhead	1	381
7650455	41-7L2	08/29/2011	Rain - heavy	Tree Fell	Fused branch - overhead		

Event ID	Feeder(s)	Time Off	Weather	Cause	Classification	CI	Duration
		01:39				1	341
7650751	42-13L2	08/29/2011 04:34	Rain - heavy	Tree - Broken Limb	Fused branch - overhead	1	1,810
7650592	42-13L2	08/29/2011 05:11	Rain - heavy	Tree Fell	Main line - overhead	357	359
7635598	42-13L3	08/29/2011 06:27	Rain - heavy	Tree Fell	Secondary/Service - overhead	1	1,754
7650478	41-6L3	08/29/2011 07:08	Rain - heavy	Tree - Broken Limb	Fused branch - overhead	1	102
7630808	43-12L1	08/29/2011 07:44	Rain - heavy	Tree - Broken Limb	Transformer	4	46
7650514	43-12L1	08/29/2011 07:44	Rain - heavy	Tree - Broken Limb	Fused branch - overhead	1	255
7632067	42-13L2	08/29/2011 09:32	Rain - heavy	Tree Fell	Secondary/Service - overhead	1	579
7631606	41-7L1	08/29/2011 10:03	Rain - heavy	Flooding	Secondary/Service - overhead	1	398
7650604	43-12L1	08/29/2011 10:12	Rain - heavy	Tree Fell	Fused branch - overhead	1	273
7650562	43-12L1	08/29/2011 10:22	Rain - heavy	Tree - Broken Limb	Fused branch - overhead	1	133
7635601	42-14L1	08/29/2011 10:29	Rain - heavy	Tree Fell	Secondary/Service - overhead	1	571
7631736	41-6L2	08/29/2011 10:30	Rain - heavy	Device Failed	Secondary/Service - overhead	1	395
7635429	42-14L3	08/29/2011 10:53	Rain - heavy	Tree Fell	Secondary/Service - overhead	1	462
7635385	42-14L3	08/29/2011 11:23	Rain - heavy	Tree - Broken Limb	Transformer	1	1,327
7635421	42-14L2	08/29/2011 12:12	Rain - heavy	Tree Fell	Fused branch - overhead	27	279
7635415	42-13L2	08/29/2011 12:23	Rain - heavy	Tree Fell	Secondary/Service - overhead	1	1,283
7650636	42-14L3	08/29/2011 12:23	Rain - heavy	Tree - Broken Limb	Fused branch - U/G Direct Buried	53	202
7635390	42-14L3	08/29/2011 12:41	Rain - heavy	Tree - Broken Limb	Secondary/Service - overhead	1	1,189
7635395	42-9L3	08/29/2011 12:43	Fair	Unknown	Transformer	7	61
7631743	42-14L3	08/29/2011 13:07	Rain - heavy	Tree - Broken Limb	Fused branch - overhead	18	278
7635386	42-14L3	08/29/2011 13:14	Rain - heavy	Tree - Broken Limb	Secondary/Service - overhead	1	1,203
7632348	42-14L3	08/29/2011 13:41	Rain - heavy	Tree Fell	Fused branch - overhead	37	513
7635734	42-9L3	08/29/2011 14:07	Rain - heavy	Tree Fell	Secondary/Service - overhead	1	1,304

Event ID	Feeder(s)	Time Off	Weather	Cause	Classification	CI	Duration
7650752	42-14L3	08/29/2011 14:14	Fair	Device Failed	Fused branch - overhead	78	387
7635384	42-13L3	08/29/2011 14:34	Rain - heavy	Tree Fell	Secondary/Service - overhead	1	1,091
7631602	43-12L2	08/29/2011 14:37	Rain - heavy	Flooding	Fused branch - U/G Direct Buried	1	111
7635418	42-14L1	08/29/2011 14:53	Rain - heavy	Tree - Broken Limb	Secondary/Service - overhead	9	267
7631749	42-14L3	08/29/2011 14:56	Rain - heavy	Tree - Broken Limb	Fused branch - overhead	10	154
7635402	42-13L3	08/29/2011 15:10	Rain - heavy	Tree - Broken Limb	Secondary/Service - overhead	1	1,055
7635388	42-14L2	08/29/2011 15:23	Rain - heavy	Tree - Broken Limb	Fused branch - overhead	28	236
7633208	42-9L3	08/29/2011 16:31	Rain - heavy	Tree Fell	Secondary/Service - overhead	1	964
7650677	42-9L3	08/29/2011 17:13	Rain - heavy	Unknown	Secondary/Service - overhead	1	928
7635399	42-13L3	08/29/2011 17:58	Rain - heavy	Tree Fell	Secondary/Service - overhead	1	61
7650753	42-14L3	08/29/2011 18:24	Rain - heavy	Tree - Broken Limb	Secondary/Service - overhead	1	846
7635668	42-9L3	08/29/2011 23:59	Rain - heavy	Tree - Broken Limb	Secondary/Service - overhead	1	635
7635396	42-14L3	08/30/2011 14:49	Rain - heavy	Tree - Broken Limb	Secondary/Service - overhead	1	41

Granite State Electric Company
d/b/a Liberty Utilities

August 28, 2011 Tropical Storm Irene

Total O&M Restoration Costs

Incurred January 1, 2012 Through June 30, 2012¹

Line No.	Description	Total Restoration Costs
1	Payroll charges excluding payroll overheads for GSE employees	\$ (6,778)
2	Charges for transportation on GSE vehicles	(76)
3	Charges from outside companies	15,675
4	Charges for materials and supplies	(5,229)
5	Charges for employee expenses	(196)
6	Charges for other	<u>60</u>
7	Total	\$ 3,457
8	Less Fairpoint Communications Billing	<u>(97,639)</u>
9	Total Amount Charged to Storm Fund	<u><u>\$ (94,182)</u></u>

Note ¹ - Liberty Utilities acquired Granite State Electric Company as of July 3, 2012

Granite State Electric Company
d/b/a Liberty Utilities
O&M Restoration Costs associated with Tropical Storm Irene

Line No.	Outside Companies	Jan-2012 (a)	Feb-2012 (b)	Mar-2012 (c)	Jun-2012 (d)	Amount (e)
1	Asplundh Tree Expert Co	\$ 12,712	\$ -	\$ -	\$ -	\$ 12,712
2	HSBC				19,079	19,079
3	Premier Utility Services LLC	30,585				30,585
4	Thirau LLC		30,141			30,141
5	Transfer from/(to) Capital			(912)		(912)
6	Adjustments ¹			(81,346)		(81,346)
7	Vendors < \$10,000	406	5,010			5,416
8	Subtotal Outside Companies	\$ 43,703	\$ 35,151	\$ (82,258)	\$ 19,079	\$ 15,675
9	Company Payroll			(6,778)		(6,778)
10	Transportation			(76)		(76)
11	Materials & Supplies	166		(5,396)		(5,229)
12	Employee Expenses			(196)		(196)
13	Other			60		60
14	Total O&M Restoration Costs	\$ 43,869	\$ 35,151	\$ (94,642)	\$ 19,079	\$ 3,457
15	Less Fairpoint Communications Billing	-	-	(97,639)	-	(97,639)
16	Amount Charged to Storm Fund	<u>\$ 43,869</u>	<u>\$ 35,151</u>	<u>\$ (192,281)</u>	<u>\$ 19,079</u>	<u>\$ (94,182)</u>

Note¹ - Adjustments to charges reported on the 2011 Annual Fund Report

**Granite State Electric Company
d/b/a Liberty Utilities
Annual Storm Fund Report
October 29, 2011 Snow Storm**

The Company is providing the following description of the October 29, 2011 snow storm as Attachment 4 to its Annual Storm Fund Report for calendar year 2012 activity. Per the operational reporting requirements found in § 5 of Exhibit GSE-7 of the Company's Rate Plan Settlement in Docket No. DG 06-107, this Attachment will: (1) provide a description of the storm and (2) provide a summary of the extent of the damage to the distribution system, including the number of outages and length of outages. It should be noted that the October 29, 2011 snow storm occurred while Granite State Electric Company was owned by National Grid. This report and the accompanying Exhibits have therefore been prepared by National Grid.

1. Description of the Storm

In the normal course of managing system operations, National Grid continually monitors the weather. Beginning on October 26, 2011, when it became apparent that there was a risk of a storm coming to New England, operational calls were held among operations management personnel to discuss the weather forecast and planning efforts for the possibility of an as yet unclassified storm event.

As part of this planning, leadership analyzed storm plans and reviewed preparedness with suppliers and employees in anticipation of the storm. Reviews of storm preparation checklists were undertaken to ensure National Grid was positioned to protect public safety, properly assess damage, and restore power as safely and efficiently as possible. As a result of this planning, and as the forecast for the event worsened as described below, at noon on October 28th, in accordance with National Grid's Electric Emergency Procedures ("EEP"), the Incident Command Structure ("ICS") was activated at the Regional and Branch levels.

National Grid's meteorology service anticipated a storm system that would lead from a rain/snow mix to some light snowfall accumulation across New England. Early on Thursday, October 27th, forecasters began including light accumulations of 2 to 4 inches.

Late in the afternoon of Thursday, October 27th, forecasters increased snowfall totals to the 6 to 10 inch range. By late morning on Friday, October 28th, National Grid's forecasts were indicating 7 to 12 inches of wet snowfall across a large portion of New England. Early Saturday morning, October 29th, the amount of snowfall forecasted was relatively unchanged.

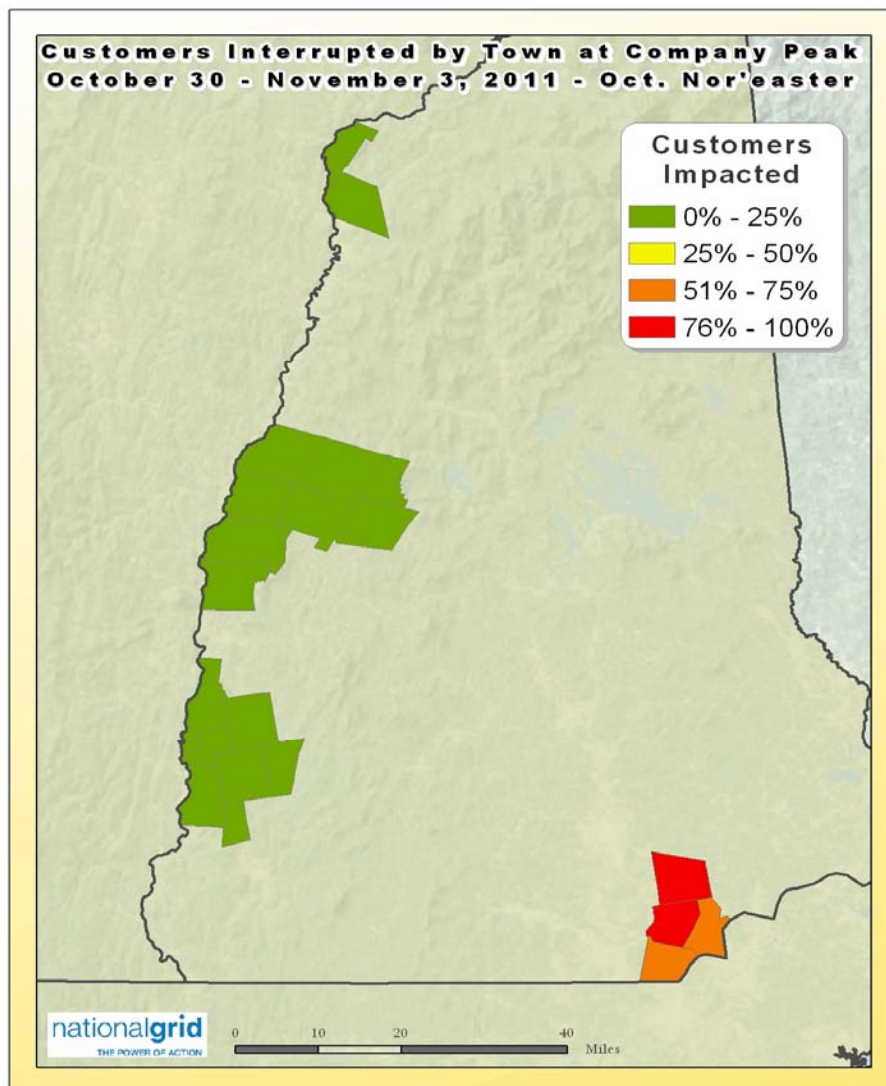
Snow accumulations across New Hampshire were generally up to a foot of snow, with many higher elevation locations across southern New Hampshire picking up over 20 inches of snowfall. The highest total reported snowfall in New Hampshire was 31 inches in Jaffrey. By Sunday morning, October 30th, snow tapered off across much of southern

New England.

2. **Summary of the Extent of the Storm Damage**

Due to the severe snow, wind and downed trees, a number of National Grid's customers were without power from Sunday, October 30, 2011 until Thursday, November 3, 2011. See Exhibit 1 for peak outages by Town.

Figure 1
October 29, 2011 Snow Storm
Customers Impacted

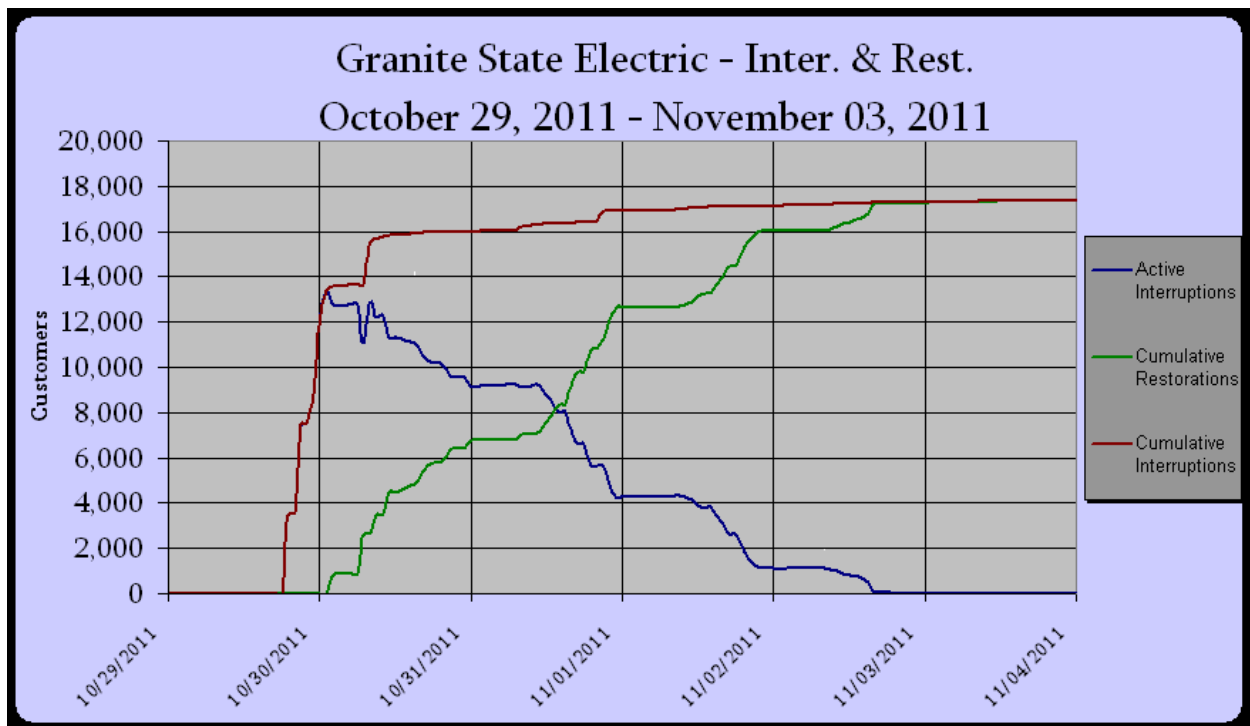


At the peak on October 30, 2011, approximately 13,300 customers were interrupted. In response to these peak outages, crews for New Hampshire were comprised of eight

internal distribution line crews and a peak of 17 contractor crews. Eight of the 17 contractor crews were mobilized by the morning of October 31st, five additional contractor crews arrived by the morning of November 1st, with the remaining four contractor crews in New Hampshire by the afternoon of November 1st. For tree crews, National Grid mobilized a peak of 31 contractor tree crews. On October 30th, four tree crews were working in New Hampshire. By the morning of October 31st, the total number of tree crews had increased to 29, and by the morning of November 1st, the total number of tree crews had increased to 31. In addition to utilizing National Grid employees, National Grid mobilized a total of 13 damage assessment personnel and 12 wires down personnel.

Ninety percent (90%) of those peak customers were restored by November 1st, at approximately 8 p.m. All remaining customers were restored by late in the day on November 3rd. A total of approximately 16,900 of National Grid’s customers were impacted at different times over the course of the October snow storm, as shown on Figure 2, which reflects the cumulative interruptions and restorations experienced by customers throughout the event.

Figure 2
October 29, 2011 Snow Storm
Customers Without Power



In all, National Grid experienced 221 events, with approximately 16,900 total customers interrupted during the October 29, 2011 snow storm. See Exhibit 1, attached to this

document, which is a table that details the event log for the storm and observed damage to National Grid’s distribution system by feeder.

After the storm, National Grid reviewed the interruption data stored in the Interruption and Disturbance System. National Grid determined that the October 29, 2011 snow storm qualified as a major storm based on the criteria established in National Grid’s Storm Contingency Fund as approved by the New Hampshire Public Utilities Commission.

Date	Troubles (Events)	Customers Interrupted	Customer Minutes Interrupted	Major Storm Qualification
10/29/2011	23	12,557	26,956,313	----
10/30/2011	59	3,421	7,224,334	>45 Events
10/31/2011	59	560	899,710	----
11/01/2011	43	213	232,336	----
11/02/2011	37	142	50,410	----

3. Details of Qualifying Costs Charged to the Storm Fund in 2012

Attachment 4: Exhibit 2 details the preliminary costs associated with the October 29, 2011 snow storm charged to the storm fund during calendar year 2012.

**Granite State Electric Company
d/b/a Liberty Utilities
Annual Storm Fund Report
October 29, 2011 Snow Storm**

Exhibit 1 is a table that details the event log for the October 29, 2011 snow storm and observed damage to National Grid's distribution system by feeder.

Event Log

Event ID	Feeder(s)	Time Off	Weather	Cause	Classification	CI	Duration
7658753	42-9L3	10/29/2011 17:16	Snow - wet	Tree - Broken Limb	Fused branch - overhead	15	177
7662228	42-13L1	10/29/2011 18:23	Snow - wet	Tree - Broken Limb	Main line - overhead	2,094	4,507
7658246	42-14L1	10/29/2011 18:25	Snow - wet	Tree Fell	Main line - overhead	1,786	5,565
7668784	42-14L3	10/29/2011 18:25	Snow - wet	Tree Fell	Main line - overhead	1,946	5,438
7660646	42-13L1	10/29/2011 18:26	Snow - wet	Tree Fell	Transformer	12	5,221
7662184	42-9L3	10/29/2011 19:16	Snow - wet	Tree Fell	Fused branch - overhead	168	1,497
7657655	42-13L3	10/29/2011 20:02	Snow - wet	Tree - Broken Limb	Main line - overhead	1,997	2,598
7657494	42-10L2	10/29/2011 20:06	Snow - wet	Tree Fell	Fused branch - overhead	443	293
7661164	42-9L3	10/29/2011 20:13	Snow - wet	Tree Fell	Fused branch - overhead	16	5,418
7659662	42-9L3	10/29/2011 20:13	Snow - wet	Tree Fell	Fused branch - overhead	136	3,714
7662227	42-13L2, 42-9L1	10/29/2011 20:59	Snow - wet	Tree Fell	Main line - overhead	2,333	5,103
7658788	42-10L2	10/29/2011 21:33	Snow - wet	Tree - Broken Limb	Fused branch - overhead	42	1,032
7662105	42-18L4	10/29/2011 22:05	Snow - wet	Tree - Broken Limb	Fused branch - overhead	103	844
7658772	42-18L2	10/29/2011 22:39	Snow - wet	Tree - Broken Limb	Transformer	12	983
7659950	42-18L2	10/29/2011 22:43	Snow - wet	Tree Fell	Secondary/Service - overhead	1	3,930
7659832	42-18L2	10/29/2011 22:44	Snow - wet	Tree Fell	Fused branch - overhead	17	3,812
7658827	42-10L1	10/29/2011 23:12	Snow - wet	Tree - Broken Limb	Fused branch - overhead	242	1,940
7659824	42-10L1	10/29/2011 23:16	Snow - wet	Tree Fell	Fused branch - overhead	192	3,767

Event ID	Feeder(s)	Time Off	Weather	Cause	Classification	CI	Duration
7657670	42-18L3	10/29/2011 23:43	Snow - wet	Tree - Broken Limb	Main line - overhead	640	504
7659937	42-10L1	10/29/2011 23:45	Snow - wet	Tree - Broken Limb	Transformer	10	3,858
7666884	42-10L1	10/29/2011 23:58	Snow - wet	Tree - Broken Limb	Fused branch - overhead	15	3,839
7657497	43-8L1	10/29/2011 23:58	Snow - wet	Tree - Broken Limb	Main line - overhead	299	82
7658108	42-18L4	10/29/2011 23:59	Snow - wet	Tree Fell	Fused branch - overhead	38	1,032
7659239	42-10L1	10/30/2011 00:38	Snow - wet	Tree - Broken Limb	Fused branch - overhead	74	906
7659936	42-10L1	10/30/2011 00:38	Snow - wet	Tree Fell	Transformer	13	3,802
7657633	43-12L2	10/30/2011 00:43	Snow - wet	Tree - Broken Limb	Fused branch - overhead	118	130
7657647	42-10L4	10/30/2011 00:44	Snow - wet	Tree Fell	Main line - overhead	656	3,777
7657661	41-7L2	10/30/2011 01:03	Snow - wet	Tree - Broken Limb	Fused branch - overhead	32	386
7657711	41-39L2	10/30/2011 01:04	Snow - wet	Tree - Broken Limb	Fused branch - overhead	42	526
7659987	42-10L2	10/30/2011 01:13	Snow - wet	Tree - Broken Limb	Secondary/Service - overhead	1	3,814
7659982	42-10L2	10/30/2011 01:13	Snow - wet	Tree - Broken Limb	Secondary/Service - overhead	1	3,810
7660342	42-18L4	10/30/2011 01:16	Snow - wet	Tree Fell	Transformer	13	3,949
7658325	42-18L4	10/30/2011 01:42	Snow - wet	Tree - Broken Limb	Fused branch - overhead	52	1,129
7657842	41-6L3	10/30/2011 01:53	Snow - wet	Tree - Broken Limb	Fused branch - overhead	25	537
7657975	41-7L1	10/30/2011 02:02	Snow - wet	Tree Fell	Secondary/Service - overhead	1	689
7659988	42-10L4	10/30/2011 03:11	Snow - wet	Tree - Broken Limb	Secondary/Service - overhead	1	3,697
7657641	43-12L1	10/30/2011 03:43	Snow - wet	Tree - Broken Limb	Transformer	6	96
7657653	43-12L1	10/30/2011 03:48	Snow - wet	Tree - Broken Limb	Transformer	2	123
7657679	41-6L2	10/30/2011 03:53	Snow - wet	Tree - Broken Limb	Fused branch - overhead	20	274
7657656	43-8L1	10/30/2011 04:53	Snow - wet	Tree - Broken Limb	Transformer	18	116
7659837	42-10L4	10/30/2011 06:23	Snow - wet	Tree - Broken Limb	Fused branch - overhead	16	3,366
7659097	42-10L2	10/30/2011 06:26	Snow - wet	Tree Fell	Fused branch - overhead	25	1,689

Event ID	Feeder(s)	Time Off	Weather	Cause	Classification	CI	Duration
7657917	41-16L1	10/30/2011 06:53	Snow - wet	Tree - Broken Limb	Fused branch - overhead	2	367
7660303	42-13L3	10/30/2011 07:00	Snow - wet	Tree - Broken Limb	Fused branch - overhead	29	3,695
7660317	42-13L3	10/30/2011 07:13	Fair	Tree Fell	Fused branch - overhead	21	3,693
7659945	42-14L2	10/30/2011 07:13	Snow - wet	Tree Fell	Main line - overhead	1,696	4,792
7657695	43-12L1	10/30/2011 07:14	Snow - wet	Tree - Broken Limb	Transformer	2	127
7659147	42-13L3	10/30/2011 07:24	Snow - wet	Tree - Broken Limb	Fused branch - overhead	52	1,616
7660184	42-18L3	10/30/2011 07:37	Snow - wet	Tree Fell	Secondary/Service - overhead	1	3,605
7659941	42-10L4	10/30/2011 07:42	Snow - wet	Unknown	Transformer	7	3,385
7659916	42-10L4	10/30/2011 07:43	Snow - wet	Tree - Broken Limb	Fused branch - overhead	16	3,358
7660173	42-18L3	10/30/2011 07:44	Snow - wet	Tree Fell	Transformer	33	3,585
7660328	42-13L3	10/30/2011 07:47	Snow - wet	Tree Fell	Transformer	12	3,729
7660197	42-18L3	10/30/2011 07:59	Snow - wet	Tree Fell	Secondary/Service - overhead	1	3,589
7660199	42-18L3	10/30/2011 08:13	Snow - wet	Tree Fell	Secondary/Service - overhead	1	3,576
7660301	42-13L3	10/30/2011 08:24	Snow - wet	Tree Fell	Fused branch - overhead	49	3,668
7659355	42-18L4	10/30/2011 08:26	Snow - wet	Tree Fell	Fused branch - overhead	58	520
7659913	42-18L4	10/30/2011 09:18	Snow - wet	Tree Fell	Fused branch - overhead	103	3,257
7657963	43-12L1	10/30/2011 09:20	Snow - wet	Tree Fell	Fused branch - overhead	6	286
7659659	42-13L2	10/30/2011 09:31	Snow - wet	Tree Fell	Secondary/Service - overhead	1	2,793
7659912	42-10L4	10/30/2011 09:47	Snow - wet	Tree Fell	Fused branch - overhead	7	3,230
7659961	42-18L4	10/30/2011 10:14	Snow - wet	Tree - Broken Limb	Transformer	5	3,255
7659946	42-10L4	10/30/2011 10:40	Snow - wet	Tree Fell	Fused branch - overhead	19	3,209
7657984	43-12L2	10/30/2011 10:41	Snow - wet	Tree Fell	Fused branch - overhead	42	237
7660332	42-13L3	10/30/2011 10:58	Snow - wet	Unknown	Transformer	5	3,540
7659407	42-10L2	10/30/2011 12:58	Snow - wet	Tree Fell	Fused branch - overhead	42	1,985

Event ID	Feeder(s)	Time Off	Weather	Cause	Classification	CI	Duration
7659990	42-10L1	10/30/2011 13:11	Snow - wet	Tree Fell	Secondary/Service - overhead	1	3,100
7658017	43-12L1	10/30/2011 13:57	Snow - wet	Tree - Broken Limb	Transformer	1	71
7666758	42-14L2	10/30/2011 14:46	Fair	Tree Fell	Secondary/Service - overhead	1	4,511
7659995	42-10L2	10/30/2011 14:49	Fair	Tree - Broken Limb	Secondary/Service - overhead	1	3,005
7661228	42-14L1	10/30/2011 14:50	Fair	Tree - Broken Limb	Secondary/Service - overhead	1	4,551
7660203	42-10L2	10/30/2011 14:54	Fair	Tree Fell	Secondary/Service - overhead	1	3,177
7660215	42-10L2	10/30/2011 14:55	Fair	Tree Fell	Secondary/Service - overhead	1	3,182
7660091	42-18L2	10/30/2011 15:00	Fair	Tree Fell	Secondary/Service - overhead	1	3,084
7659342	42-18L4	10/30/2011 15:02	Snow - wet	Tree - Broken Limb	Fused branch - overhead	38	1,765
7659992	42-10L4	10/30/2011 15:20	Fair	Tree Fell	Secondary/Service - overhead	1	2,973
7660347	42-13L3	10/30/2011 16:14	Fair	Tree Fell	Fused branch - overhead	8	3,054
7659710	42-18L4	10/30/2011 16:43	Snow - wet	Tree - Broken Limb	Fused branch - overhead	33	2,566
7660357	42-13L3	10/30/2011 16:44	Fair	Tree - Broken Limb	Secondary/Service - overhead	1	3,222
7658394	41-16L1	10/30/2011 18:16	Snow - wet	Tree - Broken Limb	Fused branch - overhead	4	178
7660653	42-14L3	10/30/2011 21:48	Fair	Tree - Broken Limb	Secondary/Service - overhead	1	3,598
7660398	42-14L3	10/30/2011 21:52	Fair	Tree - Broken Limb	Secondary/Service - overhead	1	3,010
7660913	42-14L1	10/31/2011 01:36	Fair	Tree Fell	Fused branch - overhead	61	3,648
7660946	42-13L2	10/31/2011 05:16	Fair	Tree Fell	Transformer	8	3,449
7659402	42-14L3	10/31/2011 07:23	Fair	Tree Fell	Fused branch - overhead	7	874
7660966	42-14L3	10/31/2011 07:27	Fair	Tree Fell	Transformer	9	3,336
7659296	42-9L3	10/31/2011 07:43	Fair	Tree Fell	Fused branch - overhead	81	660
7659295	42-9L3	10/31/2011 07:49	Fair	Tree Fell	Fused branch - overhead	62	652
7660363	42-13L2	10/31/2011 07:51	Fair	Tree Fell	Secondary/Service - overhead	1	2,331
7660175	42-13L2	10/31/2011 08:45	Fair	Tree Fell	Transformer	13	2,087

Event ID	Feeder(s)	Time Off	Weather	Cause	Classification	CI	Duration
7660437	42-18L3	10/31/2011 09:00	Fair	Tree - Broken Limb	Secondary/Service - overhead	1	2,396
7666856	42-9L3	10/31/2011 09:06	Fair	Tree - Broken Limb	Fused branch - overhead	1	3,246
7660435	42-9L1	10/31/2011 09:13	Fair	Tree - Broken Limb	Secondary/Service - overhead	1	2,382
7659348	42-9L3	10/31/2011 09:19	Fair	Tree - Broken Limb	Fused branch - overhead	41	626
7660361	42-10L2	10/31/2011 09:31	Fair	Tree Fell	Secondary/Service - overhead	1	2,225
7660336	42-9L3	10/31/2011 09:34	Fair	Tree Fell	Transformer	14	2,188
7659309	42-9L3	10/31/2011 09:43	Fair	Tree Fell	Fused branch - overhead	27	573
7660583	42-14L3	10/31/2011 09:51	Fair	Tree Fell	Fused branch - overhead	6	369
7666876	42-9L3	10/31/2011 10:22	Fair	Tree Fell	Transformer	12	658
7659698	42-9L3	10/31/2011 11:53	Fair	Tree - Broken Limb	Transformer	4	1,387
7662097	42-14L1	10/31/2011 11:53	Fair	Tree Fell	Transformer	13	3,082
7661027	42-14L1	10/31/2011 13:26	Fair	Tree Fell	Secondary/Service - overhead	1	3,014
7666769	42-14L2	10/31/2011 13:43	Fair	Tree - Broken Limb	Secondary/Service - overhead	1	3,137
7660440	42-13L3	10/31/2011 14:49	Fair	Tree - Broken Limb	Secondary/Service - overhead	1	2,051
7659776	42-14L2	10/31/2011 14:57	Fair	Tree Fell	Fused branch - overhead	27	1,309
7660788	42-9L3	10/31/2011 15:10	Fair	Tree Fell	Secondary/Service - overhead	1	2,720
7660131	42-10L2	10/31/2011 15:19	Fair	Tree Fell	Secondary/Service - overhead	1	1,666
7660989	42-14L2	10/31/2011 15:32	Fair	Tree Fell	Fused branch - overhead	6	2,860
7660962	42-14L3	10/31/2011 16:57	Fair	Tree Fell	Transformer	10	2,764
7662107	42-14L1	10/31/2011 17:01	Fair	Tree Fell	Secondary/Service - overhead	1	2,803
7660257	42-14L1	10/31/2011 17:14	Fair	Tree Fell	Fused branch - overhead	7	1,635
7660939	42-14L2	10/31/2011 17:14	Fair	Tree Fell	Fused branch - overhead	2	2,727
7660997	42-14L3	10/31/2011 17:14	Fair	Tree Fell	Secondary/Service - overhead	1	2,764
7660692	42-14L3	10/31/2011 17:15	Fair	Tree Fell	Transformer	6	2,477

Event ID	Feeder(s)	Time Off	Weather	Cause	Classification	CI	Duration
7661136	42-14L3	10/31/2011 17:15	Fair	Tree - Broken Limb	Secondary/Service - overhead	1	2,905
7666889	42-14L1	10/31/2011 17:23	Fair	Tree Fell	Secondary/Service - overhead	1	2,784
7660855	42-14L1	10/31/2011 18:36	Fair	Tree - Broken Limb	Secondary/Service - overhead	1	2,590
7661043	42-14L3	10/31/2011 19:13	Fair	Tree Fell	Secondary/Service - overhead	1	2,685
7660369	42-14L3	10/31/2011 19:23	Fair	Tree Fell	Secondary/Service - overhead	1	1,644
7660936	42-13L1	10/31/2011 19:23	Fair	Tree Fell	Transformer	5	2,596
7660991	42-14L3	10/31/2011 19:33	Fair	Tree Fell	Transformer	7	2,623
7660365	42-9L3	10/31/2011 19:43	Fair	Tree - Broken Limb	Secondary/Service - overhead	1	1,621
7661343	42-13L1	10/31/2011 19:54	Fair	Tree Fell	Secondary/Service - overhead	1	2,917
7660153	42-14L1	10/31/2011 19:57	Fair	Tree Fell	Fused branch - overhead	62	1,402
7659736	42-13L1	10/31/2011 20:24	Fair	Tree Fell	Fused branch - overhead	11	937
7661018	42-14L1	10/31/2011 20:44	Fair	Tree Fell	Transformer	2	2,568
7660358	42-13L1	10/31/2011 20:57	Fair	Tree - Broken Limb	Secondary/Service - overhead	1	1,530
7660444	42-13L1	10/31/2011 20:57	Fair	Tree - Broken Limb	Secondary/Service - overhead	1	1,688
7661335	42-13L1	10/31/2011 21:13	Fair	Tree - Broken Limb	Secondary/Service - overhead	1	2,832
7660448	42-13L1	10/31/2011 21:13	Fair	Tree Fell	Secondary/Service - overhead	1	1,674
7661348	42-13L1	10/31/2011 21:13	Fair	Tree Fell	Secondary/Service - overhead	1	2,841
7660352	42-13L1	10/31/2011 21:13	Fair	Tree Fell	Fused branch - overhead	4	1,388
7660449	42-13L1	10/31/2011 21:13	Fair	Tree - Broken Limb	Secondary/Service - overhead	1	1,676
7660451	42-13L1	10/31/2011 21:13	Fair	Tree - Broken Limb	Secondary/Service - overhead	1	1,677
7661327	42-14L1	10/31/2011 21:23	Fair	Tree - Broken Limb	Secondary/Service - overhead	1	2,814
7659718	42-13L2	10/31/2011 21:23	Fair	Tree Fell	Transformer	5	853
7661002	42-14L1	10/31/2011 21:34	Fair	Tree Fell	Transformer	4	2,506
7660452	42-13L1	10/31/2011 21:43	Fair	Tree - Broken Limb	Secondary/Service - overhead	1	1,648

Event ID	Feeder(s)	Time Off	Weather	Cause	Classification	CI	Duration
7660453	42-13L1	10/31/2011 21:53	Fair	Tree - Broken Limb	Secondary/Service - overhead	1	1,639
7660779	42-13L2	10/31/2011 23:30	Fair	Tree Fell	Secondary/Service - overhead	1	2,212
7660668	42-14L2	10/31/2011 23:36	Fair	Tree - Broken Limb	Fused branch - overhead	14	2,071
7659957	42-14L2	11/01/2011 00:40	Fair	Tree - Broken Limb	Fused branch - overhead	12	948
7661230	42-14L1	11/01/2011 06:23	Fair	Tree - Broken Limb	Secondary/Service - overhead	1	2,180
7660126	42-14L2	11/01/2011 06:33	Fair	Tree - Broken Limb	Secondary/Service - overhead	1	751
7660953	42-14L2	11/01/2011 06:46	Fair	Tree - Broken Limb	Fused branch - overhead	9	1,929
7661149	42-14L3	11/01/2011 07:37	Fair	Tree - Broken Limb	Secondary/Service - overhead	1	2,052
7661139	42-14L3	11/01/2011 08:00	Fair	Tree - Broken Limb	Secondary/Service - overhead	1	2,023
7660455	42-13L2	11/01/2011 08:13	Fair	Tree - Broken Limb	Secondary/Service - overhead	1	1,022
7661172	42-14L1	11/01/2011 08:21	Fair	Tree - Broken Limb	Secondary/Service - overhead	1	2,027
7660516	42-13L1	11/01/2011 08:26	Fair	Tree Fell	Transformer	11	1,192
7666803	42-14L2	11/01/2011 08:33	Fair	Tree - Broken Limb	Secondary/Service - overhead	1	2,025
7666994	42-14L2	11/01/2011 08:33	Fair	Tree - Broken Limb	Secondary/Service - overhead	1	2,025
7660662	42-14L2	11/01/2011 08:42	Fair	Tree Fell	Fused branch - overhead	35	1,516
7660945	42-13L2	11/01/2011 08:44	Fair	Tree - Broken Limb	Secondary/Service - overhead	1	1,801
7660251	42-14L1	11/01/2011 09:00	Fair	Tree Fell	Secondary/Service - overhead	1	683
7660329	42-9L1	11/01/2011 10:12	Fair	Tree Fell	Transformer	17	705
7660652	42-13L1	11/01/2011 10:33	Fair	Tree Fell	Transformer	18	1,390
7661140	42-14L3	11/01/2011 10:43	Fair	Tree - Broken Limb	Secondary/Service - overhead	1	1,862
7660359	42-18L2	11/01/2011 10:45	Fair	Tree Fell	Secondary/Service - overhead	1	708
7661197	42-14L2	11/01/2011 11:13	Fair	Tree - Broken Limb	Secondary/Service - overhead	1	1,867
7660536	42-13L1	11/01/2011 11:19	Fair	Tree - Broken Limb	Secondary/Service - overhead	1	1,095
7661190	42-14L2	11/01/2011 11:43	Fair	Tree - Broken Limb	Secondary/Service - overhead	1	1,834

Event ID	Feeder(s)	Time Off	Weather	Cause	Classification	CI	Duration
7660503	42-18L4	11/01/2011 11:57	Fair	Tree - Broken Limb	Secondary/Service - overhead	1	928
7660839	42-14L2	11/01/2011 12:46	Fair	Tree Fell	Fused branch - overhead	28	1,480
7659843	41-6L3	11/01/2011 13:27	Fair	Animal	Fused branch - overhead	42	40
7661436	42-9L3	11/01/2011 13:50	Fair	Tree Fell	Secondary/Service - overhead	1	1,970
7660538	42-13L1	11/01/2011 13:53	Fair	Tree Fell	Secondary/Service - overhead	1	944
7661214	42-14L2	11/01/2011 15:28	Fair	Tree - Broken Limb	Secondary/Service - overhead	1	1,623
7661070	42-14L3	11/01/2011 15:51	Fair	Tree - Broken Limb	Secondary/Service - overhead	1	1,466
7661341	42-13L1	11/01/2011 15:57	Fair	Tree - Broken Limb	Secondary/Service - overhead	1	1,713
7660539	42-13L1	11/01/2011 16:01	Fair	Tree - Broken Limb	Secondary/Service - overhead	1	817
7660605	42-14L2	11/01/2011 16:46	Fair	Tree - Broken Limb	Secondary/Service - overhead	1	925
7660540	42-13L1	11/01/2011 16:56	Fair	Tree Fell	Secondary/Service - overhead	1	764
7661674	42-14L3	11/01/2011 17:13	Fair	Tree - Broken Limb	Secondary/Service - overhead	1	2,133
7661145	42-14L3	11/01/2011 17:13	Fair	Tree - Broken Limb	Secondary/Service - overhead	1	1,475
7660781	42-13L3	11/01/2011 17:34	Fair	Tree - Broken Limb	Secondary/Service - overhead	1	1,131
7661699	42-14L1	11/01/2011 17:39	Fair	Tree - Broken Limb	Secondary/Service - overhead	1	2,202
7660695	42-14L3	11/01/2011 17:53	Fair	Tree - Broken Limb	Transformer	4	1,003
7661511	42-14L1	11/01/2011 18:29	Fair	Tree - Broken Limb	Secondary/Service - overhead	1	1,787
7660743	42-14L3	11/01/2011 19:15	Fair	Tree Fell	Fused branch - overhead	4	972
7661102	42-14L2	11/01/2011 19:55	Fair	Tree - Broken Limb	Secondary/Service - overhead	1	1,256
7661514	42-14L1	11/01/2011 20:10	Fair	Tree - Broken Limb	Secondary/Service - overhead	1	1,688
7661202	42-14L2	11/01/2011 20:29	Fair	Tree - Broken Limb	Secondary/Service - overhead	1	1,312
7661173	42-14L2	11/01/2011 22:00	Fair	Tree - Broken Limb	Secondary/Service - overhead	1	1,207
7660690	42-13L1	11/02/2011 01:48	Fair	Tree - Broken Limb	Fused branch - overhead	28	518
7661079	42-14L1	11/02/2011 06:16	Fair	Device Failed	Transformer	2	610

Event ID	Feeder(s)	Time Off	Weather	Cause	Classification	CI	Duration
7661340	42-13L2	11/02/2011 07:49	Fair	Tree Fell	Secondary/Service - overhead	1	759
7661175	42-14L2	11/02/2011 08:11	Fair	Tree Fell	Secondary/Service - overhead	1	598
7661438	42-9L1	11/02/2011 08:24	Fair	Tree - Broken Limb	Secondary/Service - overhead	1	857
7661117	42-14L2	11/02/2011 08:26	Fair	Tree - Broken Limb	Secondary/Service - overhead	1	520
7661141	42-14L3	11/02/2011 08:32	Fair	Tree - Broken Limb	Secondary/Service - overhead	1	555
7660933	42-9L1	11/02/2011 08:51	Fair	Tree - Broken Limb	Transformer	16	347
7661718	42-18L4	11/02/2011 08:53	Fair	Tree Fell	Secondary/Service - overhead	1	1,319
7661138	42-14L1	11/02/2011 08:59	Fair	Tree - Broken Limb	Secondary/Service - overhead	1	523
7660745	42-14L1	11/02/2011 09:27	Fair	Tree Fell	Fused branch - overhead	50	119
7660681	42-14L3	11/02/2011 09:28	Fair	Tree - Broken Limb	Secondary/Service - overhead	1	49
7661540	42-14L2	11/02/2011 09:28	Fair	Tree - Broken Limb	Secondary/Service - overhead	1	917
7661016	42-14L1	11/02/2011 09:59	Fair	Tree - Broken Limb	Transformer	8	324
7666954	42-14L1	11/02/2011 10:13	Fair	Tree Fell	Secondary/Service - overhead	1	643
7661346	42-10L1	11/02/2011 10:23	Fair	Tree - Broken Limb	Secondary/Service - overhead	1	610
7661115	42-14L2	11/02/2011 10:41	Fair	Tree - Broken Limb	Secondary/Service - overhead	1	384
7661216	42-14L2	11/02/2011 10:45	Fair	Tree Fell	Secondary/Service - overhead	1	466
7661237	42-14L1	11/02/2011 10:49	Fair	Tree - Broken Limb	Secondary/Service - overhead	1	476
7661006	42-13L2	11/02/2011 11:43	Fair	Tree - Broken Limb	Secondary/Service - overhead	1	220
7661004	42-9L3	11/02/2011 11:47	Fair	Tree - Broken Limb	Secondary/Service - overhead	1	215
7661338	42-13L1	11/02/2011 12:13	Fair	Tree - Broken Limb	Secondary/Service - overhead	1	494
7661330	42-13L2	11/02/2011 12:26	Fair	Tree Fell	Secondary/Service - overhead	1	475
7661107	42-14L3	11/02/2011 12:56	Fair	Tree - Broken Limb	Secondary/Service - overhead	1	237
7661048	42-9L3	11/02/2011 13:29	Fair	Tree - Broken Limb	Secondary/Service - overhead	1	155
7661301	42-13L2	11/02/2011 14:33	Fair	Deterioration	Secondary/Service - overhead	1	318

Event ID	Feeder(s)	Time Off	Weather	Cause	Classification	CI	Duration
7661089	42-14L1	11/02/2011 14:36	Fair	Tree - Broken Limb	Secondary/Service - overhead	1	123
7661370	42-14L2	11/02/2011 15:17	Fair	Tree - Broken Limb	Secondary/Service - overhead	1	348
7661274	42-14L3	11/02/2011 15:34	Fair	Tree - Broken Limb	Secondary/Service - overhead	1	223
7661264	42-14L1	11/02/2011 15:35	Fair	Tree - Broken Limb	Secondary/Service - overhead	1	217
7661113	42-14L2	11/02/2011 16:17	Fair	Tree - Broken Limb	Secondary/Service - overhead	1	40
7661357	42-14L2	11/02/2011 16:22	Fair	Tree - Broken Limb	Secondary/Service - overhead	1	270
7661706	42-13L2	11/02/2011 17:57	Fair	Tree - Broken Limb	Secondary/Service - overhead	1	750
7661358	42-14L1	11/02/2011 18:03	Fair	Tree - Broken Limb	Secondary/Service - overhead	1	171
7661685	42-13L3	11/02/2011 18:09	Fair	Tree - Broken Limb	Secondary/Service - overhead	1	658
7661687	42-14L1	11/02/2011 19:53	Fair	Tree - Broken Limb	Secondary/Service - overhead	1	568
7661518	42-14L1	11/02/2011 20:23	Fair	Tree - Broken Limb	Secondary/Service - overhead	7	911

Granite State Electric Company
d/b/a Liberty Utilities
October 29, 2011 Snow Storm
Total O&M Restoration Costs
Incurred January 1, 2012 Through June 30, 2012¹

Line No.	Description	Total Restoration Costs
1	Payroll charges excluding payroll overheads for GSE employees	\$ 15,211
2	Charges for transportation on GSE vehicles	1,298
3	Charges from outside companies	641,428
4	Charges for materials and supplies	10,664
5	Charges for employee expenses	(9)
6	Charges for other	-
7	Total	\$ 668,592
8	Less Fairpoint Communications Billing	(156,364)
9	Total Amount Charged to Storm Fund	\$ 512,229

Note ¹ - Liberty Utilities acquired Granite State Electric Company as of July 3, 2012

Granite State Electric Company
d/b/a Liberty Utilities
O&M Restoration Costs associated with October 2011 Snow Storm

Line No.	Outside Companies	Jan-2012 (a)	Feb-2012 (b)	Mar-2012 (c)	Apr-2012 (d)	Amount (e)
1	Asplundh Tree Expert Co	\$ 38,295	\$ 16,105	\$ -	\$ -	\$ 54,401
2	D&D Power Inc	129,470				129,470
3	Grattan Line Construction Corporation	213,446				213,446
4	HSBC Corporate Card Services		57,606			57,606
5	Power Secure Inc	124,216				124,216
6	Transfer from/(to) Capital			38,452		38,452
7	Vendors < \$10,000	8,324	14,121	811	581	23,837
8	Subtotal Outside Companies	\$ 513,751	\$ 87,833	\$ 39,263	\$ 581	\$ 641,428
9	Company Payroll	(11,188)	278	26,120	-	15,211
10	Transportation	-	50	1,248	-	1,298
11	Materials & Supplies	-	1,479	9,185	-	10,664
12	Employee Expenses	-	-	(9)	-	(9)
13	Other	-	-	-	-	-
14	Total O&M Restoration Costs	\$ 502,564	\$ 89,640	\$ 75,807	\$ 581	\$ 668,592
15	Less Fairpoint Communications Billing	-	-	(156,364)	-	(156,364)
16	Amount Charged to Storm Fund	<u>\$ 502,564</u>	<u>\$ 89,640</u>	<u>\$ (80,556)</u>	<u>\$ 581</u>	<u>\$ 512,229</u>

**Granite State Electric Company
d/b/a Liberty Utilities
Annual Storm Fund Report
October 29, 2012 Hurricane Sandy**

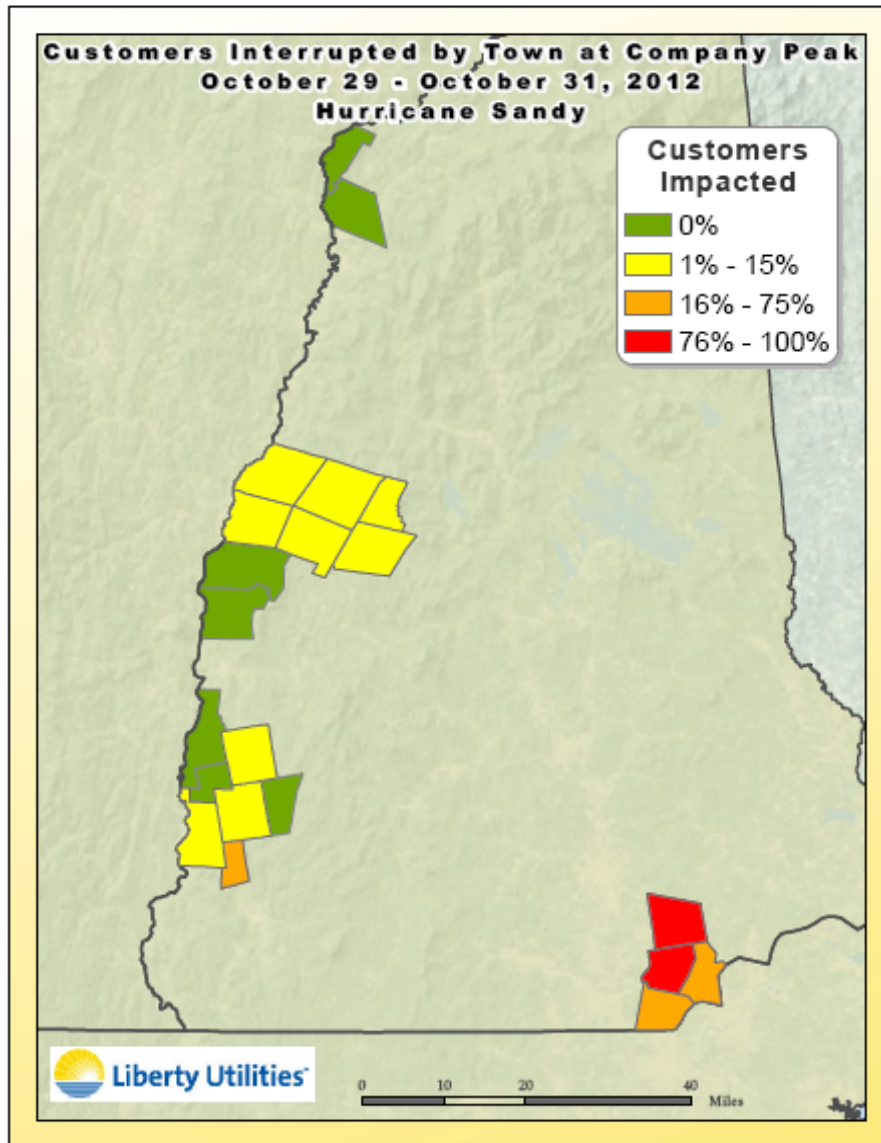
The Company is providing the following description of the October 29, 2012 Hurricane Sandy storm event as Attachment 5 to its Annual Storm Fund Report for calendar year 2012 activity. Per the operational reporting requirements found in § 5 of Exhibit GSE-7 of the Company's Rate Plan Settlement in Docket No. DG 06-107, this Attachment will: (1) provide a description of the storm and (2) provide a summary of the extent of the damage to the distribution system, including the number of outages and length of outages. It should be noted that the October 29, 2012 Hurricane Sandy storm event occurred following the acquisition of Granite State Electric Company by Liberty Utilities. This report and the accompanying Exhibits have therefore been prepared by Liberty Utilities.

1. Description of the Storm

Hurricane Sandy originated in the Caribbean as a tropical storm on October 22, 2012. Travelling north, Tropical Storm Sandy transformed into a level 1 hurricane when it made landfall on October 29, 2012, at 8 am in New Jersey. Wind gusts of 60+ mph were experienced in the Salem Area of the Company's service territory from approximately 2 pm until midnight on October 29, 2012. The majority of the 10,251 interrupted customers at storm peak were in the Salem / Pelham / Windham service territory. The wind impact was significantly less in Liberty's other two service territories; however, the storm impacted 10 of the Company's 17 communities within the Charlestown and Lebanon Service territories.

Please see **Figure 1** for an illustrative representation of customer interruptions by town.

Figure 1 – Hurricane Sandy



3. Summary of the Extent of the Storm Damage

The chart below details the following by date:

- 13,142 of the Company's customers were without power from Monday, October 29, 2012 until Wednesday, October 31, 2012.
- Liberty Utilities experienced 228 events, with 13,142 customers interrupted in its service territory during Hurricane Sandy.

Date	Events	Customers Interrupted	Customer Minutes Interrupted	Major Storm Qualification
10/29/2012	129	11,296	15,490,770	>45 Events &> 15%
10/30/2012	65	1,511	729,980	>45 Events
10/31/2012	34	335	31,655	---

Exhibit 1, attached to this report is a table that details the observed damage to the Company’s distribution system by circuit number.

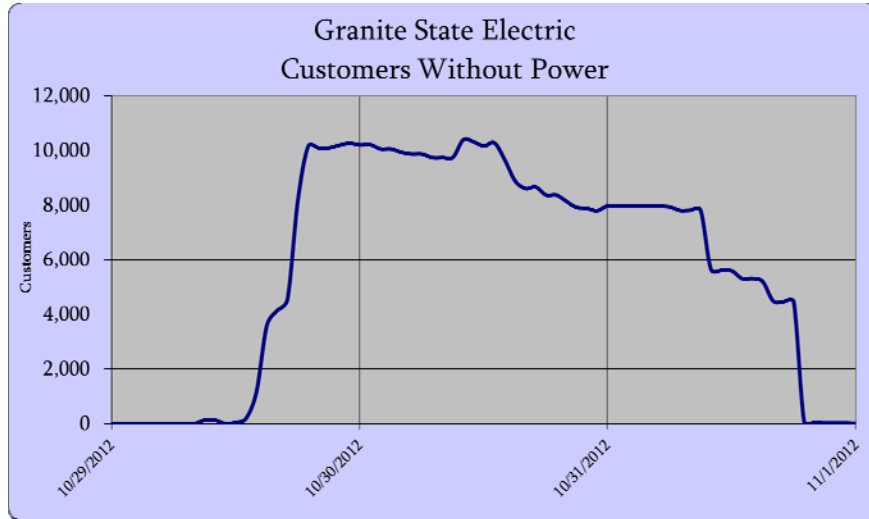
Throughout the event, Liberty Utilities utilized 27 Contractor Tree Service personnel, 27 Contractor Line Workers, and 8.5 Company Line Workers during the restoration process.

For support personnel, Liberty Utilities utilized 10 Damage Assessment personnel, comprised of both Company personnel and retirees from the Electric Operations group. In addition, 44 Company personnel, from both Electric Operations and Gas Operations, conducted wires down and wires down appraisal functions. Other support personnel including storm room support, Field Contractor crew supervision, and general storm support were assigned utilizing 46 Company and contractor personnel.

Ninety percent (90%) of the Company’s New Hampshire customers affected were restored by 9 am on Wednesday, October 31, 2012, with the remaining ten percent (10%) restored approximately 14 hours later.

Figure 2 shows the number of customers without power by date and hour.

Figure 2
October 29, 2012 Hurricane Sandy
Customers Without Power



Reliability Analysis and Reporting reviewed the interruption data stored in the Interruption and Disturbance System (IDS) after the storm. It was determined that Hurricane Sandy qualified as major storm days based on the criteria established in the Company's Storm Contingency Fund by the New Hampshire Public Utilities Commission.

3. Details of Qualifying Costs Charged to the Storm Fund in 2012

Attachment 5: Exhibit 2 details the preliminary costs associated with the October 29, 2012 Hurricane Sandy storm event charged to the storm fund during calendar year 2012.

**Granite State Electric Company
d/b/a Liberty Utilities
Annual Storm Fund Report
October 29, 2012 Hurricane Sandy**

Exhibit 1 is a table that details the event log for the October 29, 2012 Hurricane Sandy and observed damage to the Company's distribution system by circuit number.

Event Log

Event ID	Feeder(s)	Time Off	Weather	Cause	Classification	CI	Duration (minutes)
7710478	42-14L3	10/29/2012 08:16	Rain - light / moderate	Tree - Broken Limb	Fused branch - overhead	136	114
7710589	42-18L4	10/29/2012 11:45	Rain - heavy	Tree Fell	Fused branch - overhead	51	120
7710606	42-14L3	10/29/2012 12:42	Rain - heavy	Tree - Broken Limb	Fused branch - overhead	148	111
7710605	42-18L4	10/29/2012 13:25	Rain - heavy	Unknown	Fused branch - overhead	1	62
7710650	41-6L2	10/29/2012 13:36	Rain - light / moderate	Tree Fell	Fused branch - overhead	1	111
7710808	42-18L2	10/29/2012 13:41	Rain - heavy	Tree Fell	Fused branch - overhead	106	314
7712748	42-13L2	10/29/2012 13:51	Rain - heavy	Tree Fell	Main line - overhead	697	2996
7711314	42-14L2	10/29/2012 13:52	Rain - heavy	Tree - Broken Limb	Fused branch - overhead	109	316
7715061	42-9L3	10/29/2012 13:53	Rain - heavy	Tree Fell	Fused branch - overhead	10	3448
7713753	42-9L3	10/29/2012 13:53	Rain - heavy	Tree Fell	Fused branch - overhead	86	2906
7712687	42-13L2	10/29/2012 14:02	Rain - heavy	Unknown	Main line - overhead	1	2004
7712817	42-14L3	10/29/2012 14:03	Rain - light / moderate	Unknown	Secondary/Service - overhead	1	2339
7714727	42-14L3	10/29/2012 14:06	Rain - light / moderate	Tree - Broken Limb	Secondary/Service - overhead	1	3251
7712668	42-13L2	10/29/2012 14:06	Rain - heavy	Unknown	Main line - overhead	1	2000
7712715	42-13L2	10/29/2012 14:09	Rain - heavy	Unknown	Main line - overhead	1	1997
7714263	42-18L4	10/29/2012 14:11	Rain - heavy	Tree - Broken Limb	Fused branch - overhead	1	128
7712659	42-13L2	10/29/2012 14:15	Rain - heavy	Under Voltage	Main line - overhead	1	1991
7712700	42-13L2	10/29/2012 14:18	Rain - heavy	Unknown	Main line - overhead	1	1988
7712692	42-13L2	10/29/2012 14:20	Rain - heavy	Unknown	Main line - overhead	1	1986
7712677	42-13L2	10/29/2012	Rain - heavy	Unknown	Main line - overhead	1	1977

Event ID	Feeder(s)	Time Off	Weather	Cause	Classification	CI	Duration (minutes)
		14:28					
7710747	42-9L3	10/29/2012 14:34	Rain - light / moderate	Tree - Broken Limb	Fused branch - overhead	114	167
7712332	42-13L1	10/29/2012 14:36	Rain - heavy	Tree Fell	Main line - overhead	2102	2562
7712492	42-14L3	10/29/2012 14:38	Rain - heavy	Tree Fell	Fused branch - overhead	59	1827
7712347	42-14L3	10/29/2012 14:40	Rain - heavy	Tree Fell	Fused branch - overhead	136	1742
7712651	42-13L2	10/29/2012 14:42	Rain - heavy	Unknown	Main line - overhead	1	1964
7712022	42-14L2	10/29/2012 14:48	Rain - light / moderate	Tree - Broken Limb	Fused branch - overhead	36	1503
7713271	42-9L3	10/29/2012 14:49	Rain - heavy	Device Failed	Transformer	12	2656
7710760	41-7L2	10/29/2012 14:51	Rain - light / moderate	Tree - Broken Limb	Fused branch - overhead	39	164
7710732	42-13L2	10/29/2012 14:58	Rain - light / moderate	Tree - Broken Limb	Fused branch - overhead	70	137
7714217	42-14L3	10/29/2012 15:00	Rain - heavy	Tree - Broken Limb	Fused branch - overhead	11	3150
7714454	42-14L2	10/29/2012 15:03	Rain - light / moderate	Tree - Broken Limb	Secondary/Service - overhead	1	3103
7710755	42-14L3	10/29/2012 15:03	Rain - light / moderate	Tree - Broken Limb	Fused branch - overhead	41	150
7712757	42-14L3	10/29/2012 15:04	Rain - light / moderate	Tree - Broken Limb	Secondary/Service - overhead	1	2287
7711107	43-12L1	10/29/2012 15:07	Rain - heavy	Tree - Broken Limb	Fused branch - overhead	20	477
7714375	42-13L2	10/29/2012 15:12	Rain - heavy	Tree - Broken Limb	Secondary/Service - overhead	1	3053
7714495	42-14L3	10/29/2012 15:20	Rain - heavy	Tree Fell	Fused branch - overhead	40	3098
7712719	42-13L2	10/29/2012 15:23	Rain - heavy	Unknown	Main line - overhead	1	1924
7712470	42-14L1	10/29/2012 15:25	Rain - heavy	Tree Fell	Fused branch - overhead	210	1774
7711072	43-12L1	10/29/2012 15:26	Rain - heavy	Tree - Broken Limb	Fused branch - overhead	10	452
7710764	41-6L3	10/29/2012 15:28	Rain - light / moderate	Tree Fell	Fused branch - overhead	1	148
7711830	42-18L2	10/29/2012 15:29	Rain - light / moderate	Tree Fell	Fused branch - overhead	50	1393
7710827	41-1L3	10/29/2012 15:36	Rain - light / moderate	Tree - Broken Limb	Fused branch - overhead	1	219
7712661	42-13L2	10/29/2012 15:41	Rain - heavy	Unknown	Main line - overhead	1	1905
7710870	43-12L1	10/29/2012 15:49	Rain - light / moderate	Tree - Broken Limb	Fused branch - overhead	1	256
7712969	42-18L2	10/29/2012 15:51	Rain - heavy	Unknown	Main line - overhead	1	2460

Event ID	Feeder(s)	Time Off	Weather	Cause	Classification	CI	Duration (minutes)
7711162	43-12L2	10/29/2012 15:52	Rain - heavy	Tree - Broken Limb	Fused branch - overhead	130	579
7714513	42-14L2	10/29/2012 15:56	Rain - heavy	Tree Fell	Fused branch - overhead	27	3076
7712198	42-14L2	10/29/2012 16:22	Rain - light / moderate	Tree - Broken Limb	Fused branch - overhead	86	1478
7710863	41-16L1	10/29/2012 16:24	Rain - light / moderate	Tree - Broken Limb	Fused branch - overhead	30	235
7713850	42-13L2	10/29/2012 16:25	Rain - heavy	Tree - Broken Limb	Fused branch - overhead	1	2039
7714152	42-14L3	10/29/2012 16:27	Rain - heavy	Tree - Broken Limb	Secondary/Service - overhead	1	3013
7714379	42-13L2	10/29/2012 16:27	Rain - light / moderate	Tree - Broken Limb	Secondary/Service - overhead	1	2979
7714393	42-18L2	10/29/2012 16:28	Rain - light / moderate	Tree - Broken Limb	Secondary/Service - overhead	1	2986
7712188	42-14L2	10/29/2012 16:28	Rain - heavy	Tree Fell	Fused branch - overhead	95	1354
7710824	43-12L1	10/29/2012 16:31	Rain - light / moderate	Tree Fell	Secondary/Service - overhead	1	163
7710886	41-7L2	10/29/2012 16:35	Rain - light / moderate	Tree - Broken Limb	Fused branch - overhead	1	60
7716143	42-18L4	10/29/2012 16:35	Rain - heavy	Unknown	Secondary/Service - overhead	1	3978
7712730	42-9L3	10/29/2012 16:36	Rain - light / moderate	Tree - Broken Limb	Fused branch - overhead	62	1870
7714296	42-14L3	10/29/2012 16:46	Rain - heavy	Unknown	Main line - overhead	1	2912
7712903	42-9L3	10/29/2012 16:50	Rain - heavy	Tree Fell	Fused branch - overhead	45	2246
7712999	42-9L3	10/29/2012 16:56	Rain - light / moderate	Tree - Broken Limb	Fused branch - overhead	79	2404
7711570	41-7L1	10/29/2012 16:59	Rain - light / moderate	Tree Fell	Fused branch - overhead	1	1122
7710973	41-16L1	10/29/2012 17:05	Rain - light / moderate	Tree Fell	Fused branch - overhead	6	265
7714276	42-18L4	10/29/2012 17:07	Rain - heavy	Tree - Broken Limb	Fused branch - overhead	1	2647
7710974	41-16L1	10/29/2012 17:09	Rain - light / moderate	Tree Fell	Fused branch - overhead	1	263
7714003	42-14L1	10/29/2012 17:12	Rain - light / moderate	Tree - Broken Limb	Secondary/Service - overhead	1	2949
7713621	42-9L3	10/29/2012 17:13	Rain - heavy	Unknown	Main line - overhead	2	2658
7711111	41-7L1	10/29/2012 17:17	Rain - heavy	Tree Fell	Fused branch - overhead	13	414
7712341	42-13L1, 42-13L2, 42-13L3	10/29/2012 17:23	Rain - heavy	Tree Fell	T or D Supply - below 69 KV	3583	2919
7714265	42-14L3	10/29/2012 17:25	Rain - heavy	Unknown	Main line - overhead	1	2859

Event ID	Feeder(s)	Time Off	Weather	Cause	Classification	CI	Duration (minutes)
7711284	42-10L2	10/29/2012 17:33	Rain - light / moderate	Tree - Broken Limb	Fused branch - overhead	75	746
7711073	41-7L2	10/29/2012 17:36	Rain - heavy	Tree - Broken Limb	Fused branch - overhead	1	326
7711697	42-18L2	10/29/2012 17:37	Rain - heavy	Tree - Broken Limb	Fused branch - overhead	51	234
7714806	42-14L1	10/29/2012 17:38	Rain - heavy	Tree - Broken Limb	Fused branch - overhead	1	3089
7711698	42-18L2	10/29/2012 17:46	Rain - heavy	Tree - Broken Limb	Fused branch - overhead	106	156
7713298	42-9L3	10/29/2012 17:49	Rain - heavy	Tree - Broken Limb	Secondary/Service - overhead	1	2536
7711238	41-7L1	10/29/2012 17:50	Rain - heavy	Tree - Broken Limb	Fused branch - overhead	30	583
7711307	41-7L2	10/29/2012 17:59	Rain - heavy	Tree Fell	Fused branch - overhead	28	660
7711100	41-16L1	10/29/2012 18:01	Rain - heavy	Tree - Broken Limb	Fused branch - overhead	44	347
7712206	42-14L3	10/29/2012 18:10	Rain - light / moderate	Tree - Broken Limb	Fused branch - overhead	221	1415
7711782	42-10L4	10/29/2012 18:12	Rain - heavy	Tree Fell	Main line - overhead	651	1155
7711691	42-10L1	10/29/2012 18:13	Rain - light / moderate	Deterioration	Fused branch - overhead	275	1050
7712831	42-10L4	10/29/2012 18:18	Rain - light / moderate	Tree - Broken Limb	Fused branch - overhead	6	1735
7711153	41-16L1	10/29/2012 18:18	Rain - heavy	Tree - Broken Limb	Fused branch - overhead	30	426
7713779	42-14L3	10/29/2012 18:20	Rain - light / moderate	Tree - Broken Limb	Fused branch - overhead	42	2645
7714466	42-14L2	10/29/2012 18:21	Rain - light / moderate	Tree - Broken Limb	Fused branch - U/G in duct	40	2909
7712726	42-10L4	10/29/2012 18:22	Rain - light / moderate	Tree - Broken Limb	Transformer	9	1689
7714398	42-18L3	10/29/2012 18:25	Rain - light / moderate	Tree Fell	Main line - overhead	677	2870
7712425	42-10L1	10/29/2012 18:27	Rain - heavy	Tree - Broken Limb	Fused branch - overhead	36	1309
7712652	42-10L1	10/29/2012 18:32	Rain - light / moderate	Tree - Broken Limb	Fused branch - overhead	17	1724
7712691	42-10L4	10/29/2012 18:42	Rain - light / moderate	Tree - Broken Limb	Transformer	13	1690
7713645	42-10L2	10/29/2012 18:44	Rain - heavy	Tree Fell	Main line - overhead	1	2535
7712976	42-9L3	10/29/2012 18:44	Rain - light / moderate	Control Trouble	Main line - overhead	1	2300
7712698	42-10L4	10/29/2012 18:44	Rain - light / moderate	Tree - Broken Limb	Fused branch - overhead	11	1667
7714229	42-14L3	10/29/2012 18:47	Rain - light / moderate	Tree - Broken Limb	Secondary/Service - overhead	1	2869
7712801	42-9L2	10/29/2012	Rain - heavy	Unknown	Secondary/Service - overhead	1	2010

Event ID	Feeder(s)	Time Off	Weather	Cause	Classification	CI	Duration (minutes)
		18:54					
7711269	43-12L1	10/29/2012 18:58	Rain - heavy	Tree Fell	Fused branch - overhead	10	709
7713459	42-14L2	10/29/2012 19:00	Rain - light / moderate	Device Failed	Fused branch - overhead	6	2502
7711259	43-12L1	10/29/2012 19:14	Rain - heavy	Tree - Broken Limb	Fused branch - overhead	35	547
7714444	42-9L3	10/29/2012 19:15	Rain - heavy	Device Failed	Fused branch - overhead	7	2843
7713470	42-9L1	10/29/2012 19:56	Rain - heavy	Tree - Broken Limb	Secondary/Service - overhead	1	2439
7714796	42-9L1	10/29/2012 19:56	Rain - heavy	Unknown	Main line - overhead	1	2802
7712688	41-39L2	10/29/2012 20:04	Rain - heavy	Tree Fell	Fused branch - overhead	1	1734
7713040	42-14L3	10/29/2012 20:09	Rain - heavy	Unknown	Main line - overhead	7	2261
7712796	43-12L2	10/29/2012 20:15	Rain - light / moderate	Tree - Broken Limb	Main line - overhead	40	1548
7713107	42-9L3	10/29/2012 20:22	Rain - heavy	Unknown	Main line - overhead	4	2282
7713340	42-9L3	10/29/2012 20:23	Rain - heavy	Tree - Broken Limb	Fused branch - overhead	3	2384
7711214	41-7L2	10/29/2012 20:24	Rain - heavy	Vandalism	Fused branch - overhead	29	410
7711210	41-16L1	10/29/2012 20:24	Rain - heavy	Unknown	Fused branch - overhead	1	409
7711234	41-7L2	10/29/2012 20:24	Rain - heavy	Tree - Broken Limb	Fused branch - overhead	32	421
7711844	43-12L2	10/29/2012 20:30	Rain - light / moderate	Tree Fell	Fused branch - overhead	1	1072
7711458	43-12L2	10/29/2012 20:34	Rain - light / moderate	Tree Fell	Fused branch - overhead	1	828
7711531	41-7L2	10/29/2012 20:38	Rain - light / moderate	Tree Fell	Fused branch - overhead	15	872
7712626	41-7L2	10/29/2012 20:48	Rain - heavy	Tree Fell	Fused branch - overhead	1	1607
7711463	41-16L1	10/29/2012 20:53	Rain - light / moderate	Tree Fell	Fused branch - overhead	6	818
7711233	41-7L2	10/29/2012 21:00	Rain - heavy	Unknown	Fused branch - overhead	29	383
7712628	41-7L2	10/29/2012 21:00	Rain - heavy	Tree Fell	Fused branch - overhead	1	1597
7711236	41-16L1	10/29/2012 21:10	Rain - heavy	Unknown	Fused branch - overhead	1	378
7711282	43-12L1	10/29/2012 21:12	Rain - heavy	Tree - Broken Limb	Fused branch - overhead	1	450
7711321	41-1L1	10/29/2012 21:20	Rain - heavy	Unknown	Fused branch - overhead	2	26
7711457	41-1L1	10/29/2012 21:47	Rain - light / moderate	Tree Fell	Fused branch - overhead	45	708

Event ID	Feeder(s)	Time Off	Weather	Cause	Classification	CI	Duration (minutes)
7714734	42-14L2	10/29/2012 21:54	Rain - light / moderate	Tree - Broken Limb	Secondary/Service - overhead	1	2785
7711465	41-7L1	10/29/2012 21:55	Rain - light / moderate	Tree Fell	Fused branch - overhead	75	765
7711966	41-7L1	10/29/2012 22:08	Rain - light / moderate	Tree - Broken Limb	Fused branch - overhead	1	1048
7712836	41-7L1	10/29/2012 22:31	Rain - light / moderate	Tree - Broken Limb	Fused branch - overhead	18	1869
7711571	41-7L1	10/29/2012 22:41	Rain - light / moderate	Tree Fell	Fused branch - overhead	50	470
7711460	41-16L1	10/29/2012 22:49	Rain - light / moderate	Tree Fell	Fused branch - overhead	3	698
7713875	42-18L4	10/29/2012 23:52	Rain - heavy	Tree Fell	Fused branch - overhead	1	2319
7711595	41-6L3	10/30/2012 00:07	Rain - light / moderate	Tree Fell	Fused branch - overhead	25	709
7712207	41-6L3	10/30/2012 01:03	Rain - light / moderate	Tree Fell	Secondary/Service - overhead	1	1033
7711919	41-7L1	10/30/2012 02:11	Rain - light / moderate	Tree - Broken Limb	Fused branch - overhead	2	803
7712211	41-7L1	10/30/2012 06:13	Rain - light / moderate	Tree - Broken Limb	Secondary/Service - overhead	1	734
7711702	41-16L1	10/30/2012 06:17	Rain - light / moderate	Tree Fell	Fused branch - overhead	1	407
7711449	41-7L2	10/30/2012 06:23	Rain - light / moderate	Tree Fell	Secondary/Service - overhead	3	187
7711469	41-16L1	10/30/2012 07:47	Rain - light / moderate	Tree - Broken Limb	Fused branch - overhead	1	199
7711470	41-16L1	10/30/2012 07:57	Rain - light / moderate	Tree - Broken Limb	Fused branch - overhead	1	190
7712196	41-16L1	10/30/2012 08:03	Rain - light / moderate	Tree Fell	Fused branch - overhead	1	509
7711792	41-7L1	10/30/2012 08:08	Rain - light / moderate	Tree Fell	Fused branch - overhead	5	359
7712768	43-12L2	10/30/2012 08:08	Rain - light / moderate	Tree - Broken Limb	Secondary/Service - overhead	4	1150
7712507	41-11L2	10/30/2012 08:41	Rain - light / moderate	Tree - Broken Limb	Secondary/Service - overhead	1	777
7713151	42-9L3	10/30/2012 09:11	Rain - heavy	Tree Fell	Main line - overhead	1	351
7711910	42-14L2	10/30/2012 09:17	Rain - heavy	Tree Fell	Main line - overhead	684	326
7711466	41-7L1	10/30/2012 09:23	Rain - light / moderate	Tree Fell	Fused branch - overhead	1	80
7712491	43-12L1	10/30/2012 09:35	Rain - heavy	Tree - Broken Limb	Fused branch - overhead	1	690
7713001	43-12L1	10/30/2012 09:36	Rain - light / moderate	Tree Fell	Fused branch - overhead	1	1452
7714094	42-14L3	10/30/2012 09:47	Rain - heavy	Tree - Broken Limb	Fused branch - overhead	1	1022
7712794	42-9L3	10/30/2012	Rain - light /	Unknown	Fused branch - overhead	1	1078

Event ID	Feeder(s)	Time Off	Weather	Cause	Classification	CI	Duration (minutes)
		09:54	moderate				
7711597	41-16L1	10/30/2012 10:08	Rain - light / moderate	Tree Fell	Fused branch - overhead	1	111
7712194	41-7L1	10/30/2012 10:34	Rain - light / moderate	Tree Fell	Fused branch - overhead	1	353
7711704	41-1L1	10/30/2012 10:43	Rain - light / moderate	Tree Fell	Fused branch - overhead	1	158
7713368	42-9L3	10/30/2012 10:52	Rain - heavy	Unknown	Main line - overhead	1	1416
7712001	42-9L1	10/30/2012 11:10	Rain - heavy	Tree Fell	Main line - overhead	161	263
7713540	42-10L1	10/30/2012 11:13	Rain - heavy	Tree - Broken Limb	Fused branch - overhead	1	1458
7714371	42-9L3	10/30/2012 11:32	Rain - heavy	Tree Fell	Fused branch - overhead	3	1981
7713732	42-10L1	10/30/2012 12:10	Rain - heavy	Tree Fell	Fused branch - overhead	1	1561
7713552	42-10L2	10/30/2012 12:20	Rain - heavy	Tree Fell	Fused branch - overhead	1	1417
7713003	42-14L2	10/30/2012 12:36	Rain - heavy	Unknown	Main line - overhead	1	1256
7712370	42-10L2	10/30/2012 12:44	Rain - heavy	Tree - Broken Limb	Fused branch - overhead	117	429
7714184	42-18L4	10/30/2012 13:02	Rain - heavy	Tree - Broken Limb	Secondary/Service - overhead	1	1770
7711826	41-7L1	10/30/2012 13:27	Rain - light / moderate	Tree Fell	Fused branch - overhead	31	62
7712750	41-1L1	10/30/2012 13:47	Rain - heavy	Tree - Broken Limb	Secondary/Service - overhead	1	792
7715317	42-14L3	10/30/2012 13:53	Rain - light / moderate	Tree - Broken Limb	Secondary/Service - overhead	1	2155
7713088	42-10L4	10/30/2012 14:24	Rain - heavy	Unknown	Main line - overhead	1	1198
7712742	43-12L1	10/30/2012 14:46	Rain - heavy	Tree Fell	Secondary/Service - overhead	1	718
7712419	41-16L1	10/30/2012 15:04	Rain - light / moderate	Tree Fell	Fused branch - overhead	1	309
7712629	42-10L4	10/30/2012 15:05	Rain - light / moderate	Tree - Broken Limb	Fused branch - overhead	14	504
7712826	42-10L4	10/30/2012 15:08	Rain - heavy	Unknown	Secondary/Service - overhead	1	854
7712824	42-10L4	10/30/2012 15:14	Rain - heavy	Unknown	Secondary/Service - overhead	1	843
7713273	42-10L1	10/30/2012 15:16	Rain - heavy	Unknown	Main line - overhead	1	1222
7714687	42-14L2	10/30/2012 15:59	Rain - heavy	Unknown	Main line - overhead	1	1677
7713891	42-18L2	10/30/2012 16:10	Rain - heavy	Tree - Broken Limb	Fused branch - overhead	1	1275
7712896	42-9L3	10/30/2012 16:11	Rain - heavy	Tree Fell	Fused branch - overhead	88	844

Event ID	Feeder(s)	Time Off	Weather	Cause	Classification	CI	Duration (minutes)
7713094	42-9L1	10/30/2012 16:24	Rain - heavy	Unknown	Main line - overhead	1	1082
7713383	42-9L3	10/30/2012 17:03	Rain - heavy	Tree - Broken Limb	Main line - overhead	1	1068
7714500	42-14L2	10/30/2012 17:18	Rain - light / moderate	Tree - Broken Limb	Secondary/Service - overhead	1	1542
7714665	42-14L3	10/30/2012 17:23	Rain - heavy	Tree Fell	Fused branch - overhead	8	1651
7712791	42-9L3	10/30/2012 17:31	Rain - light / moderate	Tree Fell	Fused branch - overhead	1	616
7714254	42-14L2	10/30/2012 17:33	Rain - light / moderate	Tree - Broken Limb	Secondary/Service - overhead	3	1524
7713654	42-10L4	10/30/2012 19:19	Rain - heavy	Tree Fell	Fused branch - overhead	1	972
7712769	42-13L1	10/30/2012 19:42	Rain - heavy	Unknown	Secondary/Service - overhead	1	503
7713427	42-13L3	10/30/2012 19:44	Rain - light / moderate	Tree - Broken Limb	Secondary/Service - overhead	1	1002
7712770	42-13L1	10/30/2012 19:53	Rain - heavy	Unknown	Secondary/Service - U/G in duct	1	497
7713131	42-13L3	10/30/2012 19:54	Rain - heavy	Tree - Broken Limb	Transformer	11	886
7713456	42-13L1	10/30/2012 19:59	Rain - heavy	Unknown	Fused branch - overhead	1	906
7712781	42-13L1	10/30/2012 20:34	Rain - heavy	Unknown	Secondary/Service - overhead	1	462
7715110	42-14L2	10/30/2012 21:10	Rain - heavy	Tree Fell	Fused branch - overhead	1	1254
7714071	42-14L3	10/30/2012 21:31	Rain - heavy	Tree - Broken Limb	Transformer	4	1130
7713901	42-14L2	10/30/2012 21:34	Rain - heavy	Device Failed	Secondary/Service - overhead	7	1074
7713867	42-10L2	10/30/2012 21:38	Rain - heavy	Tree - Broken Limb	Fused branch - overhead	1	1031
7714020	42-14L1	10/30/2012 21:50	Rain - heavy	Tree - Broken Limb	Transformer	9	1099
7713542	42-13L2	10/30/2012 23:16	Rain - heavy	Tree - Broken Limb	Transformer	4	829
7713138	42-13L2	10/30/2012 23:24	Rain - light / moderate	Device Failed	Transformer	11	679
7724970	42-14L1	10/30/2012 23:58	Rain - heavy	Tree Fell	Fused branch - overhead	273	763
7714791	42-14L3	10/31/2012 03:58	Rain - heavy	Unknown	Main line - overhead	1	1018
7714402	42-13L3	10/31/2012 06:10	Rain - light / moderate	Tree - Broken Limb	Secondary/Service - overhead	1	727
7715327	42-14L2	10/31/2012 07:51	Rain - heavy	Tree - Broken Limb	Secondary/Service - overhead	1	1116
7715307	42-14L3	10/31/2012 07:55	Rain - heavy	Device Failed	Fused branch - overhead	6	1056
7714505	42-14L2	10/31/2012	Rain - heavy	Tree Fell	Secondary/Service - overhead	1	658

Event ID	Feeder(s)	Time Off	Weather	Cause	Classification	CI	Duration (minutes)
		08:06					
7713932	42-13L3	10/31/2012 08:48	Rain - heavy	Tree - Broken Limb	Secondary/Service - overhead	1	411
7714074	42-13L2	10/31/2012 09:24	Rain - heavy	Tree - Broken Limb	Fused branch - overhead	1	413
7714507	42-14L2	10/31/2012 09:32	Rain - heavy	Tree - Broken Limb	Secondary/Service - overhead	1	576
7713171	41-1L2	10/31/2012 09:32	Rain - light / moderate	Device Failed	Fused branch - overhead	2	84
7713675	42-9L3	10/31/2012 09:39	Rain - heavy	Unknown	Fused branch - overhead	1	186
7714754	42-9L3	10/31/2012 09:50	Rain - heavy	Tree Fell	Secondary/Service - overhead	1	646
7714363	42-13L1	10/31/2012 10:08	Rain - light / moderate	Tree - Broken Limb	Secondary/Service - overhead	1	466
7713455	42-18L4	10/31/2012 10:09	Rain - heavy	Tree - Broken Limb	Secondary/Service - overhead	1	136
7714142	42-13L3	10/31/2012 12:01	Rain - heavy	Tree - Broken Limb	Secondary/Service - overhead	1	378
7714983	42-9L3	10/31/2012 12:02	Rain - heavy	Tree Fell	Fused branch - overhead	1	506
7714740	42-13L1	10/31/2012 12:13	Rain - heavy	Tree Fell	Fused branch - overhead	1	490
7714171	42-13L1	10/31/2012 13:13	Rain - heavy	Tree - Broken Limb	Fused branch - overhead	1	213
7714041	42-14L1	10/31/2012 13:20	Rain - heavy	Tree - Broken Limb	Transformer	8	173
7714241	42-18L2	10/31/2012 14:02	Rain - heavy	Tree - Broken Limb	Fused branch - overhead	1	161
7714135	42-13L1	10/31/2012 14:06	Rain - heavy	Flying Debris	Fused branch - overhead	7	147
7714051	42-14L3	10/31/2012 14:15	Rain - heavy	Tree - Broken Limb	Transformer	6	121
7714786	42-9L3	10/31/2012 14:16	Rain - light / moderate	Under Voltage	Fused branch - overhead	4	388
7714827	42-13L2	10/31/2012 14:34	Rain - heavy	Tree - Broken Limb	Fused branch - overhead	1	404
7715363	42-13L1	10/31/2012 14:45	Rain - heavy	Tree - Broken Limb	Secondary/Service - overhead	1	737
7715271	42-13L2	10/31/2012 15:46	Rain - heavy	Tree - Broken Limb	Secondary/Service - overhead	1	546
7724971	42-14L1	10/31/2012 16:04	Rain - light / moderate	Tree - Broken Limb	Fused branch - overhead	273	27
7714591	42-13L2	10/31/2012 16:33	Rain - heavy	Tree Fell	Secondary/Service - overhead	1	257
7715062	42-18L2	10/31/2012 17:10	Rain - heavy	Tree Fell	Fused branch - overhead	1	383
7714614	42-13L2	10/31/2012 17:33	Rain - heavy	Device Failed	Secondary/Service - overhead	1	219
7715429	42-18L4	10/31/2012 20:20	Rain - heavy	Tree - Broken Limb	Secondary/Service - overhead	1	452

Event ID	Feeder(s)	Time Off	Weather	Cause	Classification	CI	Duration (minutes)
7715217	41-39L2	10/31/2012 21:00	Rain - heavy	Device Failed	Transformer	3	60
7716782	42-14L1	10/31/2012 21:11	Rain - heavy	Tree - Broken Limb	Secondary/Service - overhead	1	1056
7715279	42-9L2	10/31/2012 21:19	Rain - heavy	Tree - Broken Limb	Secondary/Service - overhead	1	196
7715325	42-14L2	10/31/2012 21:30	Rain - heavy	Device Failed	Fused branch - overhead	1	285

Granite State Electric Company
d/b/a Liberty Utilities

October 29, 2012 Hurricane Sandy
Total O&M Restoration Costs

Incurred July 3, 2012 Through December 31, 2012¹

Line No.	Description	Total Restoration Costs
1	Payroll charges excluding payroll overheads for GSE employees	\$ 419,817
2	Charges for transportation on GSE vehicles	11,523
3	Charges from outside companies	1,183,372
4	Charges for materials and supplies	8,675
5	Charges for employee expenses	5,065
6	Charges for other	-
7	Total	\$ 1,628,452
8	Less Fairpoint Communications Billing	-
9	Total Amount Charged to Storm Fund	<u>\$ 1,628,452</u>

Note ¹ - Liberty Utilities acquired Granite State Electric Company as of July 3, 2012

Granite State Electric Company
d/b/a Liberty Utilities
O&M Restoration Costs associated with October 2012 Hurricane Sandy

Line No.	Outside Companies	Oct-2012 (a)	Nov-2012 (b)	Dec-2012 (c)	Amount (e)
1	K&M Utility Lines LTD			\$ 654,724	\$ 654,724
2	Harlan Electric			202,601	202,601
3	Lucas Tree Experts		114,924	3,680	118,603
4	Asplund Tree Expert Co.		33,745	70,121	103,865
5	SIAC			31,003	31,003
6	Holiday Inn Salem NH			29,874	29,874
7	Vendors < \$10,000		8,110	34,593	42,703
8	Subtotal Outside Companies	\$ -	\$ 156,778	\$ 1,026,594	\$ 1,183,372
9	Company Payroll	265,757	12,386	141,674	419,817
10	Transportation		636	10,887	11,523
11	Materials & Supplies		6,201	2,474	8,675
12	Employee Expenses	913	1,494	2,657	5,065
13	Other				-
14	Total O&M Restoration Costs	\$ 266,670	\$ 177,496	\$ 1,184,286	\$ 1,628,452
15	Less Fairpoint Communications Billing	-	-	-	-
16	Amount Charged to Storm Fund	<u>\$ 266,670</u>	<u>\$ 177,496</u>	<u>\$ 1,184,286</u>	<u>\$ 1,628,452</u>