

Deleted: Seventh
 Deleted: Sixth

	<u>Page</u>
ELECTRICITY CONSUMPTION TAX.....	34
CONSERVATION AND LOAD MANAGEMENT ADJUSTMENT	74
SYSTEM BENEFITS CHARGE PROVISION.....	77
DISTRIBUTION SURCHARGE PROVISION	78
TRANSMISSION SERVICE COST ADJUSTMENT PROVISION	79
STRANDED COST ADJUSTMENT PROVISION.....	80
SAVINGS CREDIT ADJUSTMENT PROVISION	81
TRANSITION SERVICE COST ADJUSTMENT PROVISION	82
ELECTRIC SERVICE ADJUSTMENT PROVISION	83
SUMMARY OF RATES IN EFFECT	84
ELECTRIC ASSISTANCE PROGRAM PROVISION	86
DEFAULT SERVICE ADJUSTMENT PROVISION	87
LOAD RESPONSE PROGRAM PROVISION.....	88
OPTIONAL ENHANCED METERING SERVICE PROVISION	89
OPTIONAL INTERVAL DATA SERVICE PROVISION.....	90
OPTIONAL BILLING AND RATE DATA SERVICE PROVISION	91
OFF CYCLE METER READ FOR SWITCH OF SUPPLIER PROVISION	92
DEFAULT SERVICE COST RECLASSIFICATION ADJUSTMENT PROVISION	93
<u>INTERCONNECTION STANDARDS PROVISION.....</u>	<u>95</u>

RATE SCHEDULES

Symbol

Domestic Service	D	35
Domestic-Optional Peak Load Pricing	D-10	40
General Service Time-of-Use	G-1	44
General Long-Hour Service	G-2	50
General Service	G-3	55
Outdoor Lighting Service	M	59
Limited Total Electric Living	T	65
Unmetered Electric Service	U	69
Limited Commercial Space Heating	V	70

Issued: December 30, 2008

Issued by: /s/ Thomas B. King

Effective: January 1, 2009

Title: Thomas B. King
President

(Issued in Compliance with Order No. 24,893 in Docket No. DE 06-061 dated September 15, 2008)

Deleted: ¶
 Deleted: March 29, 2006
 Deleted: Cheryl A. LaFleur
 Deleted: Cheryl A. LaFleur
 Deleted: May 1, 2006
 Deleted: 24,609
 Deleted: 05-126
 Deleted: March 28, 2006

	<u>Page</u>
ELECTRICITY CONSUMPTION TAX.....	34
CONSERVATION AND LOAD MANAGEMENT ADJUSTMENT	74
SYSTEM BENEFITS CHARGE PROVISION.....	77
DISTRIBUTION SURCHARGE PROVISION	78
TRANSMISSION SERVICE COST ADJUSTMENT PROVISION	79
STRANDED COST ADJUSTMENT PROVISION.....	80
SAVINGS CREDIT ADJUSTMENT PROVISION	81
TRANSITION SERVICE COST ADJUSTMENT PROVISION	82
ELECTRIC SERVICE ADJUSTMENT PROVISION	83
SUMMARY OF RATES IN EFFECT	84
ELECTRIC ASSISTANCE PROGRAM PROVISION	86
DEFAULT SERVICE ADJUSTMENT PROVISION	87
LOAD RESPONSE PROGRAM PROVISION.....	88
OPTIONAL ENHANCED METERING SERVICE PROVISION	89
OPTIONAL INTERVAL DATA SERVICE PROVISION.....	90
OPTIONAL BILLING AND RATE DATA SERVICE PROVISION.....	91
OFF CYCLE METER READ FOR SWITCH OF SUPPLIER PROVISION	92
DEFAULT SERVICE COST RECLASSIFICATION ADJUSTMENT PROVISION.....	93
INTERCONNECTION STANDARDS PROVISION.....	95

RATE SCHEDULES

Symbol

Domestic Service	D	35
Domestic-Optional Peak Load Pricing	D-10	40
General Service Time-of-Use	G-1	44
General Long-Hour Service	G-2	50
General Service	G-3	55
Outdoor Lighting Service	M	59
Limited Total Electric Living	T	65
Unmetered Electric Service	U	69
Limited Commercial Space Heating	V	70

Issued: December 30, 2008

Issued by: /s/ Thomas B. King

Effective: January 1, 2009

Thomas B. King
President

(Issued in Compliance with Order No. 24,893 in Docket No. DE 06-061 dated September 15, 2008)

GRANITE STATE ELECTRIC COMPANY
INTERCONNECTION STANDARDS PROVISION
FOR INVERTERS SIZED UP TO 100 KVA

Any person or entity planning to operate a generating facility connected to the Company's facilities must receive approval from the Company prior to connecting the generating facility to the Company's facilities. A generating facility is any device producing electric energy which can range in size from a small residential photovoltaic solar installation to a large commercial generating facility. Inverter-based generating facilities sized up to 100 kVA must meet the standards of this Interconnections Standards Provision. For all other generating facilities, the Company must be contacted for site specific requirements prior to interconnecting the generating facilities with the Company's facilities.

TABLE OF CONTENTS

	<u>Page</u>
1.0 Introduction.....	96
1.1 Applicability.....	96
1.2 Definitions.....	96
1.3 Forms and Agreements.....	98
2.0 Basic Understandings.....	98
3.0 Process Overview.....	99
3.1 Simplified Process.....	100
3.2 Time Frames.....	101
3.3 Fees.....	101
Figure 1 - Inverter Based Simplified Interconnection Process.....	102
Figure 2 – Simplified Interconnections to Networks.....	103
Table 1 – Time Frames (Note 1).....	105
Exhibit A – Simplified Process Interconnection Application.....	106
Exhibit B – Certificate of Completion for Simplified Process Interconnections.....	111
Exhibit C – Supplemental Review Agreement.....	112

Issued: December 30, 2008

Issued by: /s/ Thomas B. King

Effective: January 1, 2009

Thomas B. King
Title: President

(Issued in Compliance with Order No. 24,893 in Docket No. DE 06-061 dated September 15, 2008)

GRANITE STATE ELECTRIC COMPANY
INTERCONNECTION STANDARDS PROVISION
FOR INVERTERS SIZED UP TO 100 KVA

1.0 Introduction

1.1 Applicability

This document ("Interconnection Standard") describes the process and requirements for an Interconnecting Customer to connect a Listed inverter based Facility sized up to 100 kVA to the Company's Electric Power System ("Company EPS"), including discussion of technical and operating requirements, and other matters. Non-inverter based Facilities will need to follow the standard interconnection procedures.

If the Facility will always be isolated from the Company's EPS, (i.e., it will never operate in parallel to the Company's EPS), then this Interconnection Standard does not apply.

1.2 Definitions

The following words and terms shall be understood to have the following meanings when used in this Interconnection Standard:

Affiliate: A person or entity controlling, controlled by or under common control with a Party.

Anti-Islanding: Describes the ability of a Facility to avoid unintentional islanding through some form of active control technique.

Application: The notice provided by the Interconnecting Customer to the Company in the form shown in Exhibit A, which initiates the interconnection process.

Area Network Distribution System: Electrical service from an EPS consisting of one or more primary circuits from one or more substations or transmission supply points arranged such that they collectively feed secondary circuits serving more than one Interconnecting Customer.

Commission: The New Hampshire Public Utilities Commission.

Company: Granite State Electric Company.

Customer: Company's retail customer; host site or premises, may be the same as Interconnecting Customer.

EPS: The electric power system owned, controlled or operated by the Company used to provide distribution service to its Customers.

Facility: A source of electricity that is located on the Customer's side of the point of common coupling, and all facilities ancillary and appurtenant thereto, including interconnection equipment, which the Interconnecting Customer requests to interconnect to the Company EPS.

In-Service Date: The date on which the Facility and System Modifications (if applicable) are complete and ready for service, even if the Facility is not placed in service on or by that date.

Issued: December 30, 2008

Issued by: /s/ Thomas B. King

Effective: January 1, 2009

Thomas B. King
Title: President

(Issued in Compliance with Order No. 24,893 in Docket No. DE 06-061 dated September 15, 2008)

GRANITE STATE ELECTRIC COMPANY
INTERCONNECTION STANDARDS PROVISION
FOR INVERTERS SIZED UP TO 100 KVA

Interconnecting Customer: Entity that takes electric service from the Company who has or will obtain legal authority to enter into agreements regarding the interconnection of the Facility to the Company EPS.

Interconnection Service Agreement: An agreement for interconnection service, the form of which is provided in Exhibit A, between the Interconnecting Customer and the Company.

Islanding: A situation where electrical power remains in a portion of an electrical power system when the Company's transmission or distribution system has ceased providing power for whatever reason (emergency conditions, maintenance, etc.). Unintentional Islanding, especially past the PCC, is to be strictly avoided.

Isolated: The state of operating the Facility when electrically disconnected from the Company EPS on the Interconnecting Customer's side of the PCC.

Listed: A Facility that has been tested and certified by a nationally recognized testing laboratory to comply with all requirements in UL Standard 1741.1 dated May, 2007 or later.

Net Metering: A customer of the Company with a renewable on-site Facility of 100 kilovolt-amperes ("kVA") or less in size exercising the option to run the meter backward and thus choosing to receive a credit from the Company where in any month during which there was a positive net difference between kilowatt hours generated and consumed, the credit will equal the positive net difference. This credit is then used by the Customer in subsequent billing periods, until exhausted before purchasing energy from the Company.

Non-Islanding: Describes the ability of a Facility to avoid unintentional islanding through the operation of its interconnection equipment.

Parallel: The state of operating the Facility when electrically connected to the Company EPS (sometimes known as grid-parallel).

Parties: The Company and the Interconnecting Customer.

Point of Common Coupling (PCC): The point where the Interconnecting Customer's local electric power system connects to the Company EPS, such as the electric power revenue meter or premises service transformer. See the Company for the location at a particular Interconnecting Customer site.

Radial Distribution Circuit: Electrical service from an EPS consisting of one primary circuit extending from a single substation or transmission supply point arranged such that the primary circuit serves Interconnecting Customers in a particular local area.

Screen(s): Criteria by which the Company will determine if a proposed Facility's installation will adversely impact the Company EPS in the Simplified Processes as set forth in Section 3.0.

Simplified Process: As described in Section 3.1, process steps from initial application to final written authorization for certain Listed inverter-based Facilities of limited scale and minimal apparent grid impact.

Issued: December 30, 2008

Issued by: /s/ Thomas B. King

Effective: January 1, 2009

Thomas B. King
Title: President

(Issued in Compliance with Order No. 24,893 in Docket No. DE 06-061 dated September 15, 2008)

GRANITE STATE ELECTRIC COMPANY
INTERCONNECTION STANDARDS PROVISION
FOR INVERTERS SIZED UP TO 100 KVA

Spot Network Distribution System: Electrical service from an EPS consisting of one or more primary circuits from one or more substations or transmission supply points arranged such that they collectively feed secondary circuits serving only one Interconnecting Customer.

Supplemental Review: Additional engineering study to evaluate the potential impact of Facilities over 10 kVA on the Company EPS so as to determine any requirements for processing the application, or Facilities of 10 kVA or smaller that fail one of the Simplified Process screens. This review is charged at a cost of \$125.00 per hour up to a limit of 10 hours. If Company services are needed to install temporary metering to complete the Supplemental Review, then these charges will also be included as part of the overall review.

System Modification: Modifications or additions to distribution-related Company facilities that are integrated with the Company EPS for the benefit of the Interconnecting Customer and paid for by the Interconnecting Customer.

Unintentional Islanding: A situation where the electrical power from the Facility continues to supply a portion of the Company EPS past the PCC when the Company's transmission or distribution system has ceased providing power for whatever reason (emergency conditions, maintenance, etc.).

Witness Test: The Company's right to witness the commissioning testing. Commissioning testing is defined in IEEE Standard 1547-2003.

1.3 Forms and Agreements

The following documents for the interconnection process are included as Exhibits:

1. Application forms:
 - a. Simplified Process (Facilities meeting the requirements of Section 3.1) application form and service agreement (Exhibit A)
 - b. Certificate of Completion (Exhibit B)
2. Supplemental Review Agreement for those projects which have failed one or more screens in the Simplified Process (Exhibit C).

2.0 Basic Understandings

Interconnecting Customer intends to install a Listed inverter based Facility on the Customer's side of the PCC that will be connected electrically to the Company EPS and operate in parallel, synchronized with the voltage and frequency maintained by the Company during all operating conditions. It is the responsibility of the Interconnecting Customer to design, procure, install, operate, and maintain all necessary equipment on its property for connection to the Company EPS. The Interconnecting Customer and the Company shall enter into a Simplified Process Application and Interconnection Service Agreement to provide for parallel operation of an Interconnecting Customer's Facility with Company EPS. A form of this agreement is attached as Exhibit A to this Interconnection Standard.

The equipment, controls and other facilities that together constitute the interconnection of the Facility with the Company EPS must be reviewed for potential impact on the Company EPS under the process described in Section 3.0.

Issued: December 30, 2008

Issued by: /s/ Thomas B. King

Effective: January 1, 2009

Thomas B. King

Title: President

(Issued in Compliance with Order No. 24,893 in Docket No. DE 06-061 dated September 15, 2008)

GRANITE STATE ELECTRIC COMPANY
INTERCONNECTION STANDARDS PROVISION
FOR INVERTERS SIZED UP TO 100 KVA

The Interconnecting Customer should consult the Company before designing, purchasing and installing any generation equipment, in order to verify the nominal utilization voltages, frequency, and phase characteristics of the service to be supplied, the capacity available, and the suitability of the proposed equipment for operation at the intended location. Attempting to operate a Facility at other than its nameplate characteristics may result in unsatisfactory performance or, in certain instances, injury to personnel and/or damage to equipment. The Interconnecting Customer will be responsible for ascertaining from the Company, and the Company will cooperate in providing, the service characteristics of the Company EPS at the proposed PCC. The Company will in no way be responsible for damages sustained as a result of the Interconnecting Customer's failure to ascertain the service characteristics at the proposed PCC.

The Facility should operate in such a manner that does not compromise, or conflict with, the safety or reliability of the Company EPS. The Interconnecting Customer should design its equipment in such a manner that faults or other disturbances on the Company EPS do not cause damage to the Interconnecting Customer's equipment.

Authorization to interconnect will be provided once the Interconnecting Customer has met all terms of the interconnection process as outlined below.

This Interconnection Standard does not cover general distribution service needed to serve the Interconnecting Customer. Please refer to the Company's Terms and Conditions for Distribution Service. This Interconnection Standard does not cover the use of the distribution system to export power, or the purchase of excess power.

3.0 Process Overview

This application process is for Listed inverter-based Facilities with a power rating of 100 kVA or less depending on the service configuration, and located on radial EPSs under certain conditions. A Listed inverter-based Facility with a power rating of 10 kVA or less single-phase located on a spot network EPS under certain conditions would also be eligible.

Listed inverter based interconnections are intended to be reviewed promptly under a Simplified Process. A set of review screens have been developed to determine if the application fits the Simplified Process and are described below and detailed in Figures 1 and 2 with their accompanying notes. Table 1 describes the timelines for these paths. Unless otherwise noted, all times in the Interconnection Standard reference Company business days under normal work conditions.

A project that fails to meet the Simplified review screens will be addressed using the Company's standard interconnection review practices. In cases where the Facility is larger than 10 kVA, a Supplemental Review will be conducted. In addition a Supplemental Review may be required which may allow an interconnection of 10 kVA or smaller to be accommodated at a particular site even though it did not pass the Simplified review screens. In these instances, the Company will provide an estimated cost to do a Supplemental Review to the Interconnecting Customer. If the Interconnecting Customer funds the Supplemental Review, the Company will undertake the review to determine which of the following apply:

Issued: December 30, 2008

Issued by: /s/ Thomas B. King

Effective: January 1, 2009

Thomas B. King
Title: President

(Issued in Compliance with Order No. 24,893 in Docket No. DE 06-061 dated September 15, 2008)

GRANITE STATE ELECTRIC COMPANY
INTERCONNECTION STANDARDS PROVISION
FOR INVERTERS SIZED UP TO 100 KVA

- No system modifications are required and the simplified process can be used.
- System modifications are required at the Customer's expense before the simplified process can be used. A statement will be sent to the Customer describing the required modification and a bill for the estimated amount.
- The simplified process cannot be used and the Customer must reapply using the Company's standard interconnection process.

All proposed new sources of electric power that plan to operate in parallel with the Company EPS must submit a completed application to the Company within the Company's franchise territory where the Facility will be located. The Interconnecting Customer will be notified of the application's completeness. Interconnecting Customers proposing to interconnect on area networks require a detailed review of the planned interconnection and do not qualify for the Simplified Process. All applications from other Interconnecting Customers must proceed through a series of screens to determine if they meet the requirements for the Simplified Process interconnection path.

3.1 Simplified Process

Interconnecting Customers using Listed single-phase inverter-based Facilities with power ratings of 100 kVA or less at locations receiving single-phase service from a single-phase transformer, or using Listed three-phase inverter-based Facilities with power ratings of 100 kVA or less at locations receiving three-phase service from a three-phase transformer configuration, and requesting an interconnection on radial EPSs where the aggregate Facility capacity on the circuit is less than 7.5% of circuit annual peak load qualify for Simplified interconnection.

The Simplified Process is as follows:

- a. Application process:
 - i. Interconnecting Customer submits a Simplified Process application filled out properly and completely (Exhibit A).
 - ii. Company evaluates the application for completeness and notifies the Interconnecting Customer within 10 business days of receipt that the application is or is not complete and, if not, advises what is missing.
- b. Company verifies Facility equipment passes screens 1, 2, and 3 in Figure 1 if a radial EPS, or the screens in Figure 2 if a spot network EPS.
- c. If approved, the Company signs the application approval line and returns the approved application to the Interconnecting Customer. In certain circumstances, the Company may require the Interconnecting Customer to pay for System Modifications before the application is approved. If so, a description of work and an estimate of the cost will be sent back to the Interconnecting Customer for approval. The Interconnecting Customer would then approve via a signature and submit payment for any System Modifications. If the Interconnecting Customer approves, the Company performs the System Modifications. Then, the Company signs the application approval line and sends to the Interconnecting Customer.

Issued: December 30, 2008

Issued by: /s/ Thomas B. King

Effective: January 1, 2009

Thomas B. King
Title: President

(Issued in Compliance with Order No. 24,893 in Docket No. DE 06-061 dated September 15, 2008)

GRANITE STATE ELECTRIC COMPANY
INTERCONNECTION STANDARDS PROVISION
FOR INVERTERS SIZED UP TO 100 KVA

- d. The Interconnecting Customer returns Certificate of Completion to the Company.
- e. Following receipt of the Certificate of Completion, the Company may inspect the Facility for compliance with standards by arranging for a Witness Test. The Interconnecting Customer has no right to operate in parallel until a Witness Test has been performed or has been previously waived by the Company on the Application Form. If the Company elects to conduct a Witness Test, every attempt will be made to conduct it within 10 business days of the receipt of the Certificate of Completion. All projects larger than 10 kVA will need to be witness tested, unless waived by the Company.
- f. Assuming the wiring inspection and/or Witness Test is satisfactory, the Company notifies the Interconnecting Customer in writing that interconnection is authorized. If the Witness Test is not satisfactory, the Company has the right to disconnect the Facility, and will provide information to the Interconnecting Customer describing clearly what is required for approval.

If the Interconnecting Customer does not substantially complete construction within 12 months after receiving application approval from the Company, the Company will require the Interconnecting Customer to reapply for interconnection.

3.2 Time Frames

Unless otherwise noted, all days in the Interconnection Standard reference Company business days under normal work conditions.

Table 1 lays out the maximum timeframes allowed under the Simplified Review process. The maximum time allowed for the Company to execute the entire Simplified Process is 20 days.

3.3 Fees

There are no fees for those Facilities that qualify for the Simplified Process on a radial EPS (except in certain cases where a System Modification would be needed for which the Interconnecting Customer would pay).

In cases where the Facility is larger than 10 kVA, or does not pass the other screens, a Supplemental Review will be conducted. In these instances, the Company will provide a cost estimate to do a Supplemental Review to the Interconnecting Customer. This review is charged at a cost of \$125.00 per hour. If Company services are needed to install temporary metering to complete the Supplemental Review, then these charges will also be included as part of the overall review.

Issued: December 30, 2008

Issued by: /s/ Thomas B. King

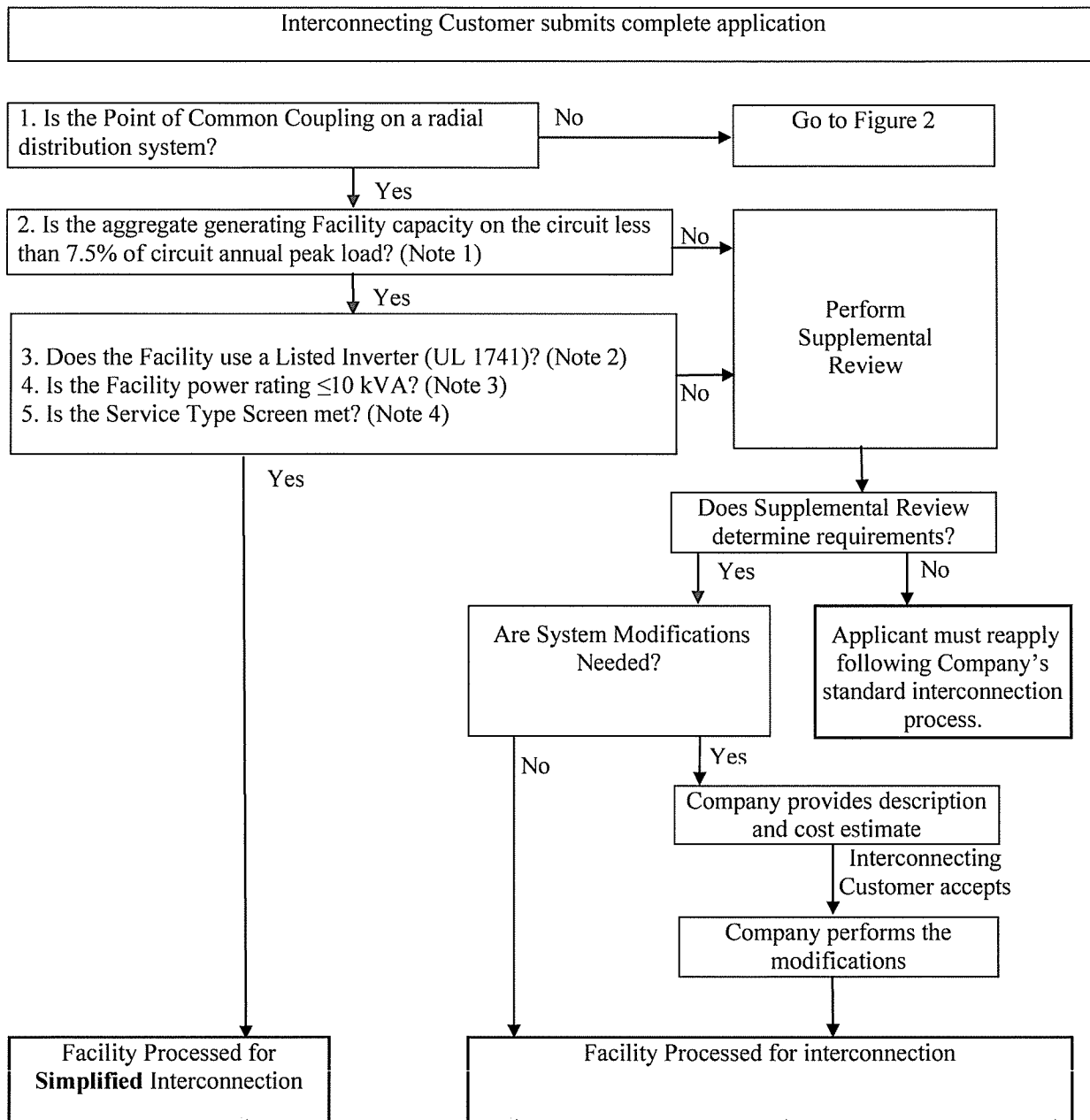
Effective: January 1, 2009

Thomas B. King
Title: President

(Issued in Compliance with Order No. 24,893 in Docket No. DE 06-061 dated September 15, 2008)

GRANITE STATE ELECTRIC COMPANY
 INTERCONNECTION STANDARDS PROVISION
 FOR INVERTERS SIZED UP TO 100 KVA

Figure 1 – Inverter Based Simplified Interconnection Process



Issued: December 30, 2008

Issued by: /s/ Thomas B. King

Effective: January 1, 2009

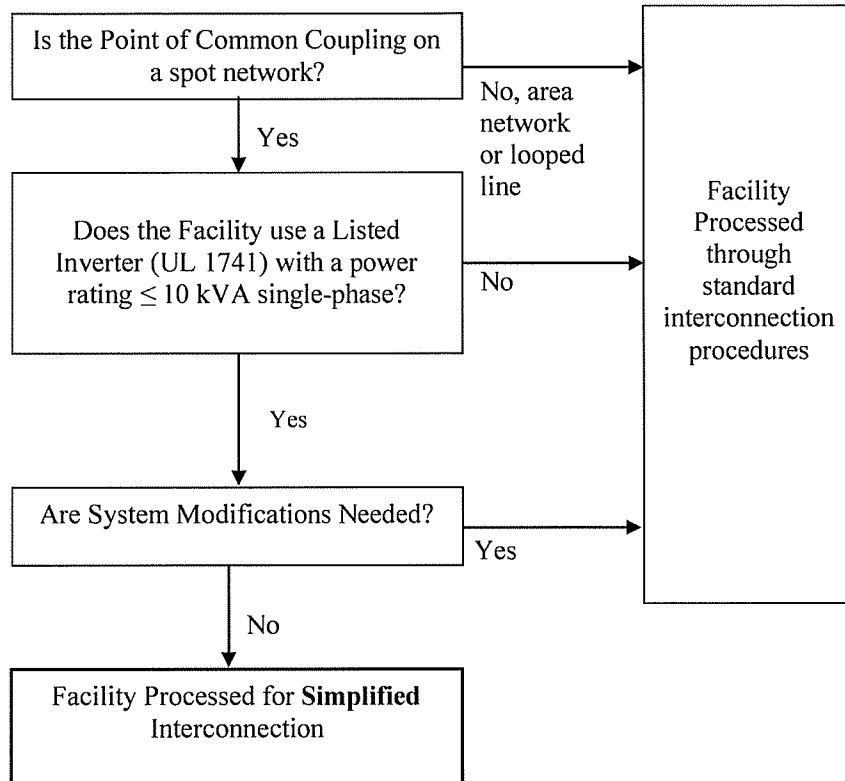
Thomas B. King

Title: President

(Issued in Compliance with Order No. 24,893 in Docket No. DE 06-061 dated September 15, 2008)

GRANITE STATE ELECTRIC COMPANY
INTERCONNECTION STANDARDS PROVISION
FOR INVERTERS SIZED UP TO 100 KVA

Figure 2 – Simplified Interconnection to Networks



Issued: December 30, 2008

Issued by: /s/ Thomas B. King

Effective: January 1, 2009

Title: Thomas B. King
President

(Issued in Compliance with Order No. 24,893 in Docket No. DE 06-061 dated September 15, 2008)

GRANITE STATE ELECTRIC COMPANY
INTERCONNECTION STANDARDS PROVISION
FOR INVERTERS SIZED UP TO 100 KVA

Explanatory Notes to Accompany Figure 1

Note 1. On a typical radial distribution EPS circuit (“feeder”) the annual peak load is measured at the substation circuit breaker, which corresponds to the supply point of the circuit. A circuit may also be supplied from a tap on a higher-voltage line, sometimes called a sub-transmission line. On more complex radial EPSs, where bidirectional power flow is possible due to alternative circuit supply options (“loop service”), the normal supply point is the loop tap.

Note 2. New Hampshire has adopted UL1741 (Inverters, Converters and Charge Controllers for Use in Independent Power Systems) as an acceptable standard for power systems to comply with IEEE Std 1547 and 1547.1. Equipment listed to UL1741 by a nationally recognized testing laboratory will be considered in compliance with IEEE Std 1547 and 1547.1. An Interconnecting Customer should contact the Facility supplier(s) to determine if it’s equipment has been listed to either of these standards.

Note 3. Facilities with a power rating above 10 kVA will be required to install a fully rated, lockable disconnect switch. The disconnect switch will be located near the service entrance for use by utility personnel.

Note 4. This screen includes a review of the type of electrical service provided to the Interconnection Customer, including the service transformer configuration and service type to limit the potential for creating unacceptable voltage imbalance, over-voltage or under-voltage conditions, or service equipment overloads on the Company EPS due to a mismatch between the size and phasing of the energy source, the service loads fed from the service transformer(s), and the service equipment ratings.

To be eligible for the Simplified Process, a Listed inverter-based Facility must be either (1) a single-phase unit on a customer’s local EPS receiving single-phase secondary service at the PCC from a single-phase service transformer, or (2) a three-phase unit on a customer’s local EPS receiving three-phase secondary service at the PCC from a three-phase transformer configuration.

If the proposed Facility is single-phase and is to be interconnected on a center tap neutral of a 240 volt service, its addition will not create an imbalance between the two sides of the 240 volt service of more than 20% of nameplate rating of the service transformer.

Issued: December 30, 2008

Issued by: /s/ Thomas B. King

Effective: January 1, 2009

Thomas B. King
Title: President

(Issued in Compliance with Order No. 24,893 in Docket No. DE 06-061 dated September 15, 2008)

GRANITE STATE ELECTRIC COMPANY
 INTERCONNECTION STANDARDS PROVISION
 FOR INVERTERS SIZED UP TO 100 KVA

Table 1 – Time Frames

Review Process	Simplified	Simplified Spot Network
Eligible Facilities	Listed Small Inverter	Listed Inverter \leq 10 kVA single-phase
Review Application for completeness	10 days	10 days
Complete Review of all screens	10 days	Site review 30 days if load is known or can be estimated 90 days if load has to be metered
Complete Supplemental Review (if needed) – Note 1		
Total Maximum Days	20 days	100 days
Notice/ Witness Test	< 1 day with 10 day notice or by mutual agreement	1 day with 10 day notice or by mutual agreement
Send Approval to Interconnector		

NOTE 1: When a Supplemental Review is involved, the timelines for a Simplified Process no longer apply. However, the Company will complete the Supplemental Review within 40 days.

Issued: December 30, 2008

Issued by: /s/ Thomas B. King

Effective: January 1, 2009

Thomas B. King
 Title: President

(Issued in Compliance with Order No. 24,893 in Docket No. DE 06-061 dated September 15, 2008)

GRANITE STATE ELECTRIC COMPANY
INTERCONNECTION STANDARDS PROVISION
FOR INVERTERS SIZED UP TO 100 KVA

Exhibit A – Simplified Process Interconnection Application
Instructions *(please do not submit this page)*

General Information: If you, the Interconnecting Customer, wish to submit an application to interconnect your generating Facility using the Simplified Process (reference Section 3.1 of the Interconnection Standard for eligibility) please fill out the attached application form completely (not including this page of instructions), including your signature in the space provided. Interconnections that may be eligible for this Simplified Process include UL 1741-Listed inverter-based Facilities that are either (1) connecting to radial electric power systems with power ratings of ≤ 100 kVA, or (2) connecting to spot network electric power systems with power ratings of ≤ 10 kVA single-phase. Please attach any documentation provided by the inverter manufacturer concerning the UL 1741. Facilities larger than 10 kVA will be required to install a fully rated lockable switch near the service entrance for use by utility personnel.

Mail all material to: COMPANY SPECIFIC ADDRESS

The Simplified Process is as follows:

1. Application process:
 - a. Interconnecting Customer submits a Simplified Application filled out properly and completely.
 - b. Company evaluates the application for completeness and notifies the Interconnecting Customer within 10 business days of receipt that the application is or is not complete and, if not, advises what is missing.
2. Company verifies Facility equipment can be interconnected safely and reliably.
3. If approved, the Company signs the application and returns a copy to the Interconnecting Customer.
4. Upon receipt of the signed application, the Interconnecting Customer installs the Facility. Then the Interconnecting Customer arranges for inspection of the completed installation by the local electrical wiring inspector, or other authority having jurisdiction, and this person signs the Certificate of Completion. If the Facility was installed by an electrical contractor, this person also fills out the Certificate of Completion.
5. In certain circumstances, the Company will require the Interconnecting Customer to pay for System Modifications. If so, a description of work and an estimate will be sent back to the Interconnecting Customer for approval. The Interconnecting Customer would then approve via a signature and payment for the System Modifications. If the Interconnecting Customer approves, the Company performs the System Modifications. Then, the Company signs the application and sends the approved application back to the Interconnecting Customer.
6. The Interconnecting Customer returns the Certificate of Completion to the Company.
7. Following receipt of the Certificate of Completion, the Company may inspect the Facility for compliance with standards by arranging for a Witness Test. Except for a short test by the installer to confirm the system works properly, the Interconnecting Customer has no right to operate in parallel (interconnect) until a Witness Test has been performed or has been previously waived by the Company on the Application Form. The Company is will make every attempt to complete this Witness Test within 10 business days of its receipt of the Certificate of Completion. All projects larger than 10 kVA will need to be witness tested, unless waived by the Company.

Issued: December 30, 2008

Issued by: /s/ Thomas B. King

Effective: January 1, 2009

Thomas B. King
Title: President

(Issued in Compliance with Order No. 24,893 in Docket No. DE 06-061 dated September 15, 2008)

GRANITE STATE ELECTRIC COMPANY
INTERCONNECTION STANDARDS PROVISION
FOR INVERTERS SIZED UP TO 100 KVA

Exhibit A – Simplified Process Interconnection Application (Continued)

8. Assuming the wiring inspection and/or Witness Test is satisfactory, the Company notifies the Interconnecting Customer in writing that interconnection is authorized. If the Witness Test is not satisfactory, the Company has the right to disconnect the Facility, and will provide information to the Interconnecting Customer describing clearly what is required for approval.

Contact Information: You must provide the contact information for the legal applicant (i.e. the Interconnecting Customer). If other parties are responsible for interfacing with the Company, you should provide their contact information as well.

Ownership Information: Please enter the legal names of the owner or owners of the Facility.

Generating Facility Information: Please consult an actual electric bill from the Electric Service Company and enter the correct Account Number and meter number on this application. If the facility is to be installed in a new location, a temporary number may be assigned by the Electric Company.

Confidentiality: Information on this form will be shared with the Commission and other State Agencies as required.

UL 1741 Listed? The standard UL 1741.1 dated May, 2007 or later, “Inverters, Converters, and Controllers for Use in Independent Power Systems,” addresses the electrical interconnection design of various forms of generating equipment. Many manufacturers choose to submit their equipment to a Nationally Recognized Testing Laboratory (NRTL) that verifies compliance with UL 1741.1. This term “Listed” is then marked on the equipment and supporting documentation.

Issued: December 30, 2008

Issued by: /s/ Thomas B. King

Effective: January 1, 2009

Thomas B. King
Title: President

(Issued in Compliance with Order No. 24,893 in Docket No. DE 06-061 dated September 15, 2008)

GRANITE STATE ELECTRIC COMPANY
INTERCONNECTION STANDARDS PROVISION
FOR INVERTERS SIZED UP TO 100 KVA

Simplified Process Interconnection Application and Service Agreement

Contact Information: Date Prepared: _____
Legal Name and address of Interconnecting Customer (or, Company name, if appropriate)
Customer or Company Name (print): _____ Contact Person, if Company: _____
Mailing Address: _____
City: _____ State: _____ Zip Code: _____
Telephone (Daytime): _____ (Evening): _____
Facsimile Number: _____ E-Mail Address: _____

Alternative Contact Information (e.g., system installation contractor or coordinating company, if appropriate):
Name: _____
Mailing Address: _____
City: _____ State: _____ Zip Code: _____
Telephone (Daytime): _____ (Evening): _____
Facsimile Number: _____ E-Mail Address: _____

Electrical Contractor Contact Information (if appropriate):
Name: _____ Telephone: _____
Mailing Address: _____
City: _____ State: _____ Zip Code: _____

Facility Information:
Address of Facility: _____
City: _____ State: _____ Zip Code: _____
Electric Service Company: _____ Account Number: _____ Meter Number: _____
Inverter Manufacturer: _____ Model Name and Number: _____ Quantity: _____
Nameplate Rating: _____ (kW) _____ (kVA) _____ (AC Volts) Single _____ or Three _____ Phase
System Design Capacity: _____ (kVA) _____ (kVA)
Net Metering: If Renewably Fueled, will the account be Net Metered? Yes _____ No _____
Prime Mover: Photovoltaic Reciprocating Engine Fuel Cell Turbine Other _____
Energy Source: Solar Wind Hydro Diesel Natural Gas Fuel Oil Other _____
UL 1741.1 (IEEE 1547.1) Listed? Yes _____ No _____
Estimated Install Date: _____ Estimated In-Service Date: _____

Customer Signature

I hereby certify that, to the best of my knowledge, all of the information provided in this application is true and I agree to the Terms and Conditions on the following page:

Interconnecting Customer Signature: _____ Title: _____ Date: _____

Please attach any documentation provided by the inverter manufacturer describing the inverter's UL 1741 listing.

Approval to Install Facility (For Company use only)

Installation of the Facility is approved contingent upon the terms and conditions of this Agreement, and agreement to any system modifications, if required (Are system modifications required? Yes ___ No ___ To be Determined ___):

Company Signature: _____ Title: _____ Date: _____

Company waives inspection/Witness Test? Yes ___ No ___

Issued: December 30, 2008

Issued by: /s/ Thomas B. King

Thomas B. King

Effective: January 1, 2009

Title: President

(Issued in Compliance with Order No. 24,893 in Docket No. DE 06-061 dated September 15, 2008)

GRANITE STATE ELECTRIC COMPANY
INTERCONNECTION STANDARDS PROVISION
FOR INVERTERS SIZED UP TO 100 KVA

Terms and Conditions for Simplified Process Interconnections

1. **Construction of the Facility.** The Interconnecting Customer may proceed to construct the Facility in compliance with the specifications of its Application once the Approval to Install the Facility has been signed by the Company.
2. **Interconnection and operation.** The Interconnecting Customer may operate Facility and interconnect with the Company's system once the all of the following has occurred:
 - 2.1. **Municipal Inspection.** Upon completing construction, the Interconnecting Customer will cause the Facility to be inspected or otherwise certified by the local electrical wiring inspector with jurisdiction.
 - 2.2. **Certificate of Completion.** The Interconnecting Customer returns the Certificate of Completion to the Agreement to the Company at address noted.
 - 2.3. **Company has completed or waived the right to inspection.**
3. **Company Right of Inspection.** The Company will make every attempt within ten (10) business days after receipt of the Certificate of Completion, and upon reasonable notice and at a mutually convenient time, conduct an inspection of the Facility to ensure that all equipment has been appropriately installed and that all electrical connections have been made in accordance with the Interconnection Standard. The Company has the right to disconnect the Facility in the event of improper installation or failure to return Certificate of Completion. All projects larger than 10 kVA will be witness tested, unless waived by the Company.
4. **Safe Operations and Maintenance.** The Interconnecting Customer shall be fully responsible to operate, maintain, and repair the Facility.
5. **Disconnection.** The Company may temporarily disconnect the Facility to facilitate planned or emergency Company work.
6. **Metering and Billing.** All renewable Facilities approved under this Agreement that qualify for net metering, as approved by the Commission from time to time, and the following is necessary to implement the net metering provisions:
 - 6.1. **Interconnecting Customer Provides:** The Interconnecting Customer shall furnish and install, if not already in place, the necessary meter socket and wiring in accordance with accepted electrical standards. In some cases the Interconnecting Customer may be required to install a separate telephone line.
 - 6.2. **Company Installs Meter.** The Company will make every attempt to furnish and install a meter capable of net metering within ten (10) business days after receipt of the Certificate of Completion if inspection is waived, or within 10 business days after the inspection is completed, if such meter is not already in place.
7. **Indemnification.** Interconnecting Customer and Company shall each indemnify, defend and hold the other, its directors, officers, employees and agents (including, but not limited to, Affiliates and contractors and their employees), harmless from and against all liabilities, damages, losses, penalties, claims, demands, suits and proceedings of any nature whatsoever for personal injury (including death) or property damages to unaffiliated third parties that arise out of, or are in any manner connected with, the performance of this Agreement by that party, except to the extent that such injury or damages to unaffiliated third parties may be attributable to the negligence or willful misconduct of the party seeking indemnification.

Issued: December 30, 2008

Issued by: /s/ Thomas B. King

Effective: January 1, 2009

Thomas B. King
Title: President

(Issued in Compliance with Order No. 24,893 in Docket No. DE 06-061 dated September 15, 2008)

GRANITE STATE ELECTRIC COMPANY
INTERCONNECTION STANDARDS PROVISION
FOR INVERTERS SIZED UP TO 100 KVA

8. **Limitation of Liability.** Each party's liability to the other party for any loss, cost, claim, injury, liability, or expense, including reasonable attorney's fees, relating to or arising from any act or omission in its performance of this Agreement, shall be limited to the amount of direct damage actually incurred. In no event shall either party be liable to the other party for any indirect, incidental, special, consequential, or punitive damages of any kind whatsoever.
9. **Termination.** This Agreement may be terminated under the following conditions:
 - 9.1. **By Mutual Agreement.** The Parties agree in writing to terminate the Agreement.
 - 9.2. **By Interconnecting Customer.** The Interconnecting Customer may terminate this Agreement by providing written notice to Company.
 - 9.3. **By Company.** The Company may terminate this Agreement (1) if the Facility fails to operate for any consecutive 12 month period, or (2) in the event that the Facility impairs or, in the good faith judgment of the Company, may imminently impair the operation of the electric distribution system or service to other customers or materially impairs the local circuit and the Interconnecting Customer does not cure the impairment.
10. **Assignment/Transfer of Ownership of the Facility.** This Agreement shall survive the transfer of ownership of the Facility to a new owner when the new owner agrees in writing to comply with the terms of this Agreement and so notifies the Company.
11. **Interconnection Standard.** These Terms and Conditions are pursuant to the Company's "Interconnection Standards for Inverters Sized Up to 100 kVA" for the Interconnection of Customer-Owned Generating Facilities, as approved by the Commission and as the same may be amended from time to time ("Interconnection Standard"). All defined terms set forth in these Terms and Conditions are as defined in the Interconnection Standard (see Company's website for the complete document).

Issued: December 30, 2008

Issued by: /s/ Thomas B. King

Effective: January 1, 2009

Thomas B. King
Title: President

(Issued in Compliance with Order No. 24,893 in Docket No. DE 06-061 dated September 15, 2008)

GRANITE STATE ELECTRIC COMPANY
INTERCONNECTION STANDARDS PROVISION
FOR INVERTERS SIZED UP TO 100 KVA

Exhibit B - Certificate of Completion for Simplified Process Interconnections

Installation Information:

Check if owner-installed

Customer or Company Name (print): _____ Contact Person, if Company: _____

Mailing Address: _____

City: _____ State: _____ Zip Code: _____

Telephone (Daytime): _____ (Evening): _____

Facsimile Number: _____ E-Mail Address: _____

Address of Facility (if different from above): _____

City: _____ State: _____ Zip Code: _____

Electrical Contractor's Name (if appropriate): _____

Mailing Address: _____

City: _____ State: _____ Zip Code: _____

Telephone (Daytime): _____ (Evening): _____

Facsimile Number: _____ E-Mail Address: _____

License number: _____

Date of approval to install Facility granted by the Company: _____

Application ID number: _____

Inspection:

The system has been installed and inspected in compliance with the local Building/Electrical Code of

(City/County)

Signed (Local Electrical Wiring Inspector, or attach signed electrical inspection): _____

Name (printed): _____

Date: _____

As a condition of interconnection you are required to send/fax a copy of this form to (insert Company's name below):

Name: _____

Company: _____

Mail 1: _____

Mail 2: _____

City, State ZIP: _____

Fax No.: _____

Issued: December 30, 2008

Issued by: /s/ Thomas B. King

Thomas B. King

Effective: January 1, 2009

Title: President

(Issued in Compliance with Order No. 24,893 in Docket No. DE 06-061 dated September 15, 2008)

GRANITE STATE ELECTRIC COMPANY
INTERCONNECTION STANDARDS PROVISION
FOR INVERTERS SIZED UP TO 100 KVA

Exhibit C – Supplemental Review Agreement

This Agreement, dated _____, is entered into by and between (name, address) _____ (“Interconnecting Customer”) and the Company, for the purpose of setting forth the terms, conditions and costs for conducting a Supplemental Review relative to the Interconnection Process as defined in Section 1.0 and outlined in Section 3.0 of the Interconnection Standard. This Supplemental Review pertains to the interconnection application the Interconnecting Customer has filed for interconnecting a ___kVA Facility at _____ (address of Facility).

If the Supplemental Review determines the requirements for processing the application including any System Modifications, then the modification requirements and costs for those modifications will be identified and included in a billing statement sent by the Company to the Interconnecting Customer for authorization and payment. If the Supplemental Review does not determine the requirements, it will include a proposed Impact Study Agreement as part of the Company’s standard interconnection process which will include an estimate of the cost of the study.

The Interconnecting Customer agrees to provide, in a timely and complete manner, all additional information and technical data necessary for the Company to conduct the Supplemental Review not already provided in the Interconnecting Customer’s application.

All work pertaining to the Supplemental Review that is the subject of this Agreement will be approved and coordinated only through designated and authorized representatives of the Company and the Interconnecting Customer. Each party shall inform the other in writing of its designated and authorized representative, if different than what is in the application.

The Company shall perform the Supplemental Review for a fee not to exceed \$1,250. The Company anticipates that the Supplemental Review will cost \$ _____. No work will be performed until payment is received.

Please indicate your acceptance of this Agreement by signing below.

Interconnecting Customer

Issued: December 30, 2008

Issued by: /s/ Thomas B. King

Effective: January 1, 2009

Thomas B. King

Title: President

(Issued in Compliance with Order No. 24,893 in Docket No. DE 06-061 dated September 15, 2008)