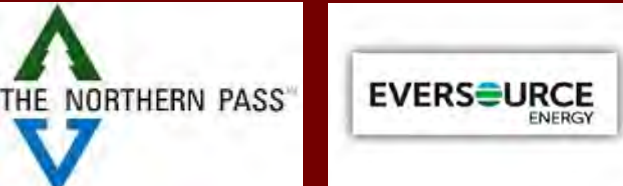


# NORTHERN PASS PROJECT Public Water & Rail Crossings DE 15-460 & DE 15-461

### Legend

- Pole/Structure Location
- Northern Pass**
  - 320 kV Line
  - Transition Station
- Eversource Lines**
  - 115 kV
  - 34.5 kV
  - Right-of-way
- Parcel Boundary
- Town Boundary
- State Land

- Interstate
- US Route
- State Road
- Public Road
- Driveway
- Ramp/Crossover
- Railroad
- Abandoned Railroad

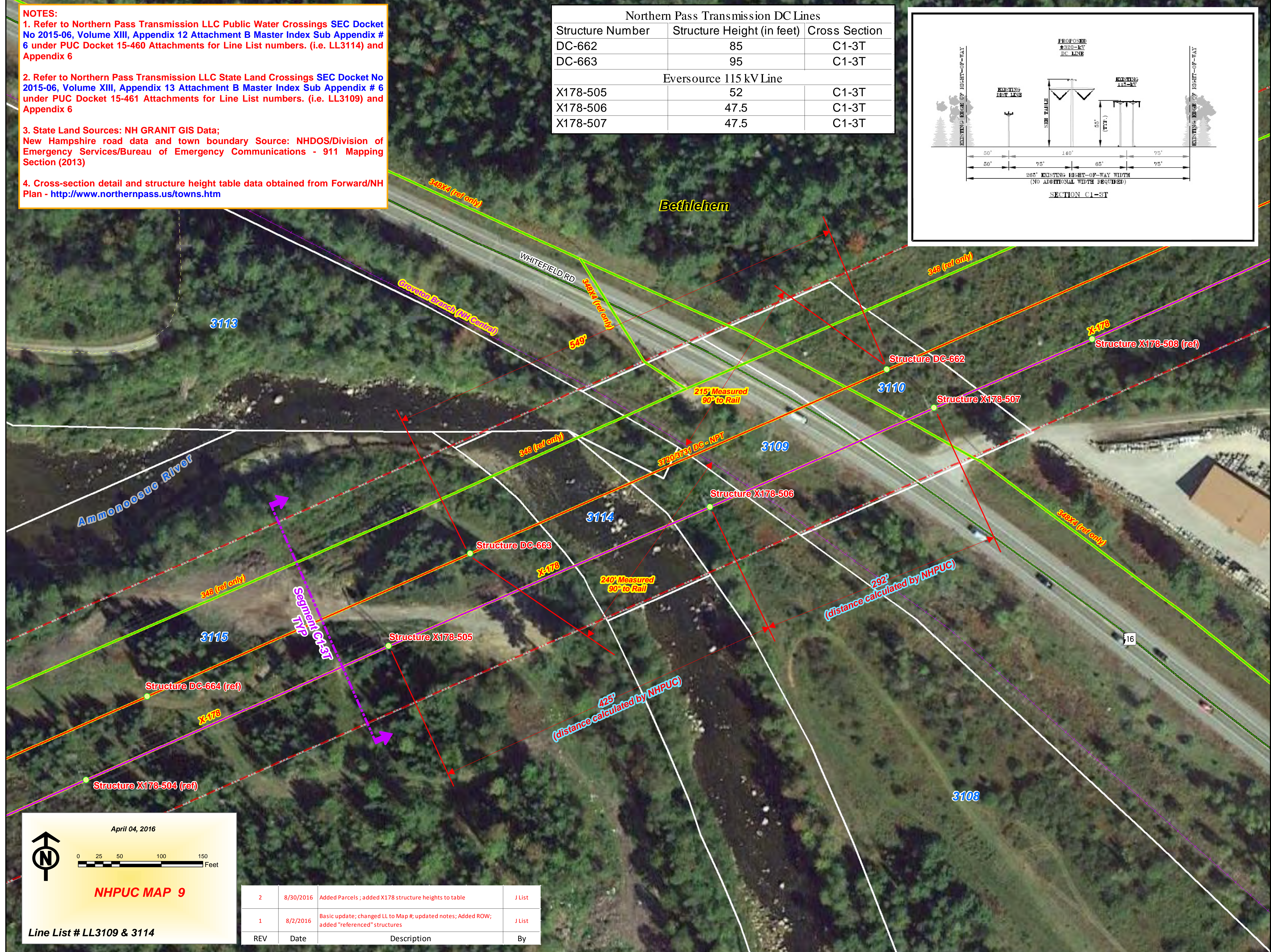
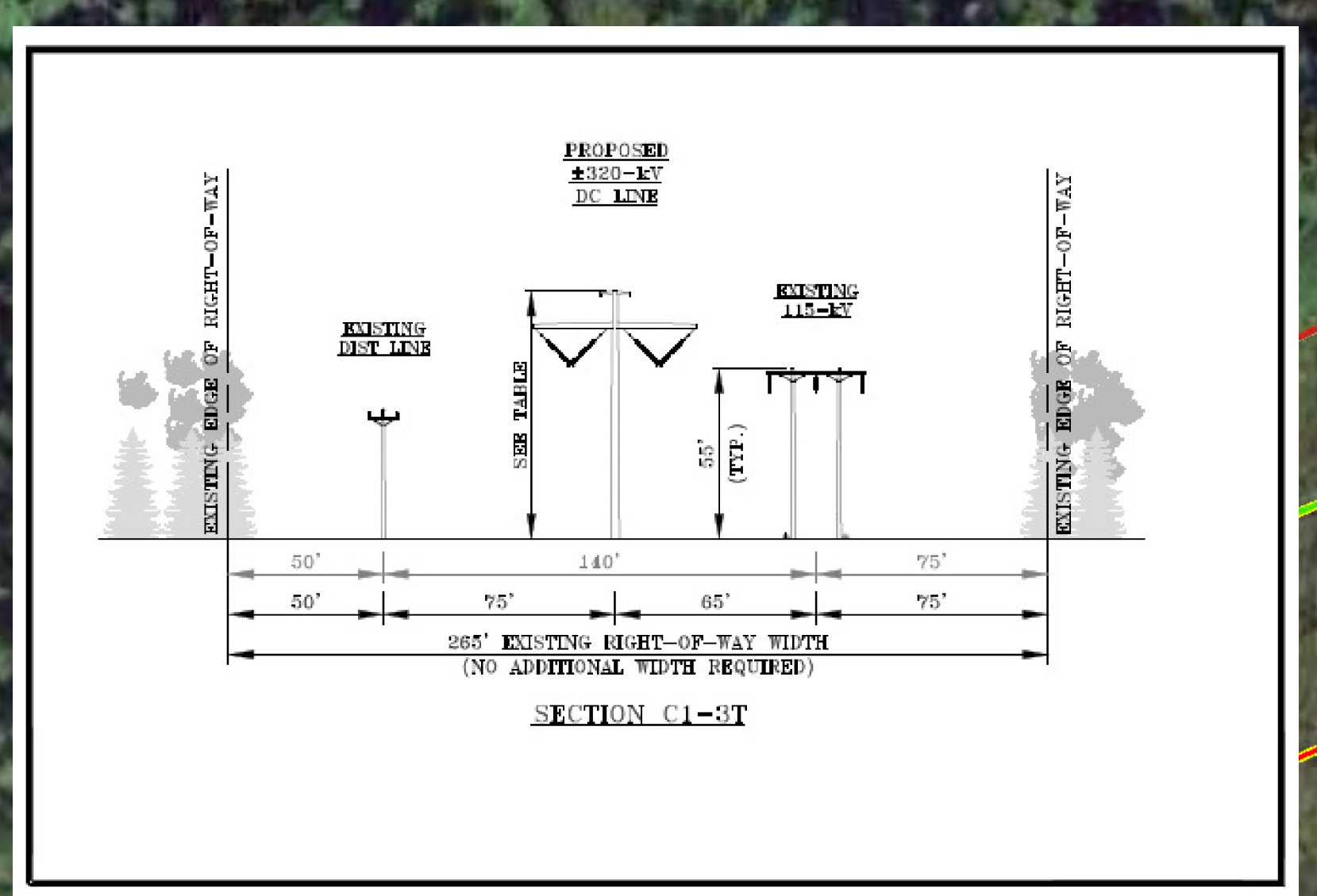


Prepared By:  
N.H. Public Utilities Commission  
Safety Division : GIS Section

**NOTES:**

1. Refer to Northern Pass Transmission LLC Public Water Crossings SEC Docket No 2015-06, Volume XIII, Appendix 12 Attachment B Master Index Sub Appendix # 6 under PUC Docket 15-460 Attachments for Line List numbers. (i.e. LL3114) and Appendix 6
2. Refer to Northern Pass Transmission LLC State Land Crossings SEC Docket No 2015-06, Volume XIII, Appendix 13 Attachment B Master Index Sub Appendix # 6 under PUC Docket 15-461 Attachments for Line List numbers. (i.e. LL3109) and Appendix 6
3. State Land Sources: NH GRANIT GIS Data; New Hampshire road data and town boundary Source: NHDOS/Division of Emergency Services/Bureau of Emergency Communications - 911 Mapping Section (2013)
4. Cross-section detail and structure height table data obtained from Forward/NH Plan - <http://www.northernpass.us/towns.htm>

Northern Pass Transmission DC Lines		
Structure Number	Structure Height (in feet)	Cross Section
DC-662	85	C1-3T
DC-663	95	C1-3T
Eversource 115 kV Line		
X178-505	52	C1-3T
X178-506	47.5	C1-3T
X178-507	47.5	C1-3T



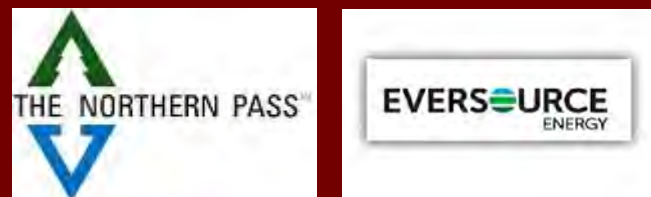
REV	Date	Description	By
2	8/30/2016	Added Parcels ; added X178 structure heights to table	J List
1	8/2/2016	Basic update; changed LL to Map #; updated notes; Added ROW; added "referenced" structures	J List

# NORTHERN PASS PROJECT Public Water Crossings - DE 15-460

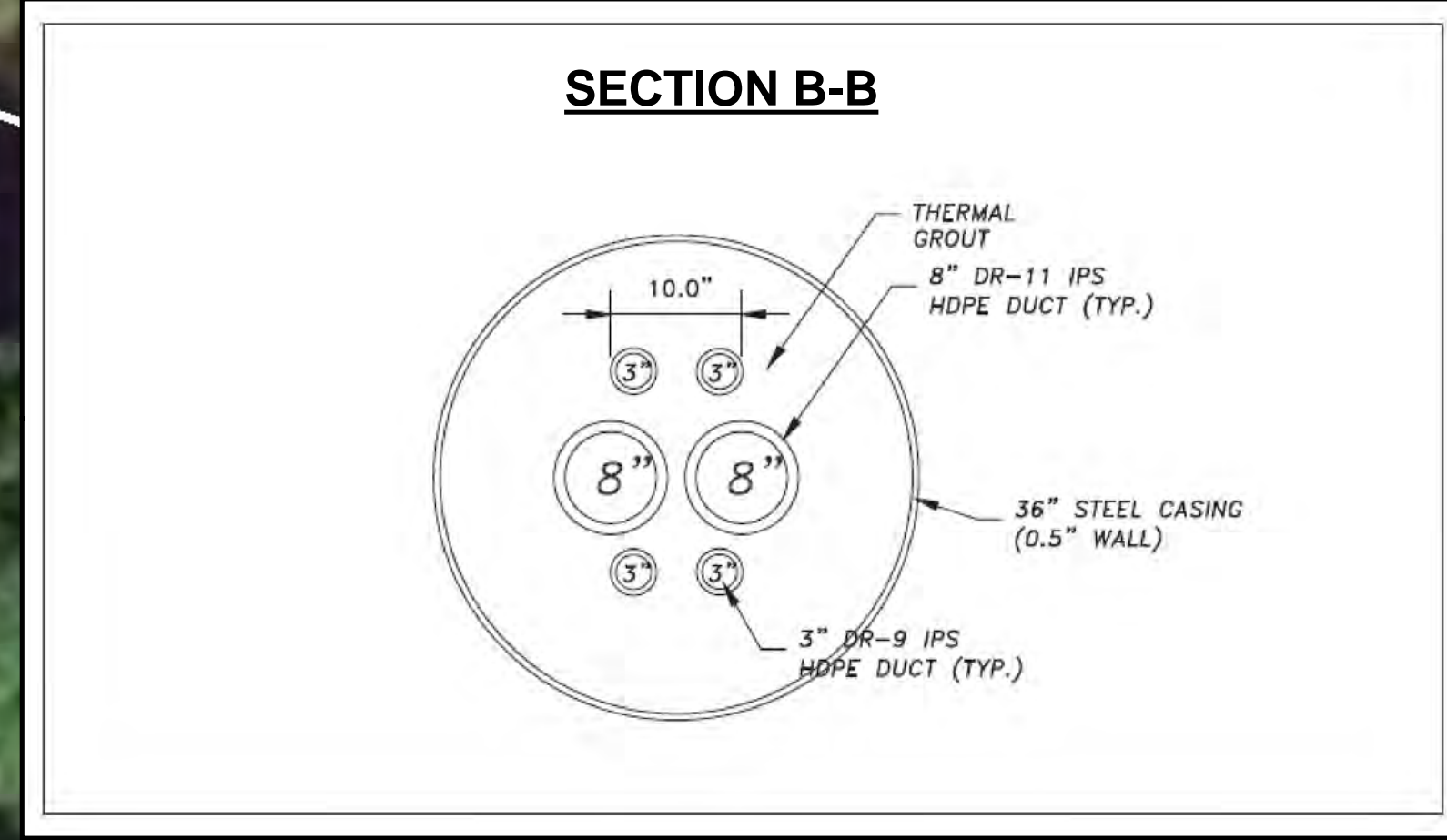
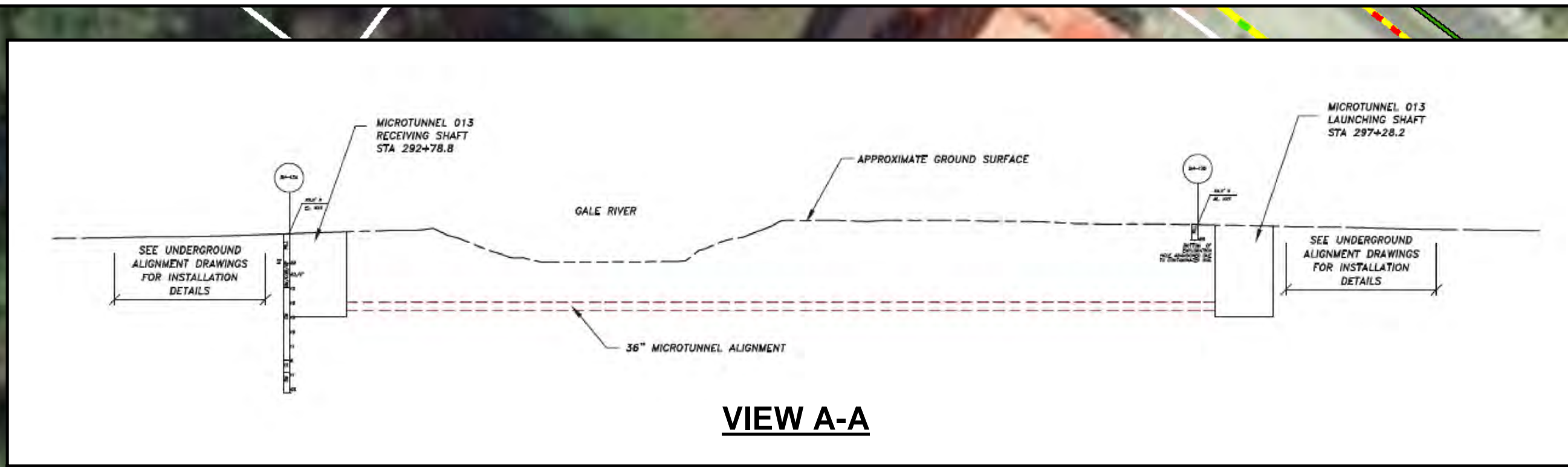
### Legend

- Pole/Structure Location
- Northern Pass**
  - 320 kV Line (Underground)
  - HVDC - Trenchless
  - Sending/Receiving Pit
- Eversource Lines**
  - 34.5 kV
  - 34.5 kV Underground
  - Right-of-way
  - Parcel Boundary
  - Town Boundary

- Interstate
- US Route
- State Route
- Public Road
- Driveway
- Ramp/Crossover
- Railroad
- Abandoned Railroad



Prepared By:  
N.H. Public Utilities Commission  
Safety Division : GIS Section



**NOTES:**

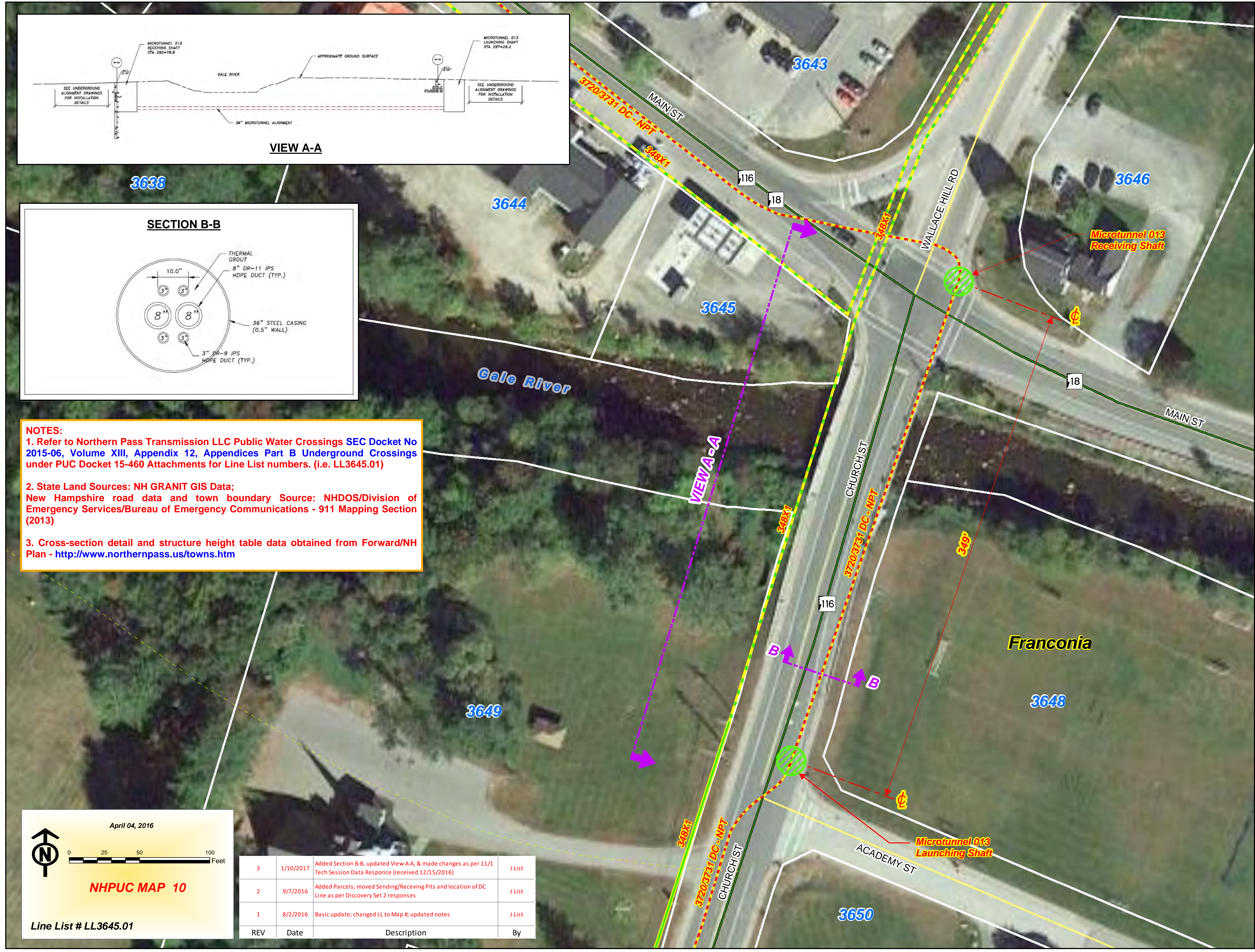
1. Refer to Northern Pass Transmission LLC Public Water Crossings SEC Docket No 2015-06, Volume XIII, Appendix 12, Appendices Part B Underground Crossings under PUC Docket 15-460 Attachments for Line List numbers. (i.e. LL3645.01)
2. State Land Sources: NH GRANIT GIS Data; New Hampshire road data and town boundary Source: NHDOS/Division of Emergency Services/Bureau of Emergency Communications - 911 Mapping Section (2013)
3. Cross-section detail and structure height table data obtained from Forward/NH Plan - <http://www.northernpass.us/towns.htm>

April 04, 2016

**NHPUC MAP 10**

Line List # LL3645.01

REV	Date	Description	By
3	1/10/2017	Added Section B-B, updated View A-A, & made changes as per 11/1 Tech Session Data Response (received 12/15/2016)	J List
2	9/7/2016	Added Parcels; moved Sending/Receiving Pits and location of DC Line as per Discovery Set 2 responses	J List
1	8/2/2016	Basic update; changed LL to Map #; updated notes	J List



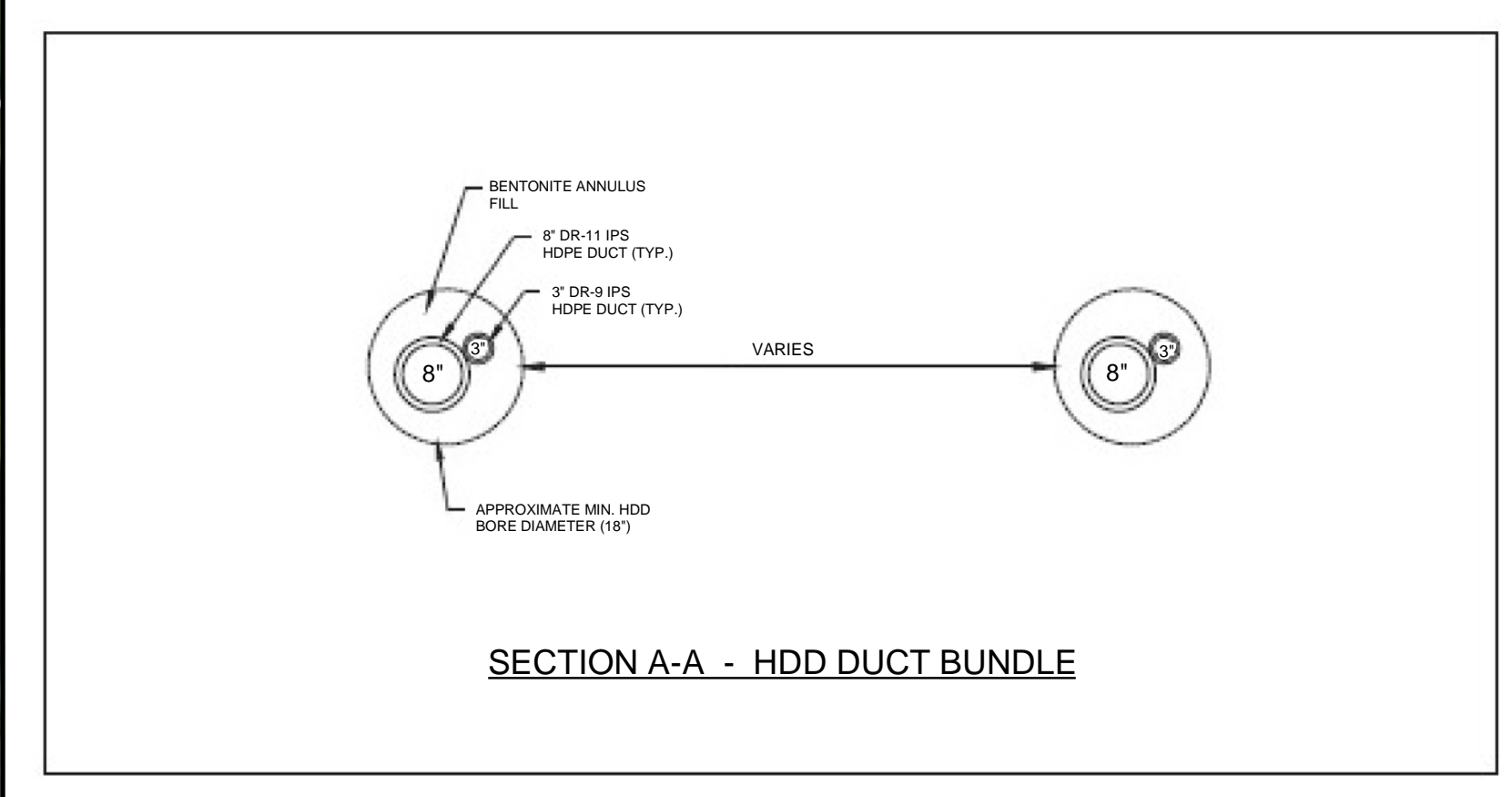
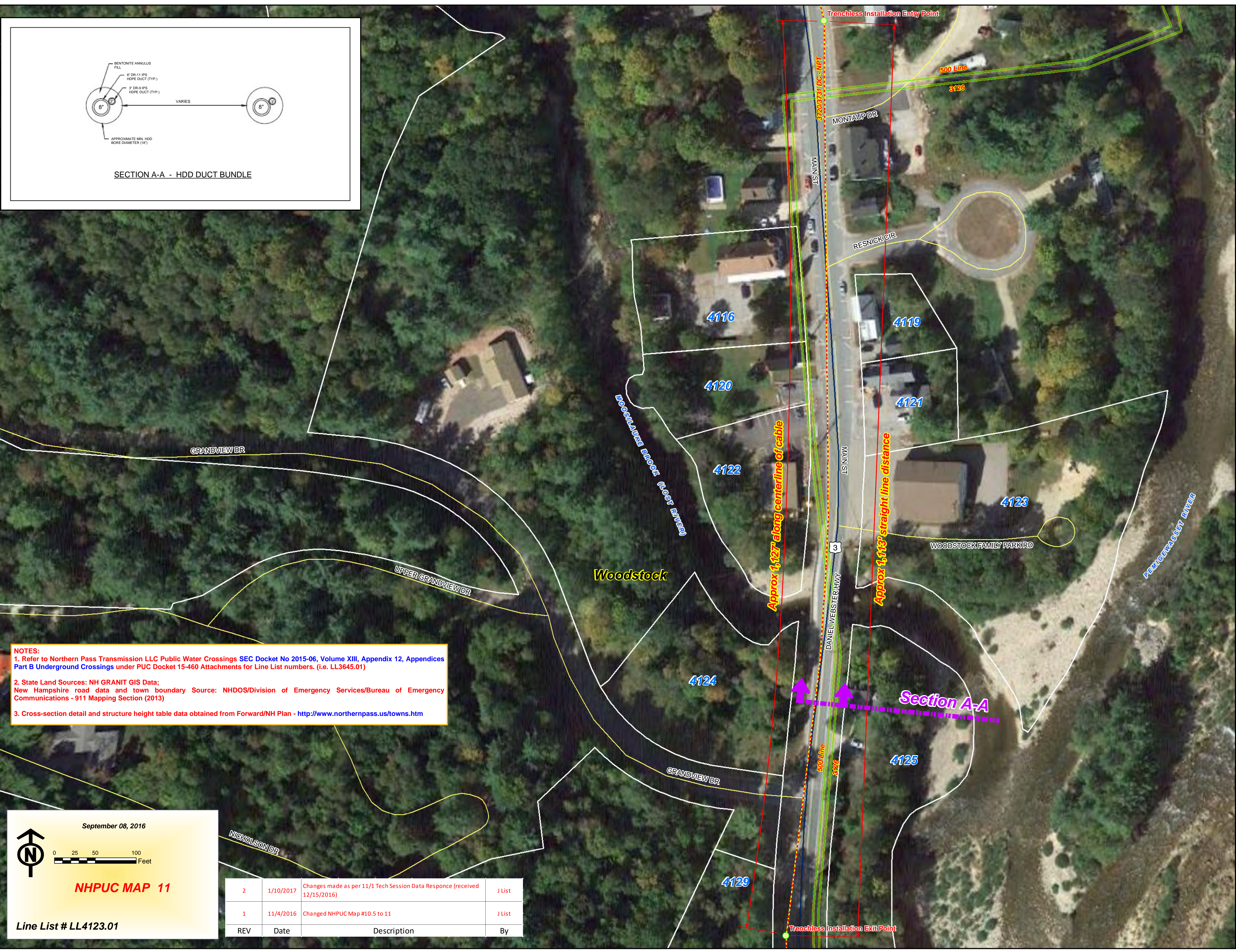
# NORTHERN PASS PROJECT Public Water Crossings - DE 15-460

Prepared By:  
N.H. Public Utilities Commission  
Safety Division : GIS Section

### Legend

- Trenchless Installation Start/End
- Northern Pass
  - 320 kV Line (Underground)
  - Sending/Receiving Pit
- Eversource Lines
  - 34.5 kV
  - Parcel Boundary
  - Town Boundary

- Interstate
- US Route
- State Route
- Public Road
- Driveway
- Ramp/Crossover
- Railroad
- Abandoned Railroad



**NOTES:**  
 1. Refer to Northern Pass Transmission LLC Public Water Crossings SEC Docket No 2015-06, Volume XIII, Appendix 12, Appendices Part B Underground Crossings under PUC Docket 15-460 Attachments for Line List numbers. (i.e. LL3645.01)  
 2. State Land Sources: NH GRANIT GIS Data; New Hampshire road data and town boundary Source: NHDOS/Division of Emergency Services/Bureau of Emergency Communications - 911 Mapping Section (2013)  
 3. Cross-section detail and structure height table data obtained from Forward/NH Plan - <http://www.northernpass.us/towns.htm>

September 08, 2016

**NHPUC MAP 11**

Line List # LL4123.01

REV	Date	Description	By
2	1/10/2017	Changes made as per 11/1 Tech Session Data Response (received 12/15/2016)	J List
1	11/4/2016	Changed NHPUC Map #10.5 to 11	J List

# NORTHERN PASS PROJECT Public Water Crossings - DE 15-460

## Legend

● Entry/Exit Location

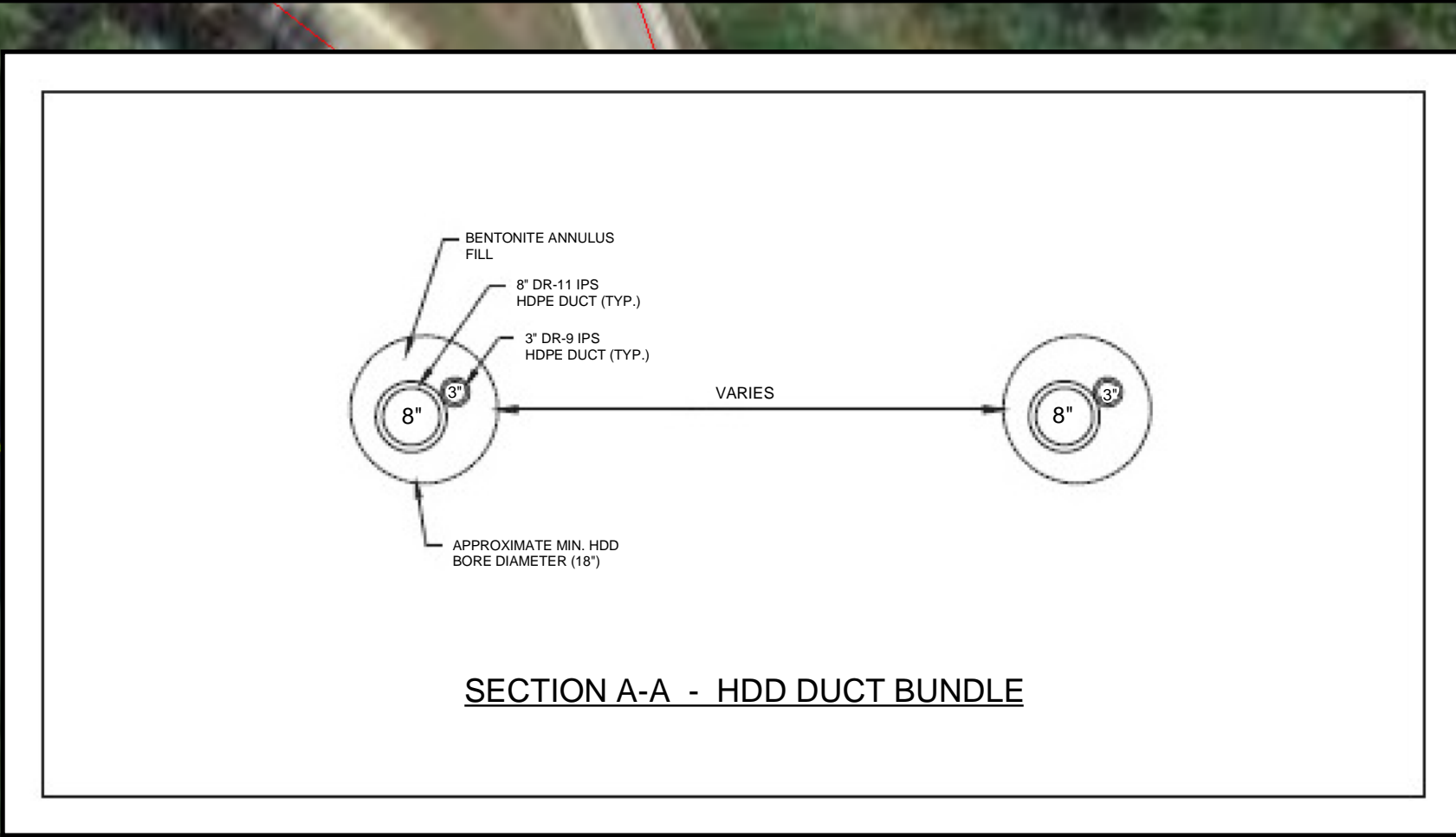
### Eversource Lines

- 34.5 kV
- 320 kV Line (Underground)
- HVDC - Trenchless
- Right-of-way
- Town Boundary
- Parcel Boundary
- Slate Land

- Interstate
- US Route
- State Route
- Public Road
- Driveway
- Ramp/Crossover
- Railroad
- Abandoned Railroad



Prepared By:  
N.H. Public Utilities Commission  
Safety Division : GIS Section



**NOTES:**  
 1. Refer to Northern Pass Transmission LLC Public Water Crossings SEC Docket No 2015-06, Volume XIII, Appendix 12, Appendices Part B Underground Crossings under PUC Docket 15-460 Attachments for Line List numbers. (i.e. LL5342.01)  
 2. State Land Sources: NH GRANIT GIS Data; New Hampshire road data and town boundary Source: NHDOS/Division of Emergency Services/Bureau of Emergency Communications - 911 Mapping Section (2013)  
 3. Cross-section detail and structure height table data obtained from Forward/NH Plan - <http://www.northernpass.us/towns.htm>

April 04, 2016

**NHPUC MAP 12**

Line List # LL5342.01

REV	Date	Description	By
4	1/10/2017	Changes made as per 11/1 Tech Session Data Response (received 12/15/2016)	J List
3	11/4/2016	Changed NHPUC Map #11 to 12	J List
2	9/7/2016	Added Parcels	J List
1	8/3/2016	Basic update; changed LL to Map #; updated notes	J List