

LEGEND:

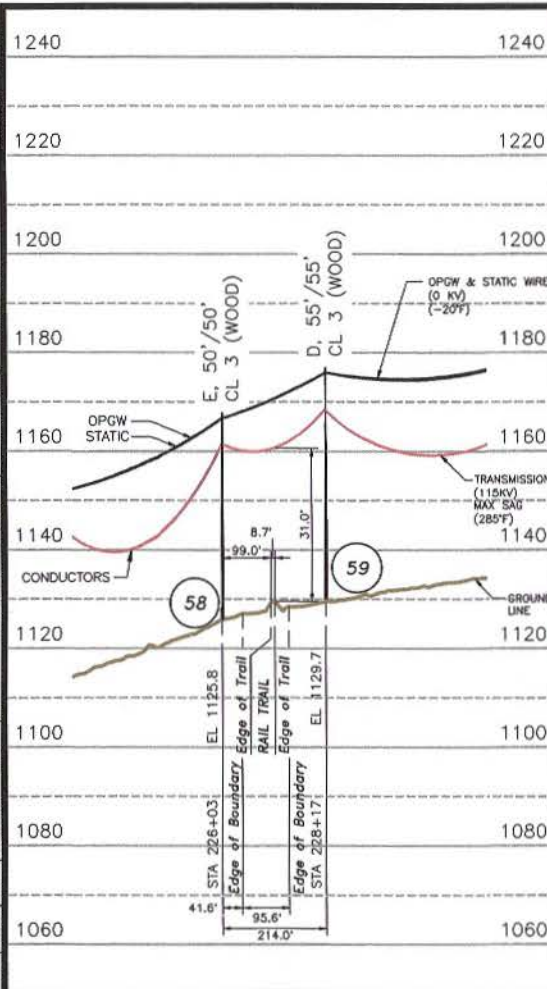
- DENOTES TRANSMISSION LINE
- DENOTES STRUCTURE NUMBER
- DENOTES ROAD
- DENOTES WATER
- DENOTES RIVERS & STREAMS
- DENOTES COUNTY LINES



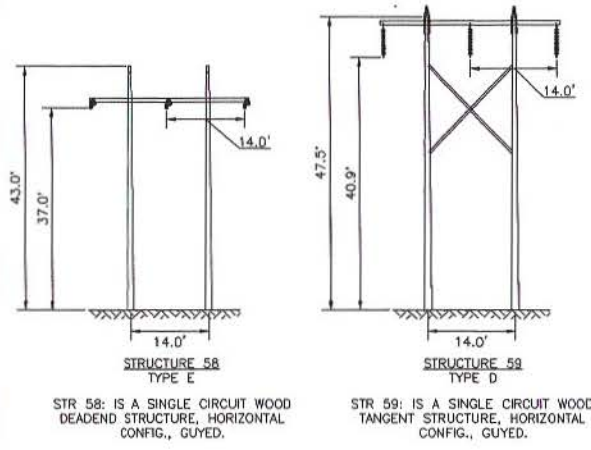
NO	ISSUED TO	DATE	SAL	GEL	ERS
1	PLC	06/12/20			
DWG KEY	DATE	DATE	DATE	DATE	DATE

<h1 style="margin: 0;">EVERSOURCE</h1> <h2 style="margin: 0;">ENERGY</h2>	<table border="1" style="font-size: small;"> <tr><td style="text-align: center;">T</td><td style="text-align: center;">I</td></tr> <tr><td style="text-align: center;">DRAWN NEB/TRC</td><td style="text-align: center;">ENGINEER GEL/TRC</td></tr> <tr><td style="text-align: center;">CHECKED SEL/TRC</td><td style="text-align: center;">APPROVED GEL/TRC</td></tr> <tr><td style="text-align: center;">DATE 06/12/20</td><td></td></tr> </table>	T	I	DRAWN NEB/TRC	ENGINEER GEL/TRC	CHECKED SEL/TRC	APPROVED GEL/TRC	DATE 06/12/20	
	T	I							
DRAWN NEB/TRC	ENGINEER GEL/TRC								
CHECKED SEL/TRC	APPROVED GEL/TRC								
DATE 06/12/20									
<p>LINE S136 115KV TRANSMISSION PERMIT CROSSING DRAWINGS OVERVIEW MAP EXHIBIT #1</p>									

SCALE	FILE: S13643901.DWG	DRAWING NO.	S13643901
AS SHOWN	RAND		

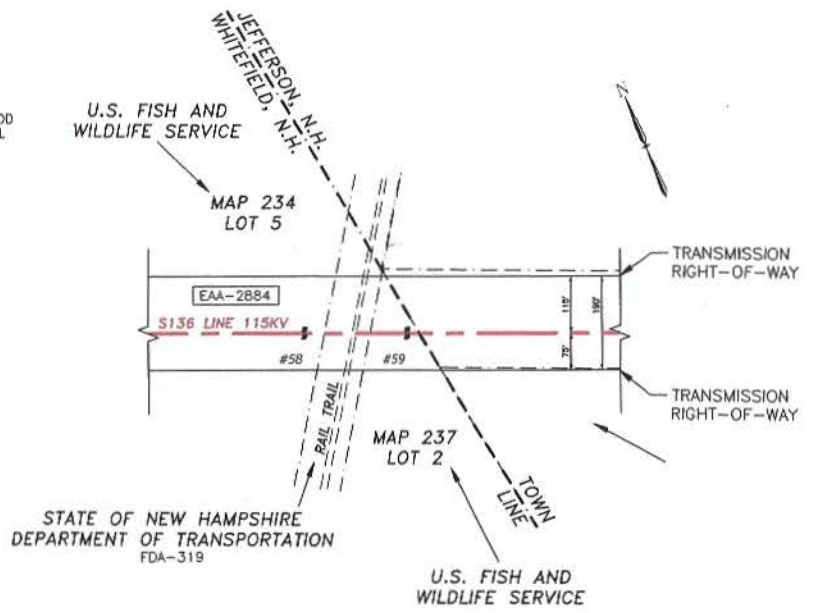


TOWN OF WHITEFIELD, N.H.



STR 58: IS A SINGLE CIRCUIT WOOD DEADEND STRUCTURE, HORIZONTAL CONFIG., GUYED.
 STR 59: IS A SINGLE CIRCUIT WOOD TANGENT STRUCTURE, HORIZONTAL CONFIG., GUYED.

NESC VERTICAL CLEARANCE (FT) FROM TABLE 232.1	
NATURE OF SURFACE UNDERNEATH WIRES, CONDUCTORS OR CABLES	LINE VOLTAGE (KV)
ROADS, STREETS AND OTHER AREAS SUBJECT TO TRUCK TRAFFIC	115
SPACES AND WAYS SUBJECT TO PEDESTRIAN OR RESTRICTED TRAFFIC ONLY	20.1
	16.1



NOTES:
 1. VERTICAL DATUM IS NAVD88 IN FEET.
 2. COORDINATE SYSTEM IS NEW HAMPSHIRE STATE PLANE NAD 83.
 3. ALL LINE WORK FOR PARCELS FROM NH GRANIT UNLESS NOTED OTHERWISE.

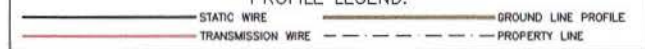
STRUCTURE LOCATION:

STR. #58 - LAT. = 44°22'1.049"N
 LONG. = 71°31'39.957"W
 STR. #59 - LAT. = 44°22'0.255"N
 LONG. = 71°31'37.232"W

CABLE SCHEDULE:

WIRE	# OF CABLES	TYPE	DIA. (IN.)	WEIGHT/1000 FT	CABLE STRENGTH (LBS.)
STATIC	1	7#8 ALUMOWELD	0.385	261.8	15,930
OPGW	1	INCAB OPGW	0.457	245.0	11,719
TRANSMISSION COND.	3	795 KCML 36/1 ACSR COOT	1.040	803.6	16,800

PROFILE LEGEND:

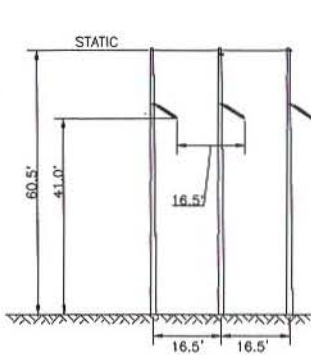
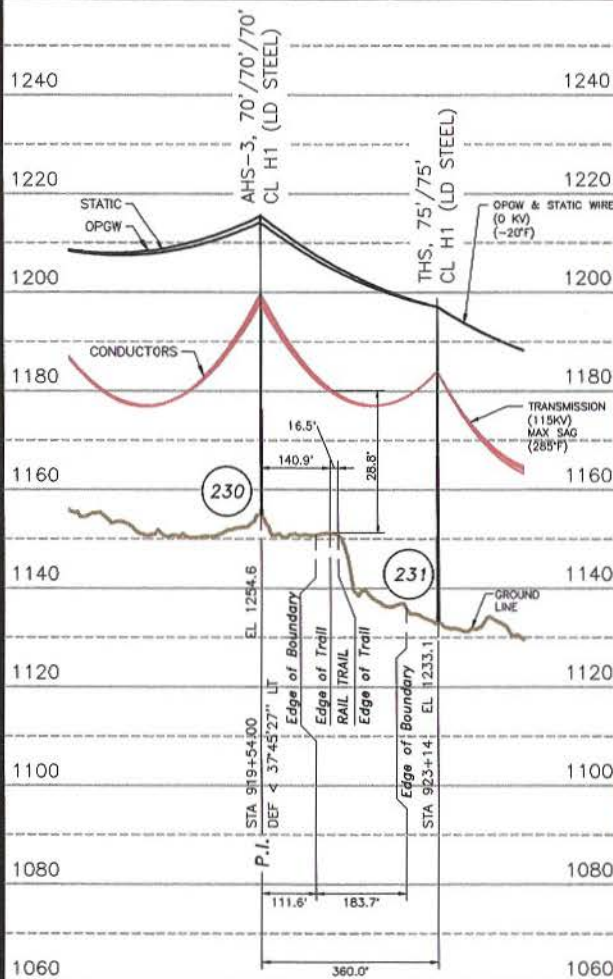


NO	ISSUED TO	DATE	BY	CHKD	APPV
1	ISSUED TO PUC	03/27/20	SAL	GEL	BPS
DWG REV	EPV/DES/DR/PSH	CONT/PLE	DATE	CHKD	APPV

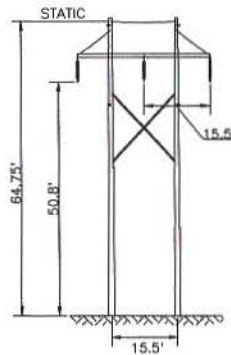
LINE S136 115KV TRANSMISSION
 STATE LAND CROSSING
 WHITEFIELD, N.H.
 EXHIBIT #2

SCALE AS SHOWN	DRAWING NO. S13643504
FILE: S13643504.DWG	DATE: 11/13/19

TOWN OF RANDOLPH, N.H.

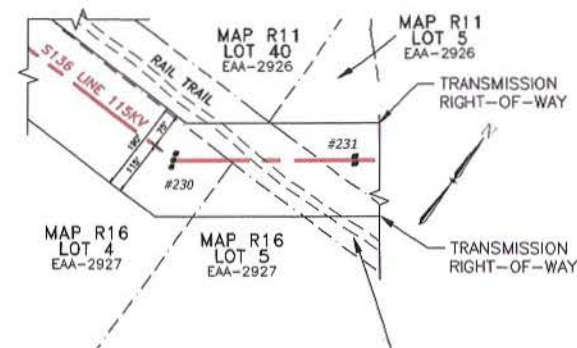


STR 230: IS A SINGLE CIRCUIT STEEL ANGLE STRUCTURE, HORIZONTAL CONFIG., GUYED.



STR 231: IS A SINGLE CIRCUIT STEEL TANGENT STRUCTURE, HORIZONTAL CONFIG.

NESC VERTICAL CLEARANCE (FT) FROM TABLE 232.1	
NATURE OF SURFACE UNDERNEATH WIRES, CONDUCTORS OR CABLES	LINE VOLTAGE (KV)
ROADS, STREETS AND OTHER AREAS SUBJECT TO TRUCK TRAFFIC	115
SPACES AND WAYS SUBJECT TO PEDESTRIAN OR RESTRICTED TRAFFIC ONLY	20.1
	16.1



STATE OF NEW HAMPSHIRE
DEPARTMENT OF TRANSPORTATION

- NOTES:
 1. VERTICAL DATUM IS NAVD88 IN FEET.
 2. COORDINATE SYSTEM IS NEW HAMPSHIRE STATE PLANE NAD 83.
 3. ALL LINE WORK FOR PARCELS FROM NH GRANIT UNLESS NOTED OTHERWISE.

STRUCTURE LOCATION:

STR. #230 - LAT. = 44°22'14.903"N
 LONG. = 71°16'22.701"W
 STR. #231 - LAT. = 44°22'17.029"N
 LONG. = 71°16'18.723"W

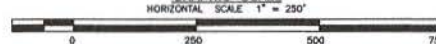
CABLE SCHEDULE:

WIRE	# OF CABLES	TYPE	DIA. (IN.)	WEIGHT/1000 FT	CABLE STRENGTH (LBS.)
STATIC	1	7#8 ALUMOWELD	0.385	261.8	15,930
OPGW	1	INCAB OPGW	0.457	245.0	11,719
TRANSMISSION COND.	3	795 KCML 36/1 ACSR COOT	1.040	803.6	16,800

PROFILE LEGEND:



GRAPHIC SCALE

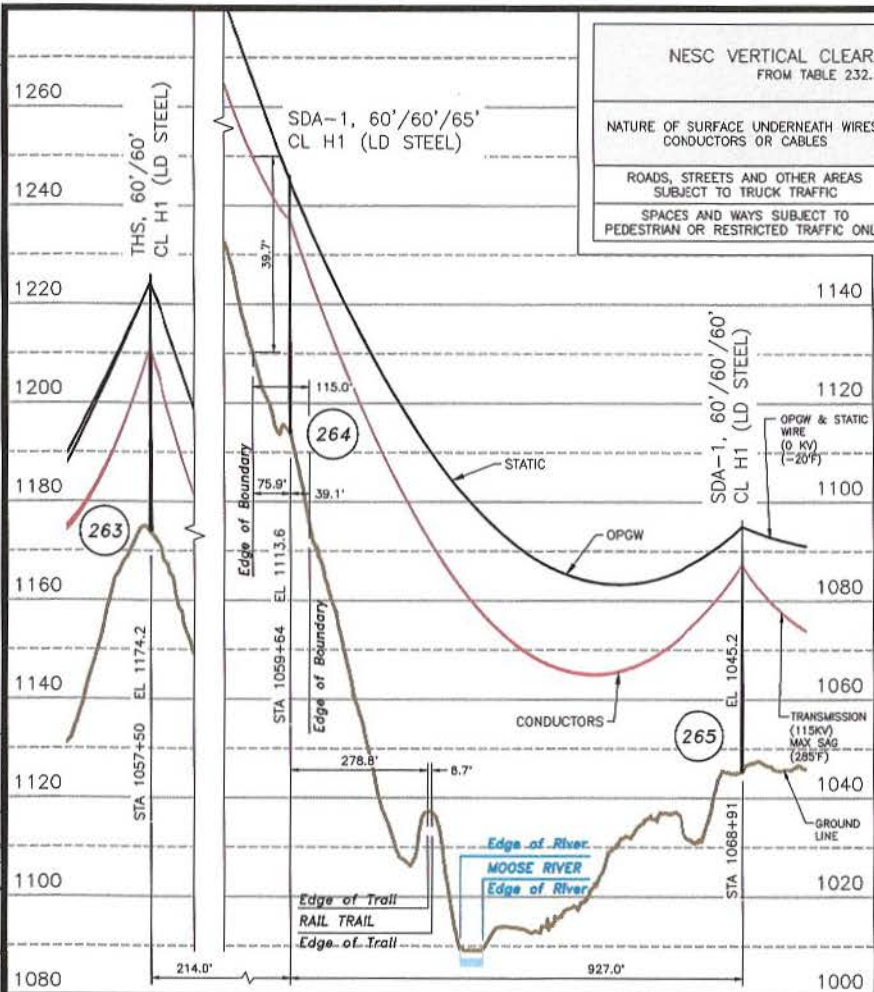


NO.	ISSUED TO PUC	DATE	BY	CHKD	APPV
1	ISSUED TO PUC	03/27/20	SAL	GEL	BRS
DWG REV	EPN/DESCRIPTION	CON/PLN DATE	ENR	CHKD	APPV

EVERSOURCE ENERGY

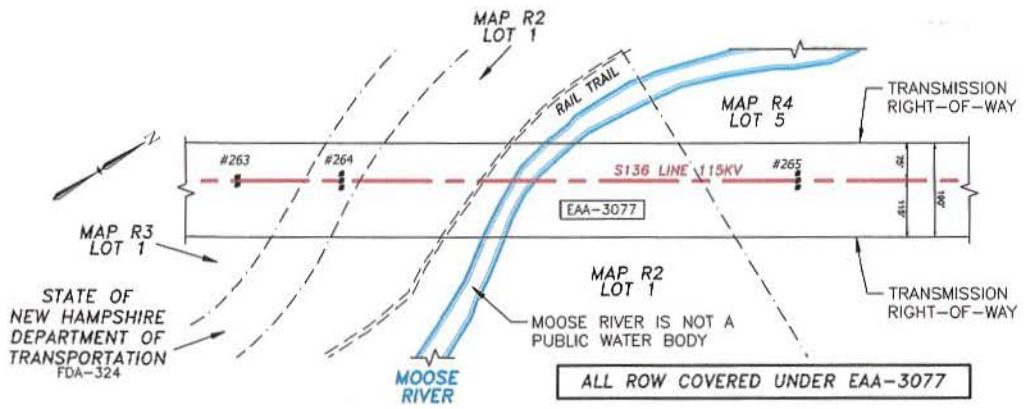
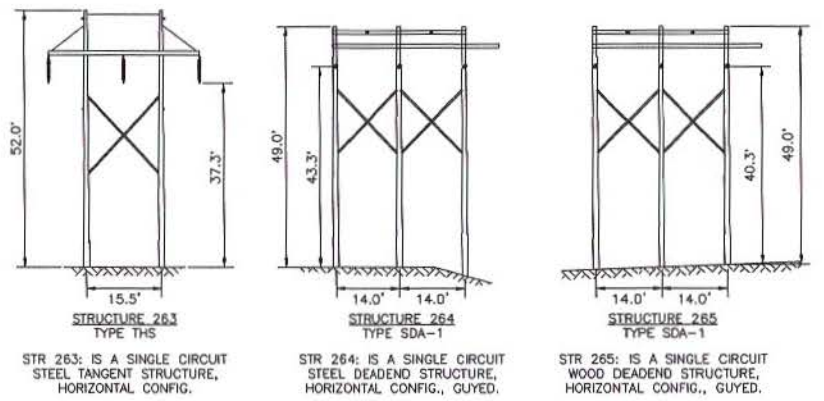
LINE S136 115KV TRANSMISSION
STATE LAND CROSSING
RANDOLPH, N.H.
EXHIBIT #3

SCALE AS SHOWN	FILE: S13643503.DWG	DRAWING NO. S13643503
DATE: 08/06/19		ENGINEER: GEL/TRC
CHECKED: SAL/TRC		APPROVED: GEL/TRC



NESC VERTICAL CLEARANCE (FT) FROM TABLE 232.1	
NATURE OF SURFACE UNDERNEATH WIRES, CONDUCTORS OR CABLES	LINE VOLTAGE (KV)
ROADS, STREETS AND OTHER AREAS SUBJECT TO TRUCK TRAFFIC	115
SPACES AND WAYS SUBJECT TO PEDESTRIAN OR RESTRICTED TRAFFIC ONLY	20.1
	16.1

TOWN OF GORHAM, N.H.



NOTES:
 1. VERTICAL DATUM IS NAVD88 IN FEET.
 2. COORDINATE SYSTEM IS NEW HAMPSHIRE STATE PLANE NAD 83 US SURVEY FEET.
 3. ALL LINE WORK FOR PARCELS FROM NH GRANIT UNLESS NOTED OTHERWISE.

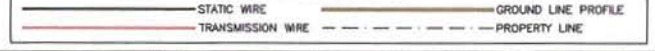
STRUCTURE LOCATION:

- STR. #263 - LAT. = 44°22'55.128"N
LONG. = 71°13'29.235"W
- STR. #264 - LAT. = 44°22'56.922"N
LONG. = 71°13'27.672"W
- STR. #265 - LAT. = 44°23'4.659"N
LONG. = 71°13'20.861"W

CABLE SCHEDULE:

WIRE	# OF CABLES	TYPE	DIA. (IN.)	WEIGHT/1000 FT	CABLE STRENGTH (LBS.)
STATIC	1	7#8 ALUMOWELD	0.385	261.8	15,930
OPGW	1	INCA8 OPGW	0.457	245.0	11,719
TRANSMISSION COND.	3	795 KCMIL 36/1 ACSR COOT	1.040	803.6	16,800

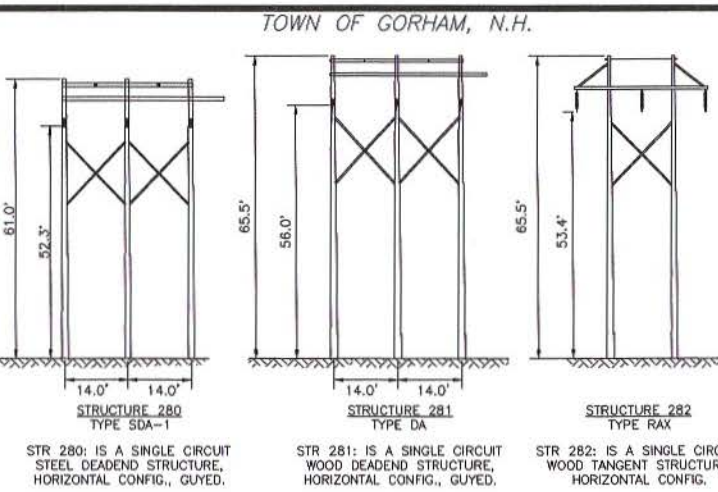
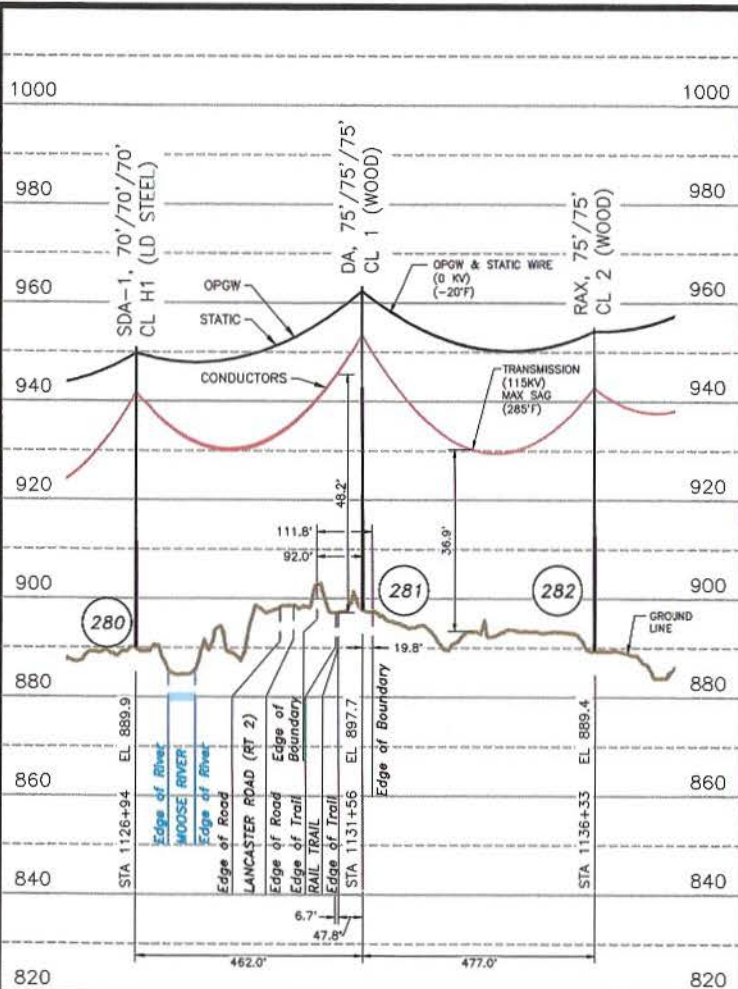
PROFILE LEGEND:



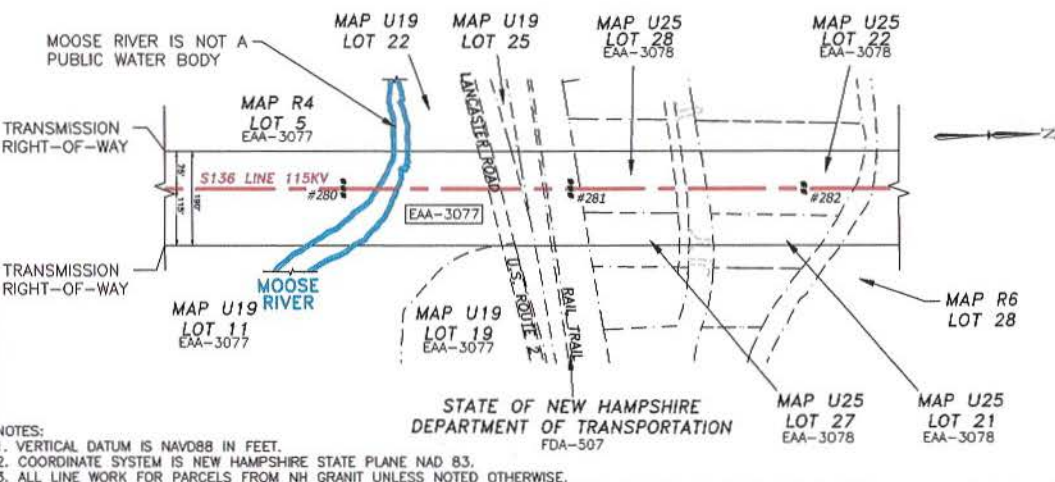
EVERSOURCE ENERGY

LINE S136 115KV TRANSMISSION
STATE LAND CROSSING
GORHAM, N.H.
EXHIBIT #4

ISSUED TO: PWC	DATE: 03/27/20	SAL: GEL	BRS: BRS	SCALE: AS SHOWN	FILE: S13643502.DWG
DWG REV: EPN/DESCRIPTION	CONTR/PER: DATE: DGN: CHD: APPR:	DATE: 08/06/19		DRAWING NO: S13643502	



NESC VERTICAL CLEARANCE (FT) FROM TABLE 232.1	
NATURE OF SURFACE UNDERNEATH WIRES, CONDUCTORS OR CABLES	LINE VOLTAGE (KV)
ROADS, STREETS AND OTHER AREAS SUBJECT TO TRUCK TRAFFIC	20.1
SPACES AND WAYS SUBJECT TO PEDESTRIAN OR RESTRICTED TRAFFIC ONLY	16.1
WATER AREAS NOT SUITABLE FOR SAIL BOATING OR WHERE SAIL BOATING IS PROHIBITED	18.6



NOTES:
 1. VERTICAL DATUM IS NAVD88 IN FEET.
 2. COORDINATE SYSTEM IS NEW HAMPSHIRE STATE PLANE NAD 83.
 3. ALL LINE WORK FOR PARCELS FROM NH GRANIT UNLESS NOTED OTHERWISE.

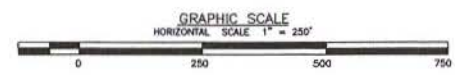
STRUCTURE LOCATION:

- STR. #280 - LAT.= 44°23'55.892"N
LONG.= 71°12'50.888"W
- STR. #281 - LAT.= 44°24'0.450"N
LONG.= 71°12'50.695"W
- STR. #282 - LAT.= 44°24'5.161"N
LONG.= 71°12'50.497"W

CABLE SCHEDULE:

WIRE	# OF CABLES	TYPE	DIA. (IN.)	WEIGHT/1000 FT	CABLE STRENGTH (LBS.)
STATIC	1	7#8 ALUMOWELD	0.385	261.8	15,930
OPGW	1	INCA8 OPGW	0.457	245.0	11,719
TRANSMISSION COND.	3	795 KCMIL 36/1 ACSR COOT	1.040	803.6	16,800

PROFILE LEGEND:



EVERSOURCE ENERGY

LINE S136 115KV TRANSMISSION
STATE LAND CROSSING
GORHAM, N.H.
EXHIBIT #5

DATE: 08/06/19

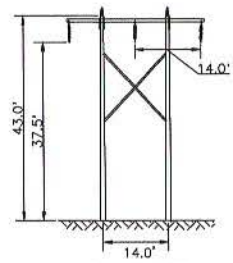
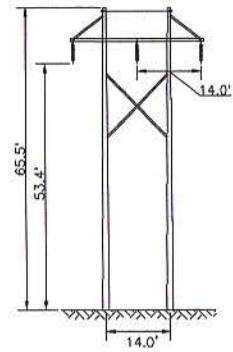
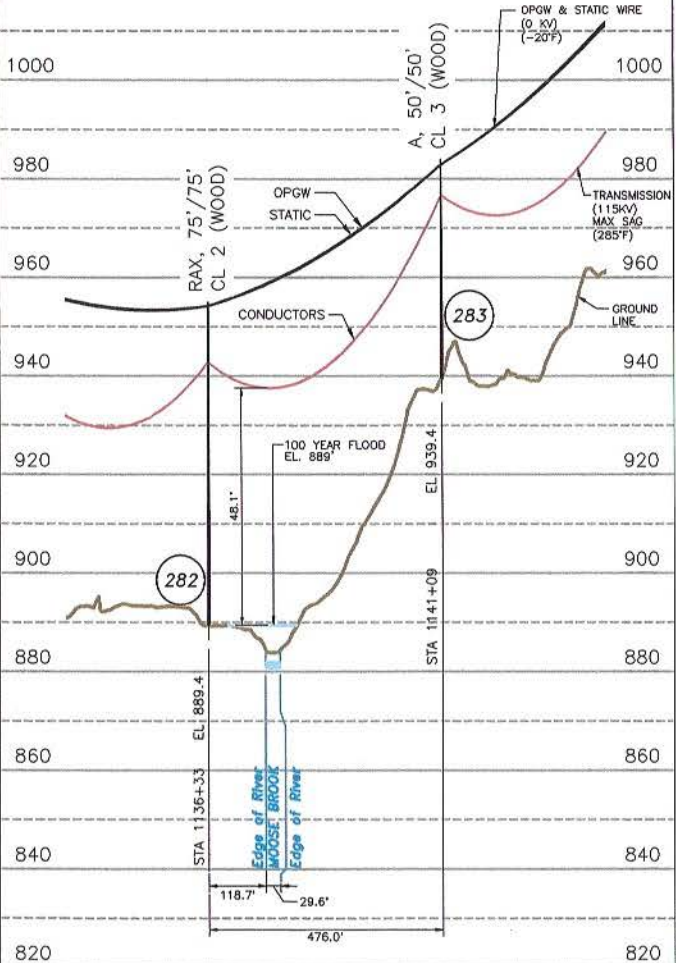
SCALE: AS SHOWN	FILE: S13643501.DWG	DRAWING NO: S13643501
-----------------	---------------------	-----------------------

1	ISSUED TO PUC	08/27/20	DRL	SAL	GEL	
DRG REV	EPW/DESCRIPTION	EQM/PLR	DATE	DRN	CHD	APPR

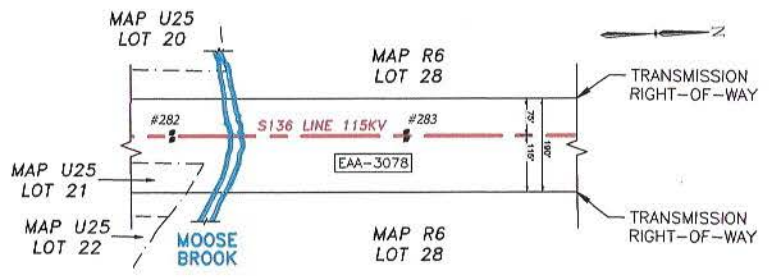
ES VER: 12/2016

3/13/2020 4:27 PM - Skern - C:\Users\skern\OneDrive - ITC\1301411 - Eversource\Line Co...\S13643904.dwg - S13643904

TOWN OF GORHAM, N.H.



NESC VERTICAL CLEARANCE (FT) FROM TABLE 232.1	
NATURE OF SURFACE UNDERNEATH WIRES, CONDUCTORS OR CABLES	LINE VOLTAGE (KV)
ROADS, STREETS AND OTHER AREAS SUBJECT TO TRUCK TRAFFIC	115
SPACES AND WAYS SUBJECT TO PEDESTRIAN OR RESTRICTED TRAFFIC ONLY	20.1
WATER AREAS NOT SUITABLE FOR SAIL BOATING OR WHERE SAIL BOATING IS PROHIBITED	16.1
	18.6



NOTES:
 1. VERTICAL DATUM IS NAVD88 IN FEET.
 2. COORDINATE SYSTEM IS NEW HAMPSHIRE STATE PLANE NAD 83.
 3. ALL LINE WORK FOR PARCELS FROM NH GRANIT UNLESS NOTED OTHERWISE.

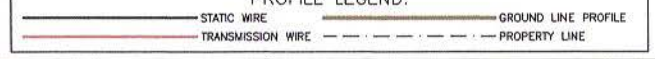
STRUCTURE LOCATION:

STR. #282 - LAT.= 44°24'5.161"N
 LONG.= 71°12'50.497"W
 STR. #283 - LAT.= 44°24'9.855"N
 LONG.= 71°12'50.285"W

CABLE SCHEDULE:

WIRE	# OF CABLES	TYPE	DIA. (IN.)	WEIGHT/1000 FT	CABLE STRENGTH (LBS.)
STATIC	1	7#8 ALUMOWELD	0.385	261.8	15,930
OPGW	1	INCB OPGW	0.457	245.0	11,719
TRANSMISSION COND.	3	795 KCMIL 36/1 ACSR COOT	1.040	803.6	16,800

PROFILE LEGEND:



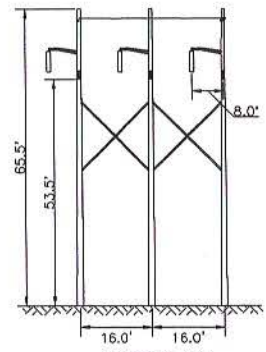
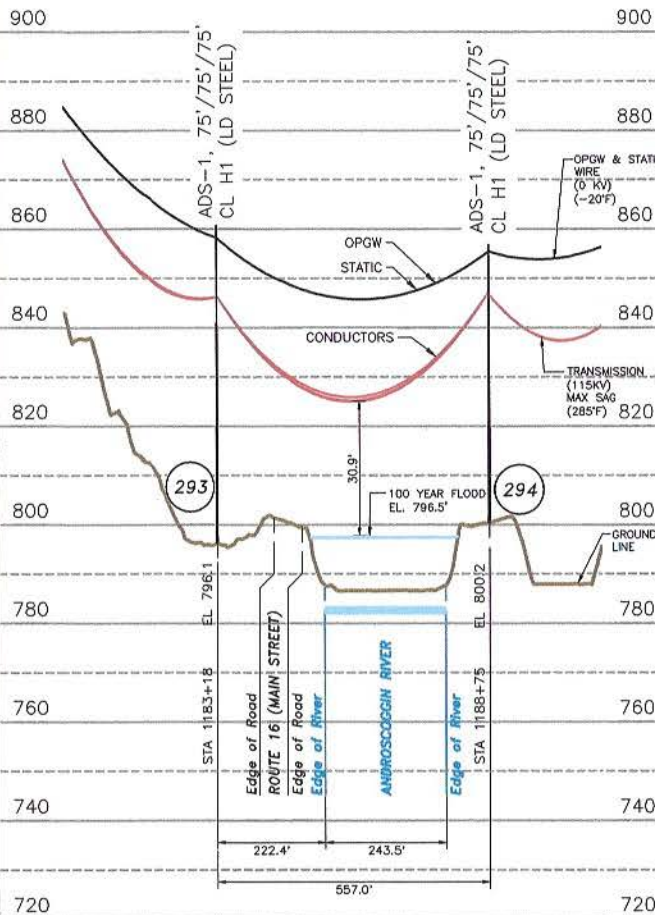
EVERSOURCE ENERGY

LINE S136 115KV TRANSMISSION
 MOOSE BROOK WATERBODY CROSSING
 GORHAM, N.H.
 EXHIBIT #6

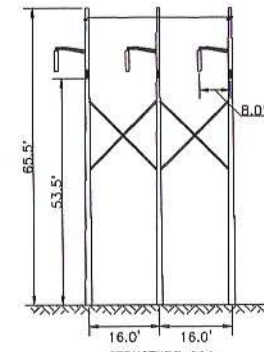
1	ISSUED TO PUC	03/27/20	SAL	GEL	BES
DWG REV	EPN/DESCRIPTION	CONT/REV	DATE	ENR	CHKD

SCALE AS SHOWN
 FILE: S13643904.DWG
 DRAWING NO. S13643904

TOWN OF GORHAM, N.H.

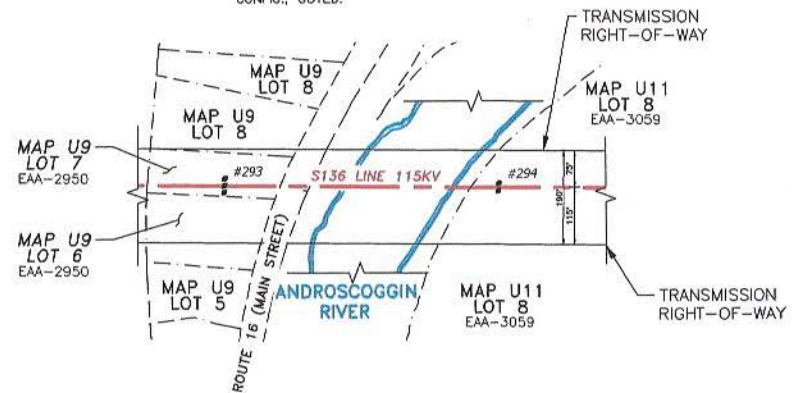


STRUCTURE 293
TYPE ADS-1
STR 293: IS A SINGLE CIRCUIT STEEL DEADEND STRUCTURE, HORIZONTAL CONFIG., GUYED.



STRUCTURE 294
TYPE ADS-1
STR 294: IS A SINGLE CIRCUIT STEEL DEADEND STRUCTURE, HORIZONTAL CONFIG., GUYED.

NESC VERTICAL CLEARANCE (FT) FROM TABLE 232.1	
NATURE OF SURFACE UNDERNEATH WIRES, CONDUCTORS OR CABLES	LINE VOLTAGE (kV)
ROADS, STREETS AND OTHER AREAS SUBJECT TO TRUCK TRAFFIC	115
SPACES AND WAYS SUBJECT TO PEDESTRIAN OR RESTRICTED TRAFFIC ONLY	20.1
WATER AREAS NOT SUITABLE FOR SAIL BOATING OR WHERE SAIL BOATING IS PROHIBITED	16.1
	18.6



- NOTES:
1. VERTICAL DATUM IS NAVD88 IN FEET.
 2. COORDINATE SYSTEM IS NEW HAMPSHIRE STATE PLANE NAD 83.
 3. ALL LINE WORK FOR PARCELS FROM NH GRANIT UNLESS NOTED OTHERWISE.
 4. FLOOD ELEVATION OBTAINED FROM FEMA FLOOD MAP 33007C0981D, EFFECTIVE 02/20/2013.

STRUCTURE LOCATION:

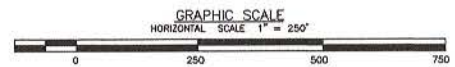
STR. #293 - LAT.= 44°24'16.472"N
LONG.= 71°11'58.839"W

STR. #294 - LAT.= 44°24'16.747"N
LONG.= 71°11'51.179"W

CABLE SCHEDULE:

WIRE	# OF CABLES	TYPE	DIA. (IN.)	WEIGHT/1000 FT	CABLE STRENGTH (LBS.)
STATIC	1	7#8 ALUMOWELD	0.385	261.8	15,930
OPGW	1	INCAB OPGW	0.457	245.0	11,719
TRANSMISSION COND.	3	795 KCMIL 36/1 ACSR COOT	1.040	803.6	16,800

PROFILE LEGEND:



ISSUED TO	PLG	DATE	CHKD	APPR
DWG REV	EPV/DESCRIPTION	CONI/PE#	DATE	SRN

EVERSOURCE ENERGY

**LINE S136 115KV TRANSMISSION
ANDROSCOGGIN RIVER WATERBODY CROSSING
GORHAM, N.H.
EXHIBIT #7**

SCALE AS SHOWN	FILE: S13643903.DWG	DRAWING NO. S13643903
----------------	---------------------	-----------------------

T	I	1
GRAN	SAL/TRC	ENGINEER
GEL/TRC	CHECKED	NEB/TRC
APPROVED	GEL/TRC	DATE
		06/18/19