

## **BEFORE THE NEW HAMPSHIRE PUBLIC UTILITIES COMMISSION**

**Public Service Company of NH d/b/a Eversource Energy and New Hampshire  
Electric Cooperative, Inc.**

**DE 24-101**

**Joint Petition to Alter Their Franchise Area Boundaries in the Town of  
Landaff, New Hampshire**

Technical Statement of  
Katie I. McLaughlin  
NH Department of Energy  
Regulatory Support Division

November 12, 2024

The New Hampshire Department of Energy (“DOE”) has reviewed the joint petition of Public Service Company of New Hampshire d/b/a Eversource Energy (“Eversource”) and the New Hampshire Electric Cooperative, Inc. (“NHEC”) filed on September 12, 2024, with the Public Utilities Commission (“Commission”). This joint petition requested the Commission to issue an order approving a change in the franchise areas served by the two utilities in the Town of Landaff, New Hampshire in order to allow NHEC to provide electric service to a new customer at Tax Lot 3-17, where the lot is currently within the Eversource franchise area. The lot is proposed to be moved from the Eversource franchise area to the NHEC franchise area within the Town of Landaff.

The DOE recommends that the Commission grant the joint petition of Eversource and NHEC to alter the franchise territory in Landaff to allow NHEC to provide service to this lot because it is in the public good.<sup>1</sup> The DOE further recommends that the Commission approve the joint petition through an order *nisi*. The DOE Regulatory Support Division also worked with the DOE Enforcement Division to create a detailed franchise map that accurately records the current boundary and proposed adjustment as shown in Attachment 1.

### **DOE’s Analysis and Recommendation**

On September 12, 2024, Eversource and NHEC filed a joint petition with the Commission to alter their franchise area boundaries in Landaff, New Hampshire to permit NHEC to provide service along Albee Rd to Lot 3-17, as shown in Attachment A of the petition. See Petition (September 12, 2024).

A residence that is proposed to be built on Lot 3-17 on Albee Rd in the Town of Landaff is closer to electric distribution facilities owned and operated by NHEC than to any such facilities owned and operated by Eversource. The cost for Eversource to extend service to Lot 3-17 would be

---

<sup>1</sup> Pursuant to RSA 374:26, the Commission shall grant such permission to alter a franchise territory when it is in the public good to do so; and pursuant to RSA 374:22, Eversource is required to obtain the Commission’s permission and approval to alter its franchise. As the utilities noted in the joint petition, RSA 374:22 does not apply to NHEC pursuant to RSA 362:2.

significantly greater than the cost for NHEC to extend service to that parcel.<sup>2</sup> NHEC already provides electric service to customers on Albee Rd, including to the adjacent property owners at Lots 3-18 and 3-19. The majority of the Lot 3-17 parcel is currently located within the Eversource franchise area in the Town. NHEC may provide service to Lot 3-17 property with less construction and at a lower cost than Eversource.

Eversource and NHEC request approval to adjust their respective franchise areas in the Town of Landaff in order to accommodate the new customer's service request, which the petitioners state are "all consistent with the public interest."<sup>3</sup> Eversource and NHEC propose to adjust the franchise boundary lines as shown in Attachment A of the petition to reflect the updates to service to accommodate Lot 3-17.

From Eversource's closest distribution line to Lot 3-17, Eversource estimates that a line extension would be approximately 950 feet while a line extension to Lot 3-17 from the closest NHEC distribution line would be approximately 575 feet.<sup>4</sup> Eversource provided an estimated cost which would be billed to the customer of \$20,319.00. This cost estimate does not include any necessary vegetation trimming costs the Company would be impacted with, which Eversource estimates would be significant. NHEC's estimated cost to the customer would be \$12,014.19.

The customer prefers the franchise boundary adjustment and has provided a statement saying such.<sup>5</sup> Based on the customer's preference for the franchise boundary adjustment, the lower cost to extend the NHEC line, and the fact that both utilities and the customer are in support of the adjustment, the DOE concludes that the franchise area boundary adjustment is in the public good. The DOE further recommends that approval be granted through an order *nisi*.

---

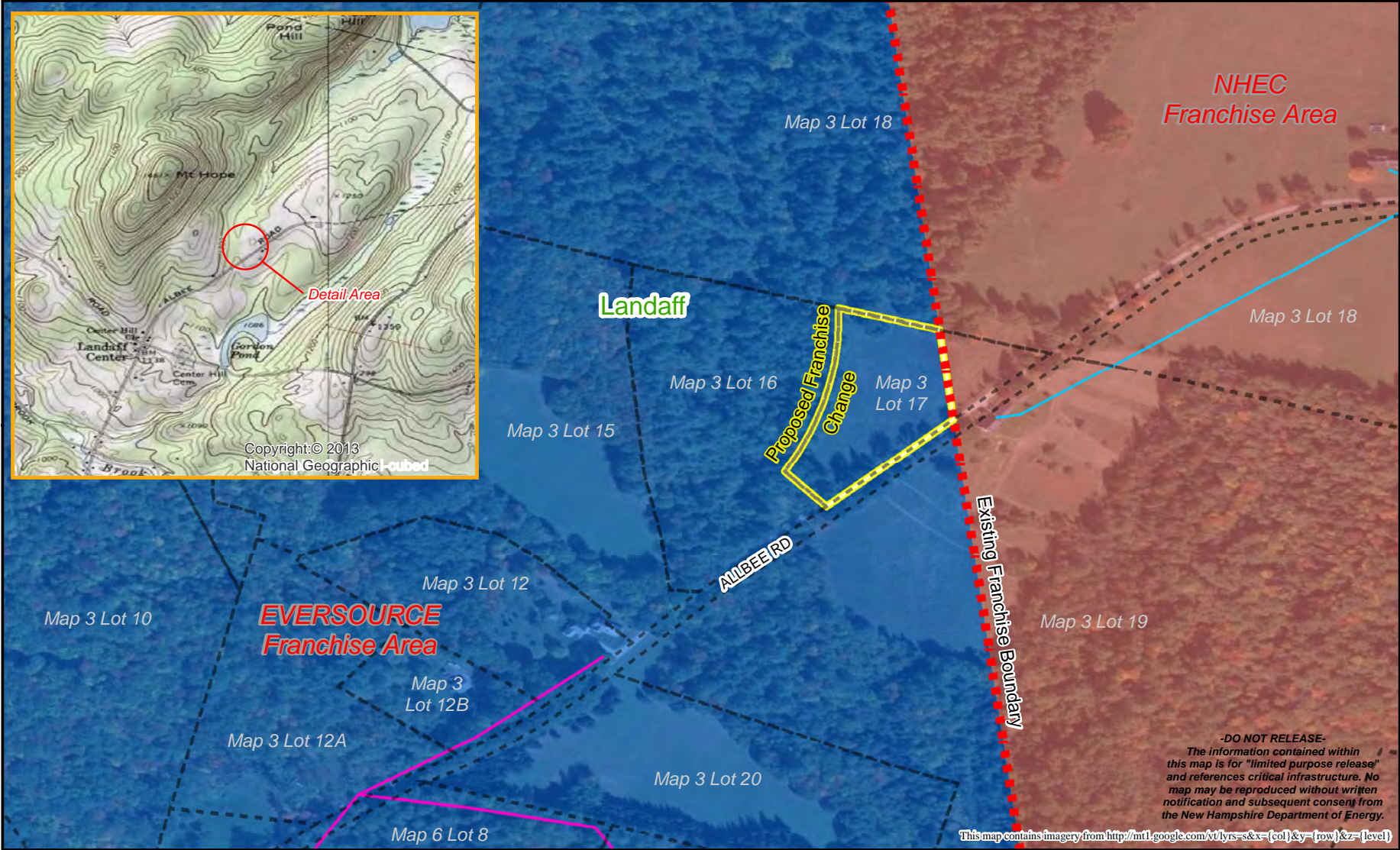
<sup>2</sup> See Docket No. DE 24-101, Tab 8, Attachment

<sup>3</sup> See Docket No. DE 24-101, Tab 1, Petition at p.2 para. 2

<sup>4</sup> See Docket No. DE 24-101, Tab 8, Attachment

<sup>5</sup> See Docket No. DE 24-101, Tab 8, Attachment

# DE 24-101 Proposed Franchise Change - NHEC / EVERSOURCE



<p><span style="color: pink;">—</span> Eversource Electric Lines</p> <p><span style="color: cyan;">—</span> NHEC Electric Lines</p>	<p><span style="color: red;">- - - -</span> Existing Franchise Boundary</p> <p><span style="color: yellow;">- - - -</span> DE 24-101 Proposed Change</p>
---	--



Prepared by:  
 NH Department of Energy  
 Enforcement Division

